

gebo[®]
INO^x





INOX GRIP S Unión en acero inoxidable con junta labial y anillo de fijación, especialmente indicada para tuberías de PE, PP (PPR) y PVC. (En tubería de PE, colocar casquillo.)

INOX GRIP L Esta unión tiene las mismas características que la INOX UNIÓN S, pero da aún más seguridad por su longitud.

Páginas 146–149



INOX FLEX S/INOX FLEX L

Unión sin anillo de agarre. Apta para compensar dilataciones y absorber vibraciones.

Páginas 150–153



INOX REP S

Abrazadera de cierre de una banda (mediante bisagra), para reparación y unión de todo tipo de tuberías.

Páginas 154–155



INOX REP D

Abrazadera de reparación con sistema doble banda. Para reparar todo tipo de tuberías, en diámetros grandes.

Páginas 156–158



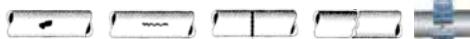
INOX REP C/INOX REP E

Abrazadera de reparación para curva de soldar (INOX REP C) y abrazadera de reparación para codo de unión (INOX REP E).

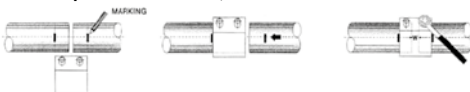
Páginas 159–162

Aplicaciones:

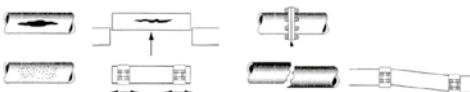
- Modelos para reparar: REP S, REP D



- Modelos para unir: GRIP S + L, FLEX S + L



- Modelos para reemplazar parcialmente: GRIP S, FLEX S



Características:



ORBE
VIBRACIONES



ABSORBE
DILATACIONES



RESISTENTE AL
RUSTO

Información técnica GEBOinox, acoplamientos de alta presión:

GEBO INOX GRIP y INOX FLEX:

- Apta para una instalación duradera
- Resistente a la tracción y los estiramientos (solo INOX GRIP)
- Compensa curvas y desplazamientos
- Para unir tubos iguales o diferentes
- Resistente a la carga axial
- Ahorro de tiempo y espacio en la instalación
- Resistentes a las vibraciones y con suspensión de ruidos

GEBO INOX REP:

- Para la reparación y unión de tubería. Sistema de cierre doble (INOX REP D) y de una banda mediante bisagra (INOX REP S).
- Para la reparación de una curva de acero soldada INOX REP C y para la reparación de codos de unión INOX REP E.

Materiales INOX GRIP, FLEX y REP:

- **Cuerpo:** AISI 304/316 ①
- **Banda deslizante:** AISI 304/316 ②
- **Tornillos:** AISI 304/316/S45C/SUS XM7 SCM435 GALV' ③
- **Pernos:** AISI 303F/316/S45C GALV' ④
- **Eje de sujeción:** AISI 303F/316/S45C GALV' ⑤
- **Anillo de fijación:** AISI 304H ⑥
- **Junta de goma:** EPDM, sobre demanda NBR o FPM ⑦



Junta de goma – Características:

- **EPDM:** Envejecimiento, ozon, resistencia eléctrica;
Temperatura: -30 hasta 130 °C;
Uso: Agua caliente y fría, aire, polvo, líneas de productos químicos (hidróxido de amonio, alcohol metílico, ácido graso, hidrógeno brom, acético, líneas de acetona, PH 2-11)
- **NBR:** Petróleo, abrasión, resistencia al envejecimiento;
Temperatura: -25 hasta 100 °C;
Uso: Petróleo, gas, agua, otros hidrocarburos (gasolina, oxígeno, combustible, líneas de aceite de oliva, etc., PH 2-11)
- **Silicona:** Calor, resistencia a la intemperie;
Temperatura: -70 hasta 220 °C;
Uso: Líneas de vapor
- **FKM/FPM:** Química, medicina; Temperatura: -30 hasta 250 °C;
Uso: Líneas químicas (toluene, ácido sulfúrico, ácido fluorhídrico, benceno, heptano, agua regia, líneas de aceite lubricante, etc.)

Fluidos:



- Agua; Aire comprimido; Otros fluidos: consultar



- **Junta estándar:** EPDM
- **Medio:** Aire comprimido, agua (otros fluidos consultar)
- **Temperatura:** -30° hasta 130 °C (para más temperatura consultar)
- **Distancia entre los tubos (W):**

| | |
|-------------|---------|
| DN 15-65 | 0-8 mm |
| DN 80 y más | 0-15 mm |
- **Desviación angular:**

| | |
|--------------|----|
| DN 15-50 | 5° |
| DN 65-175 | 4° |
| DN 200 y más | 2° |

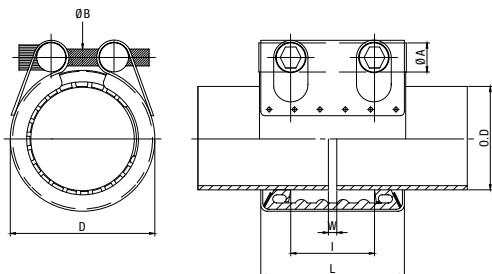
| Código artículo | DN | Ø exterior tubo [mm] | D [mm] | Tolerancia [mm] | Presión de trabajo [bar] | | Longitud [mm] | | Giro tornillos [Nm] | Rosca perno | |
|---------------------|----|----------------------|--------------|-----------------|---|---|---------------|-----|---------------------|-------------|------|
| | | | | |  |  | L | I | | | |
| Longitud 60 | | | | | | | | | | | |
| | | 15 | 20,0 | 33,5 | 19,5-20,5 | 16 | 32 | 60 | 28 | 7 | M 6 |
| X | | | 21,7 | 35,5 | 21,2-22,2 | 16 | 32 | 60 | 28 | 7 | M 6 |
| | | 20 | 25,0 | 38,5 | 24,5-25,5 | 16 | 32 | 60 | 28 | 8 | M 8 |
| X | | | 27,2 | 41,0 | 26,7-27,7 | 16 | 32 | 60 | 28 | 8 | M 8 |
| | | | 28,2 | 41,5 | 27,5-29,0 | 16 | 32 | 60 | 28 | 8 | M 8 |
| X | | 25 | 30,0 | 43,5 | 29,5-30,5 | 16 | 32 | 60 | 28 | 8 | M 8 |
| X | | | 32,0 | 45,5 | 31,5-32,5 | 16 | 32 | 60 | 28 | 8 | M 8 |
| | | | 34,0 | 47,0 | 33,0-34,6 | 16 | 32 | 60 | 28 | 8 | M 8 |
| X | | 32 | 38,0 | 51,5 | 37,5-38,5 | 16 | 32 | 60 | 28 | 15 | M 8 |
| X | | | 40,0 | 53,5 | 39,5-41,5 | 16 | 32 | 60 | 28 | 15 | M 8 |
| X | | | 42,7 | 56,0 | 41,9-43,0 | 16 | 32 | 60 | 28 | 15 | M 8 |
| | | | 44,5 | 58,0 | 44,0-45,0 | 16 | 32 | 60 | 28 | 15 | M 8 |
| X | | 40 | 48,6 | 62,0 | 47,8-49,0 | 16 | 32 | 60 | 28 | 15 | M 8 |
| X | | | 50,8 | 64,5 | 49,5-51,5 | 16 | 32 | 60 | 28 | 15 | M 8 |
| Longitud 80 | | | | | | | | | | | |
| | | 50 | 54,0 | 69,6 | 53,4-54,6 | 16 | 32 | 80 | 44 | 18 | M 8 |
| X | | | 57,0 | 72,6 | 56,4-57,6 | 16 | 32 | 80 | 44 | 18 | M 8 |
| X | | | 60,5 | 76,0 | 59,0-61,5 | 16 | 32 | 80 | 44 | 18 | M 8 |
| X | | | 63,0 | 78,6 | 62,4-63,6 | 16 | 32 | 80 | 44 | 18 | M 8 |
| | | 65 | 66,7 | 82,3 | 65,2-67,3 | 14 | 28 | 80 | 44 | 18 | M 8 |
| | | | 69,0 | 84,6 | 68,0-70,1 | 14 | 28 | 80 | 44 | 18 | M 8 |
| X | | | 73,0 | 88,6 | 71,5-74,1 | 14 | 28 | 80 | 44 | 18 | M 8 |
| X | | | 76,3 | 92,0 | 75,0-77,2 | 14 | 28 | 80 | 44 | 18 | M 8 |
| Longitud 110 | | | | | | | | | | | |
| | | 80 | 79,9 | 101,0 | 78,8-80,8 | 14 | 28 | 110 | 59 | 35 | M 12 |
| | | | 84,0 | 105,0 | 83,0-84,9 | 14 | 28 | 110 | 59 | 35 | M 12 |
| X | | | 89,1 | 110,0 | 87,8-91,0 | 14 | 28 | 110 | 59 | 35 | M 12 |
| | | 90 | 101,6 | 123,0 | 100,4-102,6 | 14 | 28 | 110 | 59 | 35 | M 12 |
| | | 100 | 104,0 | 125,0 | 103,0-104,8 | 14 | 28 | 110 | 59 | 35 | M 12 |
| X | | | 106,3 | 127,5 | 105,0-107,4 | 14 | 28 | 110 | 59 | 35 | M 12 |
| X | | | 108,0 | 129,0 | 106,5-108,5 | 14 | 28 | 110 | 59 | 35 | M 12 |
| X | | | 110,0 | 131,0 | 109,0-111,0 | 14 | 28 | 110 | 59 | 35 | M 12 |
| X | | | 114,3 | 135,0 | 113,2-115,4 | 14 | 28 | 110 | 59 | 35 | M 12 |
| | | 125 | 127,0 | 149,0 | 125,6-128,4 | 14 | 28 | 111 | 59 | 45 | M 12 |
| | | | 129,0 | 151,0 | 127,5-130,0 | 14 | 28 | 111 | 59 | 45 | M 12 |
| | | | 133,0 | 155,0 | 131,6-134,4 | 14 | 28 | 111 | 59 | 45 | M 12 |
| X | | | 139,8 | 162,0 | 137,7-140,9 | 14 | 28 | 111 | 59 | 45 | M 12 |
| | | | 141,3 | 163,3 | 139,7-142,5 | 14 | 28 | 111 | 59 | 45 | M 12 |
| X | | 150 | 154,0 | 176,0 | 151,5-155,0 | 12 | 24 | 111 | 59 | 45 | M 12 |
| X | | | 159,0 | 181,0 | 156,5-160,0 | 12 | 24 | 111 | 59 | 45 | M 12 |
| | | | 165,2 | 187,0 | 163,3-166,7 | 12 | 24 | 111 | 59 | 45 | M 12 |
| X | | | 168,3 | 190,3 | 166,6-170,0 | 12 | 24 | 111 | 59 | 45 | M 12 |
| | | 175 | 180,0 | 202,0 | 178,0-182,0 | 10 | 20 | 111 | 59 | 45 | M 12 |
| Longitud 150 | | | | | | | | | | | |
| | | 200 | 200,0 | 226,6 | 196,2-201,5 | 8 | 16 | 150 | 89 | 70 | M 14 |
| | | | 204,0 | 230,6 | 202,7-206,7 | 8 | 16 | 150 | 89 | 70 | M 14 |
| | | | 216,3 | 243,0 | 214,5-218,3 | 8 | 16 | 150 | 89 | 70 | M 14 |
| X | | | 219,1 | 245,7 | 217,0-221,0 | 8 | 16 | 150 | 89 | 70 | M 14 |
| X | | | 225,0 | 251,6 | 223,0-227,0 | 8 | 16 | 150 | 89 | 70 | M 14 |
| | | 250 | 254,0 | 280,6 | 251,4-256,6 | 8 | 16 | 150 | 89 | 70 | M 14 |
| | | | 267,4 | 294,0 | 264,8-270,0 | 8 | 16 | 150 | 89 | 70 | M 14 |
| | | | 273,1 | 299,7 | 270,4-275,6 | 8 | 16 | 150 | 89 | 70 | M 14 |
| | | 300 | 304,0 | 330,6 | 301,5-306,6 | 7 | 14 | 150 | 89 | 70 | M 14 |
| | | | 318,5 | 345,0 | 316,0-322,0 | 7 | 14 | 150 | 89 | 70 | M 14 |
| | | | 323,9 | 350,5 | 321,0-327,4 | 7 | 14 | 150 | 89 | 70 | M 14 |
| | | 350 | 355,6 | 382,2 | 352,0-360,0 | 7 | 14 | 150 | 89 | 70 | M 14 |

INOX acoplamientos de alta presión



INOX GRIP S Con anillo de fijación

Medidas:



Instrucciones de Montaje: Inox Grip S y Grip L / Inox Flex S y Flex L:

Montaje:

1. Comprobar que coincida la medida de la unión y el diámetro exterior del tubo.
2. Limpiar los finales de los tubos de suciedad, oxido y pintura.
3. Rebajar rebaba del extremo del tubo cortado.
4. Marcar la profundidad de la introducción en el tubo (mitad de la longitud de la unión).
5. Introducir el final del tubo hasta la señal marcada.
6. Comprobar que los tubos y la unión estén bien asentados.
7. Apretar los pernos con una llave dinamométrica o llave allen **uniformemente**.
¡Atención: Tener en cuenta el momento de giro indicado!
8. Después de 15 minutos volver a apretar los pernos con el momento de giro indicado.





- **Junta estándar:** EPDM
- **Medio:** Aire comprimido, agua (otros fluidos consultar)
- **Temperatura:** -30° hasta 130 °C (para más temperatura consultar)
- **Distancia entre los tubos (W):**

| | |
|-------------|---------|
| DN 15-65 | 0-8 mm |
| DN 80 y más | 0-15 mm |
- **Desviación angular:**

| | |
|--------------|----|
| DN 15-50 | 5° |
| DN 65-175 | 4° |
| DN 200 y más | 2° |

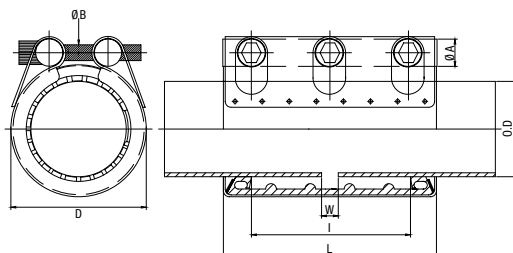
| Código artículo | DN | Ø exterior tubo [mm] | D [mm] | Tolerancia [mm] | Presión de trabajo [bar] | Longitud [mm] | | Giro tornillos [Nm] | Rosca perno |
|---------------------|-----|----------------------|--------|-----------------|--------------------------|---------------|-----|---------------------|-------------|
| | | | | | | L | I | | |
| Longitud 100 | | | | | | | | | |
| | 15 | 20,0 | 33,5 | 19,5-20,5 | 16 32 | 100 | 70 | 7 | M 6 |
| | | 21,7 | 35,5 | 21,2-22,2 | 16 32 | 100 | 70 | 7 | M 6 |
| | 20 | 25,0 | 38,5 | 24,5-25,5 | 16 32 | 100 | 70 | 7 | M 6 |
| | | 27,2 | 41,0 | 26,7-27,7 | 16 32 | 100 | 70 | 7 | M 6 |
| X | 25 | 32,0 | 45,5 | 31,5-32,5 | 16 32 | 100 | 70 | 7 | M 6 |
| | | 34,0 | 47,0 | 33,0-34,6 | 16 32 | 100 | 70 | 7 | M 6 |
| X | 32 | 40,0 | 53,5 | 39,5-41,5 | 16 32 | 100 | 70 | 7 | M 6 |
| X | | 42,7 | 56,0 | 41,9-43,0 | 16 32 | 100 | 70 | 7 | M 6 |
| | 40 | 48,6 | 62,0 | 47,8-49,0 | 16 32 | 100 | 70 | 7 | M 6 |
| X | | 50,8 | 64,5 | 49,5-51,5 | 16 32 | 100 | 70 | 7 | M 6 |
| Longitud 150 | | | | | | | | | |
| | 50 | 60,5 | 76,0 | 59,0-61,5 | 16 32 | 150 | 110 | 18 | M 8 |
| X | | 63,0 | 78,6 | 62,4-63,6 | 16 32 | 150 | 110 | 18 | M 8 |
| | 65 | 69,0 | 84,6 | 68,0-70,1 | 14 28 | 150 | 110 | 18 | M 8 |
| | | 73,0 | 88,6 | 71,5-74,1 | 14 28 | 150 | 110 | 18 | M 8 |
| X | | 76,3 | 92,0 | 75,0-77,2 | 14 28 | 150 | 110 | 18 | M 8 |
| Longitud 200 | | | | | | | | | |
| X | 80 | 89,1 | 110,0 | 87,8-91,0 | 14 28 | 200 | 150 | 35 | M 12 |
| | 90 | 101,6 | 123,0 | 100,4-102,6 | 14 28 | 200 | 150 | 35 | M 12 |
| | 100 | 104,0 | 125,0 | 103,0-104,8 | 14 28 | 200 | 150 | 35 | M 12 |
| | | 106,3 | 127,5 | 105,0-107,4 | 14 28 | 200 | 150 | 35 | M 12 |
| | | 108,0 | 129,0 | 106,5-108,5 | 14 28 | 200 | 150 | 35 | M 12 |
| X | | 110,0 | 131,0 | 109,0-111,0 | 14 28 | 200 | 150 | 35 | M 12 |
| | | 114,3 | 135,0 | 113,2-115,4 | 14 28 | 200 | 150 | 35 | M 12 |
| | 125 | 139,8 | 162,0 | 137,7-140,9 | 14 28 | 200 | 150 | 45 | M 12 |
| X | 150 | 159,0 | 181,0 | 156,5-160,0 | 12 24 | 201 | 150 | 45 | M 12 |
| X | | 165,2 | 187,0 | 163,3-166,7 | 12 24 | 201 | 150 | 45 | M 12 |
| | | 168,3 | 190,3 | 166,6-170,0 | 12 24 | 201 | 150 | 45 | M 12 |
| Longitud 250 | | | | | | | | | |
| | 200 | 216,3 | 243,0 | 214,5-218,3 | 8 16 | 250 | 185 | 70 | M 16 |
| X | | 219,1 | 245,7 | 217,0-221,0 | 8 16 | 250 | 185 | 70 | M 16 |
| X | | 225,0 | 251,6 | 223,0-227,0 | 14 28 | 200 | 150 | 35 | M 16 |
| | 250 | 267,4 | 294,0 | 264,8-270,0 | 8 16 | 250 | 185 | 70 | M 16 |
| | | 273,1 | 299,7 | 270,4-275,6 | 8 16 | 250 | 185 | 70 | M 16 |
| | 300 | 318,5 | 345,0 | 316,0-322,0 | 7 14 | 250 | 185 | 70 | M 16 |
| | | 323,9 | 350,5 | 321,0-327,4 | 7 14 | 250 | 185 | 70 | M 16 |
| | 350 | 355,6 | 382,2 | 352,0-360,0 | 7 14 | 250 | 185 | 70 | M 16 |

INOX acoplamientos de alta presión



INOX GRIP L Con anillo de fijación

Medidas:



INOX FLEX S



- Junta estándar: EPDM
- Medio: Aire comprimido, agua (otros fluidos consultar)
- Temperatura: -30° hasta 130 °C (para más temperatura consultar)
- Movimiento axial máximo:

| | |
|--------------|-------|
| DN 15-150 | 5 mm |
| DN 175-500 | 10 mm |
| DN 550 y más | 15 mm |

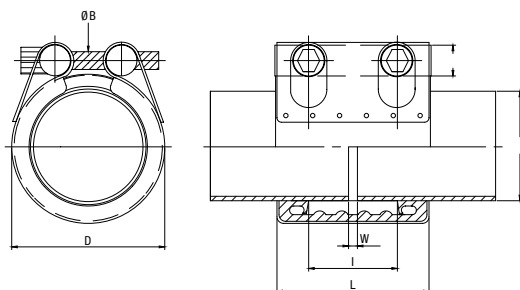
| Código artículo | DN | Ø exterior tubo [mm] | D [mm] | Tolerancia [mm] | Presión de trabajo [bar] | | Longitud [mm] | | Giro tornillos [Nm] | Rosca perno |
|---------------------|-----|----------------------|--------|-----------------|--------------------------|-----|---------------|----|---------------------|-------------|
| | | | | | L | I | | | | |
| Longitud 60 | | | | | | | | | | |
| 65.05.019020.06 | 15 | 20,0 | 30,0 | 19,5-20,5 | 16 | 32 | 60 | 28 | 7 | M 6 |
| 65.05.021022.06 | | 21,7 | 31,7 | 21,0-22,0 | 16 | 32 | 60 | 28 | 7 | M 6 |
| 65.05.024026.06 | 20 | 25,0 | 37,6 | 24,0-26,0 | 16 | 32 | 60 | 28 | 7 | M 8 |
| 65.05.026028.06 | | 27,2 | 39,8 | 26,0-28,0 | 16 | 32 | 60 | 28 | 7 | M 8 |
| 65.05.026029.06 | | 28,2 | 40,8 | 26,4-29,0 | 16 | 32 | 60 | 28 | 7 | M 8 |
| 65.05.029031.06 | 25 | 30,0 | 42,6 | 29,0-31,0 | 16 | 32 | 60 | 28 | 7 | M 8 |
| 65.05.031033.06 | | 32,0 | 44,6 | 31,0-33,0 | 16 | 32 | 60 | 28 | 7 | M 8 |
| 65.05.033035.06 | | 34,0 | 46,6 | 33,0-35,0 | 16 | 32 | 60 | 28 | 7 | M 8 |
| X 65.05.037039.06 | 32 | 38,0 | 50,6 | 37,0-39,0 | 16 | 32 | 60 | 28 | 7 | M 8 |
| 65.05.039041.06 | | 40,0 | 52,6 | 39,5-41,3 | 16 | 32 | 60 | 28 | 7 | M 8 |
| X 65.05.042044.06 | | 42,7 | 55,3 | 42,0-44,0 | 16 | 32 | 60 | 28 | 7 | M 8 |
| X 65.05.044046.06 | | 44,5 | 57,1 | 44,0-46,0 | 16 | 32 | 60 | 28 | 7 | M 8 |
| X 65.05.047049.06 | 40 | 48,6 | 61,2 | 47,5-49,5 | 16 | 32 | 60 | 28 | 7 | M 8 |
| X 65.05.049051.06 | | 50,8 | 63,4 | 49,2-51,5 | 16 | 32 | 60 | 28 | 7 | M 8 |
| Longitud 80 | | | | | | | | | | |
| X 65.05.053055.08 | 50 | 54,0 | 69,0 | 53,0-55,0 | 16 | 32 | 80 | 44 | 12 | M 8 |
| X 65.05.056058.08 | | 57,0 | 72,0 | 56,0-58,0 | 16 | 32 | 80 | 44 | 12 | M 8 |
| X 65.05.059061.08 | | 60,5 | 75,5 | 59,0-61,5 | 16 | 32 | 80 | 44 | 12 | M 8 |
| X 65.05.062064.08 | | 63,0 | 78,0 | 62,0-64,0 | 16 | 32 | 80 | 44 | 12 | M 8 |
| 65.05.065068.08 | 65 | 66,7 | 81,7 | 65,4-68,3 | 14 | 28 | 80 | 44 | - | M - |
| 65.05.068071.08 | | 69,0 | 84,0 | 68,5-71,0 | 14 | 28 | 80 | 44 | 12 | M 8 |
| X 65.05.072075.08 | | 73,0 | 88,0 | 72,5-75,5 | 14 | 28 | 80 | 44 | 12 | M 8 |
| X 65.05.075078.08 | | 76,3 | 91,3 | 75,0-78,0 | 14 | 28 | 80 | 44 | 12 | M 8 |
| Longitud 110 | | | | | | | | | | |
| 65.05.078082.11 | 80 | 79,9 | 98,9 | 78,8-82,0 | 14 | 28 | 110 | 59 | 15 | M 12 |
| 65.05.082085.11 | | 84,0 | 103,0 | 82,5-85,5 | 14 | 28 | 110 | 59 | 15 | M 12 |
| 65.05.089091.11 | | 89,1 | 108,0 | 89,0-91,0 | 14 | 28 | 110 | 59 | 15 | M 12 |
| X 65.05.100103.11 | 90 | 101,6 | 121,0 | 100,0-103,0 | 14 | 28 | 110 | 59 | 15 | M 12 |
| 65.05.102105.11 | 100 | 104,0 | 123,0 | 102,0-105,0 | 14 | 28 | 110 | 59 | 15 | M 12 |
| 65.05.105107.11 | | 106,3 | 125,3 | 105,0-107,5 | 14 | 28 | 110 | 59 | 15 | M 12 |
| 65.05.106109.11 | | 108,0 | 127,0 | 106,0-109,0 | 14 | 28 | 110 | 59 | 15 | M 12 |
| 65.05.108111.11 | | 110,0 | 131,0 | 108,5-111,5 | 14 | 28 | 110 | 59 | 15 | M 12 |
| 65.05.113118.11 | | 114,3 | 133,0 | 113,0-118,0 | 14 | 28 | 110 | 59 | 15 | M 12 |
| 65.05.125129.11 | 125 | 127,0 | 147,0 | 125,0-129,0 | 14 | 28 | 111 | 59 | 25 | M 12 |
| 65.05.127130.11 | | 129,0 | 149,0 | 127,5-130,0 | 14 | 28 | 111 | 59 | 25 | M 12 |
| 65.05.131135.11 | | 133,0 | 153,0 | 131,0-135,0 | 14 | 28 | 111 | 59 | 25 | M 12 |
| X 65.05.138142.11 | | 139,8 | 160,0 | 138,0-142,0 | 14 | 28 | 111 | 59 | 25 | M 12 |
| 65.05.139143.11 | | 141,3 | 161,3 | 139,5-143,5 | 14 | 28 | 111 | 59 | 25 | M 12 |
| 65.05.151155.11 | 150 | 154,0 | 174,0 | 151,5-155,5 | 12 | 24 | 111 | 59 | 25 | M 12 |
| 65.05.156160.11 | | 159,0 | 179,0 | 156,0-160,0 | 12 | 24 | 111 | 59 | 25 | M 12 |
| 65.05.164167.11 | | 165,2 | 185,0 | 164,0-167,0 | 12 | 24 | 111 | 59 | 25 | M 12 |
| 65.05.166170.11 | | 168,3 | 188,0 | 166,0-170,0 | 12 | 24 | 111 | 59 | 25 | M 12 |
| 65.05.178182.11 | 175 | 180,0 | 200,0 | 178,0-182,0 | 10 | 20 | 111 | 59 | 30 | M 12 |
| Longitud 150 | | | | | | | | | | |
| 65.05.196203.15 | 200 | 200,0 | 224,5 | 196,0-203,0 | 8 | 16 | 150 | 89 | 35 | M 14 |
| 65.05.202206.15 | | 204,0 | 228,5 | 202,0-206,0 | 8 | 16 | 150 | 89 | 35 | M 14 |
| 65.05.214218.15 | | 216,3 | 240,0 | 214,0-218,5 | 8 | 16 | 150 | 89 | 35 | M 14 |
| 65.05.216221.15 | | 219,1 | 243,6 | 216,5-221,5 | 8 | 16 | 150 | 89 | 35 | M 14 |
| X 65.05.223227.15 | | 225,0 | 249,5 | 223,0-227,0 | 8 | 16 | 150 | 89 | 35 | M 14 |
| 65.05.251257.15 | 250 | 254,0 | 278,5 | 251,0-257,0 | 8 | 16 | 150 | 89 | 35 | M 14 |
| 65.05.262269.15 | | 267,4 | 292,0 | 262,0-269,0 | 8 | 16 | 150 | 89 | 35 | M 14 |
| 65.05.270276.15 | | 273,1 | 297,6 | 270,0-276,0 | 8 | 16 | 150 | 89 | 35 | M 14 |
| 65.05.301308.15 | 300 | 304,0 | 328,5 | 301,5-308,0 | 7 | 14 | 150 | 89 | 35 | M 14 |
| 65.05.316322.15 | | 318,5 | 343,0 | 316,0-322,5 | 7 | 14 | 150 | 89 | 35 | M 14 |
| 65.05.322328.15 | | 323,9 | 348,4 | 322,0-328,0 | 7 | 14 | 150 | 89 | 35 | M 14 |
| 65.05.352360.15 | 350 | 355,6 | 380,0 | 352,0-360,0 | 7 | 14 | 150 | 89 | 75 | M 14 |
| 65.05.402410.15 | 400 | 406,4 | 431,0 | 402,0-410,0 | 6 | 12 | 150 | 89 | 75 | M 14 |
| 65.05.453460.15 | 450 | 457,2 | 481,0 | 453,0-460,0 | 6 | 12 | 150 | 89 | 90 | M 14 |
| 65.05.504512.15 | 500 | 508,0 | 532,0 | 504,0-512,0 | 5 | 10 | 150 | 89 | 90 | M 14 |
| 65.05.555563.15 | 550 | 558,8 | 583,0 | 555,0-563,0 | 4,6 | 9,2 | 150 | 89 | 90 | M 14 |
| 65.05.605614.15 | 600 | 609,6 | 634,0 | 605,0-614,0 | 4,2 | 8,4 | 150 | 89 | 90 | M 14 |

INOX acoplamientos de alta presión



INOX FLEX S

Medidas:



INOX FLEX L

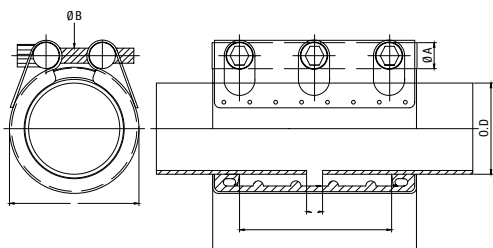


- Junta estándar: EPDM
- Medio: Aire comprimido, agua (otros fluidos consultar)
- Temperatura: -30° hasta 130°C (para más temperatura consultar)
- Movimiento axial máximo:

| | |
|--------------|-------|
| DN 15–150 | 5 mm |
| DN 175–500 | 10 mm |
| DN 550 y más | 15 mm |

| Código artículo | DN | Ø exterior tubo [mm] | D [mm] | Tolerancia [mm] | Presión de trabajo [bar] | | Longitud [mm] | | Giro tor- nillos [Nm] | Giro Rosca perno |
|---------------------|-----|----------------------|--------|-----------------|--------------------------|-----|---------------|-----|--------------------------|------------------|
| | | | | | | | L | I | | |
| Longitud 100 | | | | | | | | | | |
| | 15 | 20,0 | 30,0 | 19,5–20,5 | 16 | 32 | 100 | 70 | 7 | M 6 |
| | | 21,7 | 31,7 | 21,0–22,0 | 16 | 32 | 100 | 70 | 7 | M 6 |
| | 20 | 25,0 | 37,6 | 24,0–26,0 | 16 | 32 | 100 | 70 | 7 | M 6 |
| | | 27,2 | 39,8 | 26,0–28,0 | 16 | 32 | 100 | 70 | 7 | M 6 |
| X | | 32,0 | 44,6 | 31,0–33,0 | 16 | 32 | 100 | 70 | 7 | M 6 |
| | | 34,0 | 46,6 | 33,0–35,0 | 16 | 32 | 100 | 70 | 7 | M 6 |
| X | 32 | 40,0 | 52,6 | 39,5–41,3 | 16 | 32 | 100 | 70 | 7 | M 6 |
| | | 42,7 | 55,3 | 42,0–44,0 | 16 | 32 | 100 | 70 | 7 | M 6 |
| | 40 | 48,6 | 61,2 | 47,5–49,5 | 16 | 32 | 100 | 70 | 7 | M 6 |
| X | | 50,8 | 63,4 | 49,2–51,5 | 16 | 32 | 100 | 70 | 7 | M 6 |
| Longitud 150 | | | | | | | | | | |
| | 50 | 60,5 | 75,5 | 59,0–61,5 | 16 | 32 | 150 | 110 | 12 | M 8 |
| X | | 63,0 | 78,0 | 62,0–64,0 | 16 | 32 | 150 | 110 | 12 | M 8 |
| | 65 | 69,0 | 84,0 | 68,5–71,0 | 14 | 28 | 150 | 110 | 12 | M 8 |
| X | | 73,0 | 88,0 | 72,5–75,5 | 14 | 28 | 150 | 110 | 12 | M 8 |
| X | | 76,3 | 91,3 | 75,0–78,0 | 14 | 28 | 150 | 110 | 12 | M 8 |
| Longitud 200 | | | | | | | | | | |
| X | 80 | 89,1 | 108,0 | 89,0–91,0 | 14 | 28 | 200 | 150 | 15 | M 12 |
| | 90 | 101,6 | 121,0 | 100,0–103,0 | 14 | 28 | 200 | 150 | 15 | M 12 |
| | 100 | 104,0 | 123,0 | 102,0–105,0 | 14 | 28 | 200 | 150 | 15 | M 12 |
| | | 106,3 | 125,3 | 105,0–107,5 | 14 | 28 | 200 | 150 | 15 | M 12 |
| | | 108,0 | 127,0 | 106,0–109,0 | 14 | 28 | 200 | 150 | 15 | M 12 |
| | | 110,0 | 129,0 | 108,5–111,5 | 14 | 28 | 200 | 150 | 15 | M 12 |
| | | 114,3 | 133,0 | 113,0–118,0 | 14 | 28 | 200 | 150 | 15 | M 12 |
| | 125 | 139,8 | 160,0 | 138,0–142,0 | 14 | 28 | 200 | 150 | 25 | M 12 |
| | | 141,3 | 161,3 | 139,5–143,5 | 14 | 28 | 200 | 150 | 25 | M 12 |
| | 150 | 159,0 | 179,0 | 156,0–160,0 | 12 | 24 | 201 | 150 | 25 | M 12 |
| | | 165,2 | 185,0 | 164,0–167,0 | 12 | 24 | 201 | 150 | 25 | M 12 |
| | | 168,3 | 188,0 | 166,0–170,0 | 12 | 24 | 201 | 150 | 25 | M 12 |
| Longitud 250 | | | | | | | | | | |
| | 200 | 216,3 | 240,0 | 214,0–218,5 | 8 | 16 | 250 | 185 | 35 | M 16 |
| | | 219,1 | 243,6 | 216,5–221,5 | 8 | 16 | 250 | 185 | 35 | M 16 |
| | | 225,0 | 249,5 | 223,0–227,0 | 8 | 16 | 250 | 185 | 35 | M 16 |
| | 250 | 267,4 | 292,0 | 262,0–269,0 | 8 | 16 | 250 | 185 | 35 | M 16 |
| | | 273,1 | 297,6 | 270,0–276,0 | 8 | 16 | 250 | 185 | 35 | M 16 |
| | 300 | 318,5 | 343,0 | 316,0–322,5 | 7 | 14 | 250 | 185 | 35 | M 16 |
| | | 323,9 | 348,4 | 322,0–328,0 | 7 | 14 | 250 | 185 | 35 | M 16 |
| | 350 | 355,6 | 380,0 | 352,0–360,0 | 7 | 14 | 250 | 185 | 75 | M 16 |
| | 400 | 406,4 | 431,0 | 402,0–410,0 | 6 | 12 | 250 | 185 | 75 | M 16 |
| | 450 | 457,2 | 481,0 | 453,0–460,0 | 6 | 12 | 250 | 185 | 90 | M 16 |
| | 500 | 508,0 | 532,0 | 504,0–512,0 | 5 | 10 | 250 | 185 | 90 | M 16 |
| | 550 | 558,8 | 583,0 | 555,0–563,0 | 4,6 | 9,2 | 250 | 185 | 90 | M 16 |
| | 600 | 609,6 | 634,0 | 605,0–614,0 | 4,2 | 8,4 | 250 | 185 | 90 | M 16 |

Medidas:



Instrucciones de Montaje:
ver página 147 !!

INOX acoplamientos de alta presión



INOX BRIDA Adaptador de brida

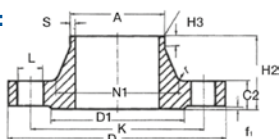
- Los adaptadores de brida INOX BRIDA facilitan la instalación de bombas y válvulas. Sólo tiene que fijar el adaptador de brida a la brida existente con pernos y apretar el acoplamiento.
- Este tipo de unión tiene la ventaja que en un futuro puede retirar el equipo quitando solo los pernos del acoplamiento, sin tener que quitar todas las tuercas de la brida.
- Elija el acoplamiento que necesite (Grip para una unión rígida y Flex para una unión flexible) y determine el DN de la brida que precisa. Le suministraremos el adaptador con brida que necesite.
- **Tamaño:** DN 15 hasta DN 500
- **Material:** AISI 304/316
- **Temperatura:** -30°C hasta +110°C (EPDM)
Para otras temperaturas consultar



Presión nominal 16 DIN 2633:



| DN | Tubo | | Brida | | | Cuello | | | | Resalte | | Tornillos | | | Peso Kgs |
|-----|-------|-----|-------|-----|----|--------|-----|----|----|---------|----|-----------|-------|----|-------------|
| | A | D | C2 | K | H2 | N1 | s | r | H3 | D1 | f1 | Cantidad | Rosca | L | |
| 10 | 17,2 | 90 | 14 | 60 | 35 | 28 | 1,8 | 4 | 6 | 40 | 2 | 4 | M12 | 14 | 0,58 |
| 15 | 21,3 | 95 | 14 | 65 | 35 | 32 | 2,0 | 4 | 6 | 45 | 2 | 4 | M12 | 14 | 0,648 |
| 20 | 26,9 | 105 | 16 | 75 | 38 | 40 | 2,3 | 4 | 6 | 58 | 2 | 4 | M12 | 14 | 0,952 |
| 25 | 33,7 | 115 | 16 | 85 | 38 | 45 | 2,6 | 4 | 6 | 68 | 2 | 4 | M12 | 14 | 1,14 |
| 32 | 42,4 | 140 | 16 | 100 | 40 | 56 | 2,6 | 6 | 6 | 78 | 2 | 4 | M16 | 18 | 1,69 |
| 40 | 48,3 | 150 | 16 | 110 | 42 | 64 | 2,6 | 6 | 7 | 88 | 3 | 4 | M16 | 18 | 1,86 |
| 50 | 60,3 | 165 | 18 | 125 | 45 | 75 | 2,9 | 6 | 8 | 102 | 3 | 4 | M16 | 18 | 2,53 |
| 65 | 76,1 | 185 | 18 | 145 | 45 | 90 | 2,9 | 6 | 10 | 122 | 3 | 4 | M16 | 18 | 3,06 |
| 80 | 88,9 | 200 | 20 | 160 | 50 | 105 | 3,2 | 8 | 10 | 138 | 3 | 8 | M16 | 18 | 3,7 |
| 100 | 114,3 | 220 | 20 | 180 | 52 | 131 | 3,6 | 8 | 12 | 158 | 3 | 8 | M16 | 18 | 4,62 |
| 125 | 139,7 | 250 | 22 | 210 | 55 | 156 | 4,0 | 8 | 12 | 188 | 3 | 8 | M16 | 18 | 6,3 |
| 150 | 168,3 | 285 | 22 | 240 | 55 | 184 | 4,5 | 10 | 12 | 212 | 3 | 8 | M20 | 22 | 7,75 |
| 200 | 219,1 | 340 | 24 | 295 | 62 | 235 | 5,9 | 10 | 16 | 268 | 3 | 12 | M20 | 22 | 11,0 |
| 250 | 273,0 | 405 | 26 | 355 | 70 | 292 | 6,3 | 12 | 16 | 320 | 3 | 12 | M24 | 26 | 15,6 |
| 300 | 323,9 | 460 | 28 | 410 | 78 | 344 | 7,1 | 12 | 16 | 378 | 4 | 12 | M24 | 26 | 22,0 |
| 350 | 355,6 | 520 | 30 | 470 | 82 | 390 | 8,0 | 12 | 16 | 438 | 4 | 16 | M24 | 26 | 31,2 |
| 400 | 406,4 | 580 | 32 | 525 | 85 | 445 | 8,0 | 12 | 16 | 490 | 4 | 16 | M27 | 30 | 39,3 |
| 450 | 457,2 | 640 | 34 | 585 | 85 | 490 | 8,0 | 12 | 16 | 550 | 4 | 20 | M27 | 30 | 44,3 |
| 500 | 508,0 | 715 | 34 | 650 | 90 | 548 | 8,0 | 12 | 16 | 610 | 4 | 20 | M30 | 33 | 61,0 |

Medidas:





- Junta estándar: EPDM
- Medio: Aire comprimido, agua (otros fluidos consultar)
- Temperatura: -30° hasta 130 °C (para más temperatura consultar)

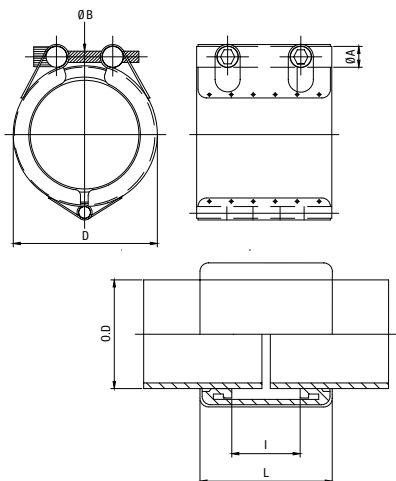
| Código artículo | DN | Ø exterior tubo [mm] | D [mm] | Tolerancia [mm] | Presión de trabajo [bar] | | Longitud [mm] | | Giro tor-nillos [Nm] | Rosca perno | |
|---------------------|--------------------|----------------------|--------|-----------------|---|---|---------------|-----|----------------------|-------------|------|
| | | | | |  |  | L | I | | | |
| Longitud 60 | | | | | | | | | | | |
| X | 65.03.019020.06 | 15 | 20,0 | 32,6 | 19,5-20,5 | 16 | 32 | 60 | 28 | - | M - |
| X | 65.03.021022.06 | | 21,7 | 34,3 | 21,0-22,0 | 16 | 32 | 60 | 28 | 7 | M 6 |
| X | 65.03.024026.06 | 20 | 25,0 | 37,6 | 24,0-26,0 | 16 | 32 | 60 | 28 | 7 | M 8 |
| X | 65.03.026028.06 | | 27,2 | 39,8 | 26,0-28,0 | 16 | 32 | 60 | 28 | 7 | M 8 |
| | 65.03.026029.06 | | 28,2 | 40,8 | 26,4-29,0 | 16 | 32 | 60 | 28 | 7 | M 8 |
| | 65.03.029031.06 | 25 | 30,0 | 42,6 | 29,0-31,0 | 16 | 32 | 60 | 28 | 7 | M 8 |
| | 65.03.031033.06 | | 32,0 | 44,6 | 31,0-33,0 | 16 | 32 | 60 | 28 | 7 | M 8 |
| X | 65.03.033035.06 | | 34,0 | 46,6 | 33,0-35,0 | 16 | 32 | 60 | 28 | 7 | M 8 |
| | 65.03.037039.06 | 32 | 38,0 | 50,6 | 37,0-39,0 | 16 | 32 | 60 | 28 | 7 | M 8 |
| | 65.03.039041.06 | | 40,0 | 52,6 | 39,5-41,3 | 16 | 32 | 60 | 28 | 7 | M 8 |
| | 65.03.042044.06 | | 42,7 | 55,3 | 42,0-44,0 | 16 | 32 | 60 | 28 | 7 | M 8 |
| | 65.03.044046.06 | | 44,5 | 57,1 | 44,0-46,0 | 16 | 32 | 60 | 28 | 7 | M 8 |
| X | 65.03.047049.06 | 40 | 48,6 | 61,2 | 47,5-49,5 | 16 | 32 | 60 | 28 | 7 | M 8 |
| | 65.03.049051.06 | | 50,8 | 63,4 | 49,2-51,5 | 16 | 32 | 60 | 28 | 7 | M 8 |
| Longitud 80 | | | | | | | | | | | |
| X | 65.03.053055.08 | 50 | 54,0 | 65,0 | 53,0-55,0 | 16 | 32 | 80 | 44 | 12 | M 8 |
| | 65.03.056058.08 | | 57,0 | 72,0 | 56,0-58,0 | 16 | 32 | 80 | 44 | 12 | M 8 |
| X | 65.03.059061.08 | | 60,5 | 75,5 | 59,0-61,5 | 16 | 32 | 80 | 44 | 12 | M 8 |
| X | 65.03.062064.08 | | 63,0 | 78,0 | 62,0-64,0 | 16 | 32 | 80 | 44 | 12 | M 8 |
| | 65.03.065068.08 | 65 | 66,7 | 81,7 | 65,4-68,3 | 14 | 28 | 80 | 44 | - | M - |
| | 65.03.068071.08 | | 69,0 | 84,0 | 68,5-71,0 | 14 | 28 | 80 | 44 | 12 | M 8 |
| X | 65.03.072075.08 | | 73,0 | 88,0 | 72,5-75,5 | 14 | 28 | 80 | 44 | 12 | M 8 |
| | 65.03.075078.08 | | 76,3 | 91,3 | 75,0-78,0 | 14 | 28 | 80 | 44 | 12 | M 8 |
| Longitud 110 | | | | | | | | | | | |
| | 65.03.078082.11 | 80 | 79,9 | 98,4 | 78,8-82,0 | 14 | 28 | 110 | 59 | 30 | M 12 |
| | 65.03.082085.11 | | 84,0 | 102,5 | 82,5-85,5 | 14 | 28 | 110 | 59 | 30 | M 12 |
| X | 65.03.088091.11 | | 89,1 | 108,0 | 88,0-91,0 | 14 | 28 | 110 | 59 | 30 | M 12 |
| | 65.03.100103.11 | 90 | 101,6 | 121,0 | 100,0-103,0 | 14 | 28 | 110 | 59 | 30 | M 12 |
| | 65.03.102105.11 | 100 | 104,0 | 122,5 | 102,0-105,0 | 14 | 28 | 110 | 59 | 40 | M 12 |
| | 65.03.105107.11 | | 106,3 | 124,8 | 105,0-107,5 | 14 | 28 | 110 | 59 | 40 | M 12 |
| | 65.03.106109.11 | | 108,0 | 126,5 | 106,0-109,0 | 14 | 28 | 110 | 59 | 40 | M 12 |
| | 65.03.108111.11 | | 110,0 | 129,0 | 108,5-111,5 | 14 | 28 | 110 | 59 | 40 | M 12 |
| X | 65.03.111311.16.11 | | 114,3 | 133,0 | 113,0-116,0 | 14 | 28 | 110 | 59 | 40 | M 12 |
| | 65.03.125129.11 | 125 | 127,0 | 147,0 | 125,0-129,0 | 14 | 28 | 111 | 59 | 40 | M 12 |
| | 65.03.127130.11 | | 129,0 | 149,0 | 127,5-130,0 | 14 | 28 | 111 | 59 | 40 | M 12 |
| | 65.03.131135.11 | | 133,0 | 153,0 | 131,0-135,0 | 14 | 28 | 111 | 59 | 40 | M 12 |
| | 65.03.138142.11 | | 139,8 | 160,0 | 138,0-142,0 | 14 | 28 | 111 | 59 | 40 | M 12 |
| | 65.03.139143.11 | | 141,3 | 161,3 | 139,5-143,5 | 14 | 28 | 111 | 59 | 40 | M 12 |
| | 65.03.151155.11 | 150 | 154,0 | 174,0 | 151,5-155,5 | 12 | 24 | 111 | 59 | 40 | M 12 |
| X | 65.03.156160.11 | | 159,0 | 179,0 | 156,0-160,0 | 12 | 24 | 111 | 59 | 40 | M 12 |
| | 65.03.164167.11 | | 165,2 | 185,0 | 164,0-167,0 | 12 | 24 | 111 | 59 | 40 | M 12 |
| | 65.03.166170.11 | | 168,3 | 188,3 | 166,0-170,0 | 12 | 24 | 111 | 59 | 40 | M 12 |
| | 65.03.178182.11 | 175 | 180,0 | 200,0 | 178,0-182,0 | 10 | 20 | 111 | 59 | 45 | M 12 |
| Longitud 150 | | | | | | | | | | | |
| | 65.03.198203.15 | 200 | 200,0 | 224,5 | 198,0-203,0 | 8 | 16 | 150 | 89 | 60 | M 14 |
| | 65.03.202206.15 | | 204,0 | 228,5 | 202,0-206,0 | 8 | 16 | 150 | 89 | 60 | M 14 |
| | 65.03.214218.15 | | 216,3 | 240,0 | 214,0-218,5 | 8 | 16 | 150 | 89 | 60 | M 14 |
| | 65.03.216221.15 | | 219,1 | 243,6 | 216,5-221,5 | 8 | 16 | 150 | 89 | 60 | M 14 |
| | 65.03.222227.15 | | 225,0 | 249,5 | 222,5-227,5 | 8 | 16 | 150 | 89 | 60 | M 14 |
| | 65.03.251257.15 | 250 | 254,0 | 278,5 | 251,0-257,0 | 8 | 16 | 150 | 89 | 60 | M 14 |
| | 65.03.262269.15 | | 267,4 | 292,0 | 262,0-269,0 | 8 | 16 | 150 | 89 | 60 | M 14 |
| | 65.03.270276.15 | | 273,1 | 297,6 | 270,0-276,0 | 8 | 16 | 150 | 89 | 60 | M 14 |
| | 65.03.301308.15 | 300 | 304,0 | 328,5 | 301,5-308,0 | 7 | 14 | 150 | 89 | 60 | M 14 |
| | 65.03.316322.15 | | 318,5 | 343,0 | 316,0-322,5 | 7 | 14 | 150 | 89 | 60 | M 14 |
| | 65.03.322328.15 | | 323,9 | 348,4 | 322,0-328,0 | 7 | 14 | 150 | 89 | 60 | M 14 |
| | 65.03.352359.15 | 350 | 355,6 | 380,1 | 352,0-359,5 | 7 | 14 | 150 | 89 | 75 | M 14 |
| | 65.03.402410.15 | 400 | 406,4 | 430,9 | 402,0-410,0 | 6 | 12 | 150 | 89 | 75 | M 14 |
| | 65.03.453460.15 | 450 | 457,2 | 481,7 | 453,0-460,0 | 6 | 12 | 150 | 89 | 90 | M 14 |
| | 65.03.504512.15 | 500 | 508,0 | 532,5 | 504,0-512,0 | 5 | 10 | 150 | 89 | 90 | M 14 |
| | 65.03.555563.15 | 550 | 558,8 | 583,3 | 555,0-563,0 | 4,6 | 9,2 | 150 | 89 | 90 | M 14 |
| | 65.03.605614.15 | 600 | 609,6 | 634,1 | 605,0-614,0 | 4,2 | 8,4 | 150 | 89 | 90 | M 14 |

INOX acoplamiento de alta presión



INOX REP S

Medidas:



Instrucciones de montaje INOX REP S:



Montaje:

1. Comprobar que coincida la medida de la unión y el diámetro exterior del tubo.
2. Limpiar el tubo de suciedad, óxido y pintura.
3. Marcar la posición de la abrazadera en el tubo (lugar dañado del tubo = centro de la abrazadera).
4. Aflojar los pernos y abrir la abrazadera.
5. Sacar la goma y colocarla alrededor de la parte dañada de tal manera que cubra lo máximo posible el daño.
6. Colocar la abrazadera alrededor de la goma.
7. Comprobar que el tubo y la abrazadera estén bien asentados.
8. Apretar los pernos con una llave dinamométrica o llave allen **uniformemente**.
¡Atención! Tener en cuenta el momento de giro indicado!
9. Después de 15 minutos volver a apretar los pernos con el momento de giro indicado.





- Junta estándar: EPDM
- Medio: Aire comprimido, agua (otros fluidos consultar)
- Temperatura: -30° hasta 130 °C (para más temperatura consultar)

| Código artículo | DN | Ø exterior tubo [mm] | D [mm] | Tolerancia [mm] | Presión de trabajo [bar] | | Longitud [mm] | | Giro tor-nillos [Nm] | Rosca perno |
|---------------------|-----|----------------------|--------|-----------------|---|----|---------------|----|----------------------|-------------|
| | | | | |   | L | I | | | |
| Longitud 60 | | | | | | | | | | |
| X 65.04.015017.06 | 13 | 15,8 | 34,0 | 15,3-17,0 | 16 | 32 | 60 | 28 | 7 | M 6 |
| X 65.04.019021.06 | 15 | 20,0 | 32,6 | 19,5-21,3 | 16 | 32 | 60 | 28 | 7 | M 6 |
| X 65.04.021023.06 | | 21,7 | 34,3 | 21,0-23,0 | 16 | 32 | 60 | 28 | 7 | M 6 |
| X 65.04.024026.06 | 20 | 25,0 | 37,6 | 24,0-26,5 | 16 | 32 | 60 | 28 | 7 | M 6 |
| X 65.04.026028.06 | | 27,2 | 39,8 | 26,0-28,5 | 16 | 32 | 60 | 28 | 7 | M 6 |
| 65.04.026029.06 | | 28,2 | 40,8 | 26,4-29,5 | 16 | 32 | 60 | 28 | 7 | M 6 |
| 65.04.029031.06 | 25 | 30,0 | 42,6 | 29,0-31,5 | 16 | 32 | 60 | 28 | 7 | M 6 |
| X 65.04.031033.06 | | 32,0 | 44,6 | 31,0-33,5 | 16 | 32 | 60 | 28 | 7 | M 6 |
| 65.04.033035.06 | | 34,0 | 46,6 | 33,0-35,5 | 16 | 32 | 60 | 28 | 7 | M 6 |
| X 65.04.037039.06 | 32 | 38,0 | 50,6 | 37,0-39,5 | 16 | 32 | 60 | 28 | 7 | M 6 |
| 65.04.039041.06 | | 40,0 | 52,6 | 39,5-41,8 | 16 | 32 | 60 | 28 | 7 | M 6 |
| 65.04.042044.06 | | 42,7 | 55,3 | 42,0-44,5 | 16 | 32 | 60 | 28 | 7 | M 6 |
| 65.04.044046.06 | | 44,5 | 57,1 | 44,0-46,5 | 16 | 32 | 60 | 28 | 7 | M 6 |
| X 65.04.047050.06 | 40 | 48,6 | 61,2 | 47,5-50,5 | 16 | 32 | 60 | 28 | 7 | M 6 |
| X 65.04.049051.06 | | 50,8 | 63,4 | 49,2-51,2 | 16 | 32 | 60 | 28 | 7 | M 6 |
| Longitud 80 | | | | | | | | | | |
| 65.04.053056.08 | 50 | 54,0 | 69,0 | 53,0-56,0 | 16 | 32 | 80 | 44 | 12 | M 8 |
| 65.04.056059.08 | | 57,0 | 72,0 | 56,0-59,0 | 16 | 32 | 80 | 44 | 12 | M 8 |
| 65.04.059062.08 | | 60,5 | 75,5 | 59,0-62,0 | 16 | 32 | 80 | 44 | 12 | M 8 |
| 65.04.062065.08 | | 63,0 | 78,0 | 62,0-65,0 | 16 | 32 | 80 | 44 | 12 | M 8 |
| X 65.04.065069.08 | 65 | 66,7 | 81,7 | 65,4-69,0 | 14 | 28 | 80 | 44 | - | M - |
| 65.04.068072.08 | | 69,0 | 84,0 | 68,0-72,0 | 14 | 28 | 80 | 44 | 12 | M 8 |
| X 65.04.072076.08 | | 73,0 | 88,0 | 72,5-76,5 | 14 | 28 | 80 | 44 | 12 | M 8 |
| 65.04.075079.08 | | 76,3 | 91,3 | 75,0-79,0 | 14 | 28 | 80 | 44 | 12 | M 8 |
| 65.04.078083.08 | 80 | 79,9 | 96,9 | 78,8-83,0 | 14 | 28 | 80 | 59 | 15 | M 8 |
| X 65.04.082086.08 | | 84,0 | 103,0 | 82,5-86,0 | 14 | 28 | 80 | 59 | 15 | M 8 |
| X 65.04.088092.08 | | 89,1 | 108,0 | 88,0-92,0 | 14 | 28 | 80 | 59 | 15 | M 12 |
| 65.04.100104.08 | 90 | 101,6 | 121,0 | 100,0-104,0 | 14 | 28 | 80 | 59 | 15 | M 12 |
| Longitud 110 | | | | | | | | | | |
| 65.04.102106.11 | 100 | 104,0 | 123,0 | 102,0-106,0 | 14 | 28 | 110 | 59 | 15 | M 12 |
| 65.04.105108.11 | | 106,3 | 125,3 | 105,0-108,5 | 14 | 28 | 110 | 59 | 15 | M 12 |
| X 65.04.106110.11 | | 108,0 | 127,0 | 106,0-110,0 | 14 | 28 | 110 | 59 | 15 | M 12 |
| X 65.04.113118.11 | | 114,3 | 133,0 | 113,0-118,0 | 14 | 28 | 110 | 59 | 15 | M 12 |
| X 65.04.125129.11 | 125 | 127,0 | 147,0 | 125,0-129,5 | 14 | 28 | 111 | 59 | 25 | M 12 |
| 65.04.127131.11 | | 129,0 | 149,0 | 127,5-131,0 | 14 | 28 | 111 | 59 | 25 | M 12 |
| 65.04.131135.11 | | 133,0 | 153,0 | 131,0-135,5 | 14 | 28 | 111 | 59 | 25 | M 12 |
| 65.04.138142.11 | | 139,8 | 160,0 | 138,0-142,5 | 14 | 28 | 111 | 59 | 25 | M 12 |
| 65.04.139144.11 | | 141,3 | 161,3 | 139,5-144,0 | 14 | 28 | 111 | 59 | 25 | M 12 |
| 65.04.151158.11 | 150 | 154,0 | 174,0 | 151,5-158,0 | 12 | 24 | 111 | 59 | 25 | M 12 |
| 65.04.156161.11 | | 159,0 | 179,0 | 156,0-161,0 | 12 | 24 | 111 | 59 | 25 | M 12 |
| 65.04.164168.11 | | 165,2 | 185,0 | 164,0-168,5 | 12 | 24 | 111 | 59 | 25 | M 12 |
| 65.04.166170.11 | | 168,3 | 188,3 | 166,0-170,5 | 12 | 24 | 111 | 59 | 25 | M 12 |
| X 65.04.178183.11 | 175 | 180,0 | 200,0 | 178,0-183,0 | 10 | 20 | 111 | 59 | 30 | M 12 |

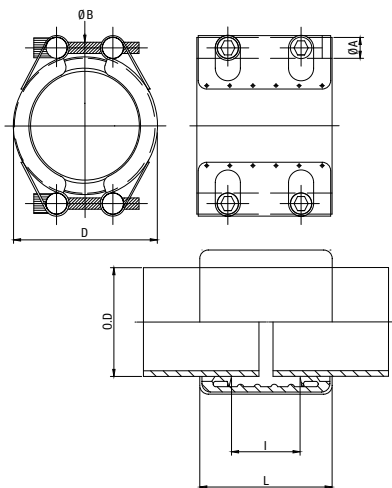
INOX acoplamientos de alta presión



INOX REP D

| Código artículo | DN | Ø exterior tubo [mm] | D [mm] | Tolerancia [mm] | Presión de trabajo [bar] | | Longitud [mm] | | Giro tornillos [Nm] | Rosca perno |
|---------------------|-------------|----------------------|--------------|-------------------|--------------------------|-----|---------------|----|---------------------|-------------|
| | | | | | | | L | I | | |
| Longitud 150 | | | | | | | | | | |
| | 200 | 200,0 | 224,2 | 198,0-203,5 | 8 | 16 | 150 | 89 | 45 | M 14 |
| | | 204,0 | 228,2 | 202,0-206,5 | 8 | 16 | 150 | 89 | 45 | M 14 |
| | | 216,3 | 240,0 | 214,0-219,0 | 8 | 16 | 150 | 89 | 45 | M 14 |
| X | | 219,1 | 243,3 | 216,5-222,0 | 8 | 16 | 150 | 89 | 45 | M 14 |
| X | | 225,0 | 249,5 | 221,0-229,0 | 8 | 16 | 150 | 89 | 45 | M 14 |
| | 250 | 254,0 | 278,2 | 251,0-257,0 | 8 | 16 | 150 | 89 | 45 | M 14 |
| | | 267,4 | 292,0 | 262,0-270,0 | 8 | 16 | 150 | 89 | 45 | M 14 |
| X | | 273,1 | 297,3 | 270,0-277,0 | 8 | 16 | 150 | 89 | 45 | M 14 |
| | 300 | 304,0 | 328,2 | 301,5-309,0 | 7 | 14 | 150 | 89 | 75 | M 14 |
| | | 318,5 | 343,0 | 316,0-323,0 | 7 | 14 | 150 | 89 | 75 | M 14 |
| X | | 323,9 | 348,1 | 322,0-329,0 | 7 | 14 | 150 | 89 | 75 | M 14 |
| X | | 350 | 355,6 | 380,0 352,0-361,0 | 7 | 14 | 150 | 89 | 75 | M 14 |
| | 400 | 408,4 | 431,0 | 402,0-411,0 | 6 | 12 | 150 | 89 | 75 | M 14 |
| | 450 | 457,2 | 481,0 | 453,0-462,0 | 6 | 12 | 150 | 89 | 90 | M 14 |
| | 500 | 508,0 | 532,0 | 504,0-513,0 | 5 | 10 | 150 | 89 | 90 | M 14 |
| | 550 | 558,8 | 583,0 | 554,0-564,0 | 4,6 | 9,2 | 150 | 89 | 90 | M 14 |
| | 600 | 609,6 | 634,0 | 605,0-615,0 | 4,2 | 8,4 | 150 | 89 | 90 | M 14 |
| | 650 | 660,4 | 684,6 | 654,0-666,0 | - | 8 | 150 | 89 | 90 | M 14 |
| | 700 | 711,2 | 735,0 | 705,0-717,0 | - | 7,4 | 150 | 89 | 90 | M 14 |
| | 750 | 762,0 | 786,2 | 756,0-768,0 | - | 7,2 | 150 | 89 | 90 | M 14 |
| | 800 | 812,8 | 837,0 | 806,0-818,0 | - | 6,8 | 150 | 89 | 90 | M 14 |
| | 850 | 863,6 | 887,8 | 857,0-869,0 | - | 6,4 | 150 | 89 | 90 | M 14 |
| | 900 | 914,4 | 938,6 | 908,0-920,0 | - | 6 | 150 | 89 | 90 | M 14 |
| | 1000 | 1016,0 | 1040,2 | 1010,0-1022,0 | - | 5,4 | 150 | 89 | 90 | M 14 |

Medidas:





Instrucciones de montaje INOX REP D:

Montaje:

1. Comprobar que coincida la medida de la unión y el diámetro exterior del tubo.
2. Limpiar el tubo de suciedad, óxido y pintura.
3. Marcar la posición de la abrazadera en el tubo (lugar dañado del tubo = centro de la abrazadera).
4. Aflojar los pernos y desmontar la abrazadera.
5. Sacar la goma y colocarla alrededor de la parte dañada de tal manera que cubra lo máximo posible el daño.
6. Colocar las piezas de la abrazadera alrededor de la goma.
7. Comprobar que el tubo y la abrazadera estén bien asentados.
8. Apretar los pernos con una llave dinamométrica o llave allen **uniformemente**.
¡Atención: Tener en cuenta el momento de giro indicado!
9. Después de 15 minutos volver a apretar los pernos con el momento de giro indicado.







INOX acoplamientos de alta presión



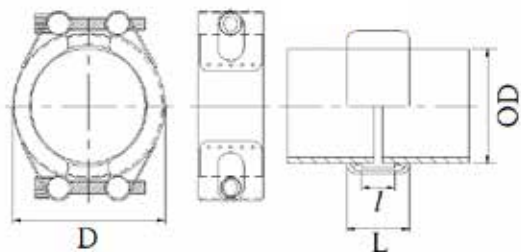
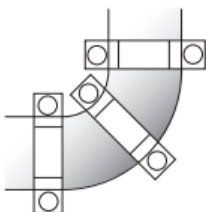
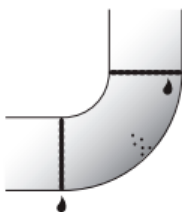
INOX REP C

- **Junta estándar:** EPDM
- **Medio:** Aire comprimido, agua (otros fluidos consultar)
- **Temperatura:** -30 ° hasta 130 °C (otras temperatura consultar)



| Código artículo | Ø exterior tubo DN | D (mm) | Tolerancia (mm) | Presión de trabajo (bar) | | Longitud (mm) | | Par de apriete (Nm) | | Rosca perno |
|--------------------|--------------------|--------|-----------------|---|---|---------------|----|---------------------|----|-------------|
| | | | |   |   | L | I | | | |
| Longitud 27 | | | | | | | | | | |
| 65.07.015017.02 | 13 | 15,8 | 34,0 | 15,3-17,0 | 17,5 | 40 | 27 | 8 | 7 | M 6 |
| 65.07.019021.02 | 15 | 20,0 | 38,0 | 19,5-21,3 | 17,5 | 35 | 27 | 10 | 7 | M 6 |
| 65.07.021023.02 | | 21,7 | 39,0 | 21,0-23,0 | 17,5 | 35 | 27 | 10 | 7 | M 6 |
| 65.07.024026.02 | 20 | 25,0 | 43,0 | 24,0-26,5 | 17,5 | 35 | 27 | 10 | 7 | M 6 |
| 65.07.026028.02 | | 27,2 | 45,0 | 26,0-28,5 | 17,5 | 35 | 27 | 10 | 7 | M 6 |
| 65.07.026029.02 | | 28,2 | 46,0 | 26,4-29,5 | 17,5 | 35 | 27 | 10 | 7 | M 6 |
| 65.07.029031.02 | 25 | 30,0 | 48,0 | 29,0-31,5 | 17,5 | 35 | 27 | 10 | 7 | M 6 |
| 65.07.031033.02 | | 32,0 | 50,0 | 31,0-33,5 | 17,5 | 35 | 27 | 10 | 7 | M 6 |
| 65.07.033035.02 | | 34,0 | 52,0 | 33,0-35,5 | 17,5 | 35 | 27 | 10 | 7 | M 6 |
| 65.07.037039.02 | 32 | 38,0 | 56,0 | 37,0-39,5 | 17,5 | 35 | 27 | 10 | 7 | M 6 |
| 65.07.039041.02 | | 40,0 | 58,0 | 39,5-41,8 | 17,5 | 35 | 27 | 10 | 7 | M 6 |
| 65.07.042044.02 | | 42,7 | 61,0 | 42,0-44,5 | 17,5 | 35 | 27 | 10 | 7 | M 6 |
| 65.07.044046.02 | | 44,5 | 62,5 | 44,0-45,5 | 17,5 | 35 | 27 | 10 | 7 | M 6 |
| 65.07.047050.02 | 40 | 48,6 | 65,0 | 47,5-50,5 | 15 | 30 | 27 | 10 | 7 | M 6 |
| 65.07.049051.02 | | 50,8 | 68,8 | 49,2-51,5 | 15 | 30 | 27 | 10 | 7 | M 6 |
| Longitud 40 | | | | | | | | | | |
| 65.07.053056.04 | 50 | 54,0 | 78,6 | 53,0-56,0 | 15 | 30 | 40 | 18 | 12 | M 8 |
| 65.07.056059.04 | | 57,0 | 81,6 | 56,0-59,0 | 15 | 30 | 40 | 18 | 12 | M 8 |
| 65.07.059062.04 | X | 60,5 | 85,0 | 59,0-62,0 | 15 | 30 | 40 | 18 | 12 | M 8 |
| 65.07.062065.04 | | 63,0 | 87,6 | 62,0-65,0 | 15 | 30 | 40 | 18 | 12 | M 8 |
| 65.07.065069.04 | 65 | 66,7 | 91,3 | 65,4-69,0 | 15 | 30 | 40 | 18 | 12 | M 8 |
| 65.07.068072.04 | | 69,0 | 93,6 | 68,0-72,0 | 15 | 30 | 40 | 18 | 12 | M 8 |
| 65.07.072076.04 | | 73,0 | 97,6 | 72,5-76,5 | 15 | 30 | 40 | 18 | 12 | M 8 |
| 65.07.075079.04 | X | 76,3 | 101,0 | 75,0-79,0 | 15 | 30 | 40 | 18 | 12 | M 8 |
| Longitud 60 | | | | | | | | | | |
| 65.07.078083.06 | 80 | 79,9 | 111,9 | 78,8-83,0 | 15 | 30 | 60 | 29 | 28 | M 12 |
| 65.07.082086.06 | | 84,0 | 118,0 | 82,5-86,5 | 15 | 30 | 60 | 29 | 28 | M 12 |
| 65.07.088092.06 | X | 89,1 | 121,0 | 88,0-92,0 | 15 | 30 | 60 | 29 | 28 | M 12 |
| 65.07.100104.06 | 90 | 101,6 | 133,0 | 100,0-104,0 | 15 | 30 | 60 | 29 | 28 | M 12 |
| 65.07.102106.06 | 100 | 104,0 | 136,0 | 102,0-105,0 | 12,5 | 25 | 60 | 29 | 28 | M 12 |
| 65.07.105108.06 | | 106,3 | 138,3 | 105,0-108,5 | 12,5 | 25 | 60 | 29 | 28 | M 12 |
| 65.07.106110.06 | | 108,0 | 140,0 | 106,0-110,0 | 12,5 | 25 | 60 | 29 | 28 | M 12 |
| 65.07.113118.06 | X | 114,3 | 147,0 | 113,0-118,0 | 12,5 | 25 | 60 | 29 | 28 | M 12 |
| 65.07.125129.06 | 125 | 127,0 | 159,4 | 125,0-129,5 | 9 | 18 | 60 | 29 | 28 | M 12 |
| 65.07.127131.06 | | 129,0 | 161,4 | 127,5-131,0 | 9 | 18 | 60 | 29 | 28 | M 12 |
| 65.07.131135.06 | | 133,0 | 165,4 | 131,0-135,5 | 9 | 18 | 60 | 29 | 28 | M 12 |
| 65.07.138142.06 | | 139,8 | 172,0 | 138,0-142,5 | 9 | 18 | 60 | 29 | 28 | M 12 |
| 65.07.139144.06 | | 141,3 | 173,7 | 139,5-144,0 | 9 | 18 | 60 | 29 | 28 | M 12 |
| 65.07.151156.06 | 150 | 154,0 | 186,4 | 151,5-156,5 | 9 | 18 | 60 | 29 | 28 | M 12 |
| 65.07.156161.06 | | 159,0 | 191,4 | 156,0-161,5 | 9 | 18 | 60 | 29 | 28 | M 12 |
| 65.07.164168.06 | | 165,2 | 198,0 | 164,0-168,0 | 9 | 18 | 60 | 29 | 28 | M 12 |
| 65.07.166171.06 | | 168,3 | 200,7 | 166,0-171,0 | 9 | 18 | 60 | 29 | 28 | M 12 |
| 65.07.178183.06 | 175 | 180,0 | 212,4 | 178,0-183,0 | 8 | 16 | 60 | 29 | 28 | M 12 |
| Longitud 61 | | | | | | | | | | |
| 65.07.198203.06 | 200 | 200,0 | 232,7 | 198,0-203,5 | 8 | 16 | 61 | 29 | 40 | M 12 |
| 65.07.202206.06 | | 204,0 | 236,7 | 202,0-206,5 | 8 | 16 | 61 | 29 | 40 | M 12 |
| 65.07.214219.06 | | 216,3 | 249,0 | 214,0-219,0 | 8 | 16 | 61 | 29 | 40 | M 12 |
| 65.07.216222.06 | | 219,1 | 251,8 | 216,5-222,0 | 8 | 16 | 61 | 29 | 40 | M 12 |
| 65.07.251257.06 | 250 | 254,0 | 286,7 | 251,0-257,0 | 8 | 16 | 61 | 29 | 40 | M 12 |
| 65.07.262270.06 | | 267,4 | 300,0 | 262,0-270,0 | 8 | 16 | 61 | 29 | 40 | M 12 |
| 65.07.270277.06 | | 273,1 | 305,8 | 270,0-277,0 | 8 | 16 | 61 | 29 | 40 | M 12 |
| 65.07.301309.06 | 300 | 304,0 | 338,0 | 301,5-309,0 | 8 | 16 | 61 | 29 | 40 | M 12 |
| 65.07.316323.06 | | 318,5 | 353,0 | 316,0-323,0 | 8 | 16 | 61 | 29 | 40 | M 12 |
| 65.07.322329.06 | | 323,9 | 357,9 | 322,0-329,0 | 8 | 16 | 61 | 29 | 40 | M 12 |
| 65.07.352361.06 | 350 | 355,6 | 389,6 | 352,0-361,0 | 8 | 16 | 61 | 29 | 40 | M 12 |

INOX REP C

Medidas:**Aplicación:**

INOX acoplamientos de alta presión



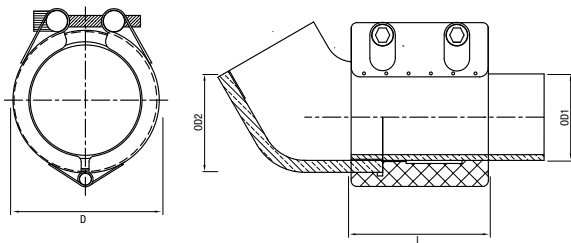
INOX REP E

- **Junta estándar:** EPDM
- **Medio:** Aire comprimido, agua (otros fluidos consultar)
- **Temperatura:** -30 ° hasta 130 °C (otras temperatura consultar)

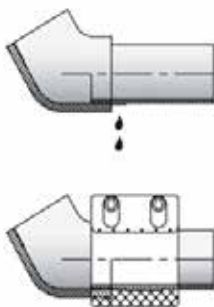


| Código artículo | Ø exterior tubo DN | Ø exterior tubo mm | pulgada | Ø exterior conexión mm | D mm | Presión de trabajo (bar) | Longitud (mm) L | Par de apriete (Nm) | Rosca perno |
|--------------------|--------------------|--------------------|---------|------------------------|------|--------------------------|-----------------|---------------------|-------------|
| Longitud 60 | | | | | | | | | |
| 65.08.027034.06 | 20 | 27,2 | 3/4" | 34,3 | 47,9 | 10 | 60 | 7 | M 6 |
| 65.08.034042.06 | 25 | 34,0 | 1" | 42,3 | 55,9 | 10 | 60 | 7 | M 6 |
| 65.08.042051.06 | 32 | 42,7 | 1 1/4" | 51,0 | 64,4 | 10 | 60 | 15 | M 6 |
| 65.08.048057.06 | 40 | 48,6 | 1 1/2" | 57,2 | 70,8 | 10 | 60 | 15 | M 6 |
| 65.08.060070.06 | 50 | 60,5 | 2" | 70,4 | 84,0 | 10 | 60 | 20 | M 6 |

Medidas:



Aplicación:





INOX acoplamientos de alta presión

