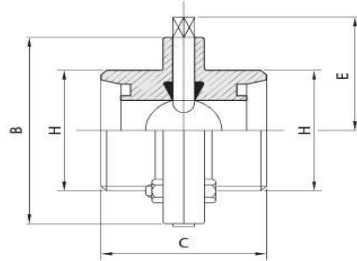
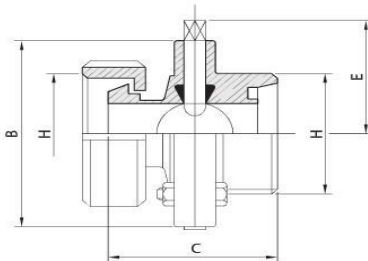


Válvula de mariposa DIN macho-macho



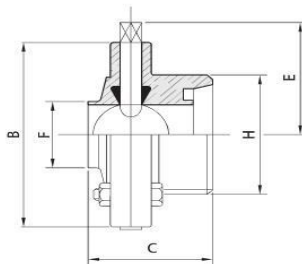
DIN mm	H mm	B mm	C mm	E mm	kg
25	52	87	64	57	-
32	58	92	64	60	-
40	65	97	72	62	-
50	78	110	72	68	-
65	95	127	76	77	-
80	110	142	100	85	-
100	130	162	104	95	-
125	160	*	*	*	-
150	190	*	*	*	-

Válvula de mariposa DIN macho-hembra



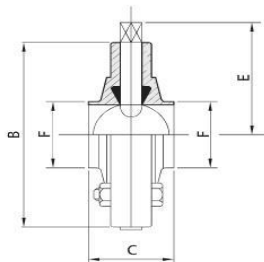
DIN mm	H mm	B mm	C mm	E mm	kg
25	52	87	74	57	-
32	58	92	78	60	-
40	65	97	87	62	-
50	78	110	89	68	-
65	95	127	95	77	-
80	110	142	117	85	-
100	130	162	128	95	-
125	160	*	*	*	-
150	190	*	*	*	-

Válvula de mariposa soldar-macho DIN



DIN mm	F mm	H mm	B mm	C mm	E mm	kg
25	29	52	87	52	57	-
32	35	58	92	53	60	-
40	41	65	97	61	62	-
50	53	78	110	61	68	-
65	70	95	127	63	77	-
80	85	110	142	80	85	-
100	104	130	162	84	95	-
125	129	160	*	*	*	-
150	154	190	*	*	*	-

Válvula de mariposa soldar-soldar



DN mm	F mm	B mm	C mm	E mm	kg
25	29	87	40	57	-
32	35	92	42	60	-
40	41	97	50	62	-
50	53	110	50	68	-
65	70	127	50	77	-
80	85	142	60	85	-
100	104	162	64	95	-
125	129	*	*	*	-
150	154	*	*	*	-
200	204	*	*	*	-



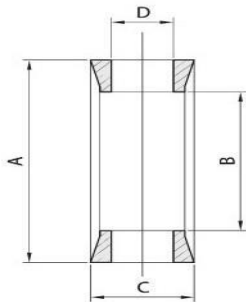
PER DN mm	A
25-65	165
80	165
100	165

Maneta con liberador a tracción



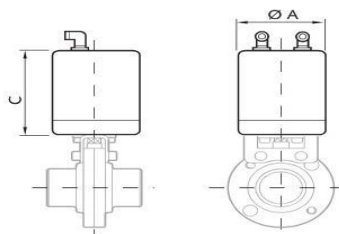
PER DN mm	A
25-65	180
80	180
100	180

Junta para valvula de mariposa, en silicona, EPDM y VITON



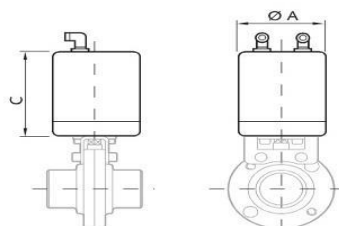
DIN mm	A mm	B mm	C mm	D mm
25	41	25	19,5	10
32	48,5	32	19,5	10
40	54,5	38	20	12
50	67	50	20	12
65	85,5	66	21	12
80	100	81	24	14
100	115,5	100	25	14

Actuador neumático vertical de simple efecto para válvula de mariposa



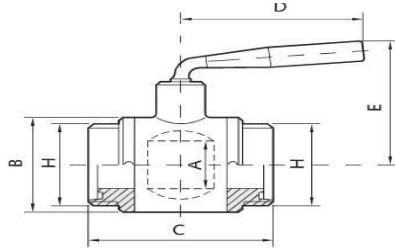
dimension	PER DN	A	C	kg
	mm	mm	mm	
1	25-32-40-50-60-65	90	175	4,00
2	80-100	115	175	7,00

Actuador neumático vertical de doble efecto para válvula de mariposa



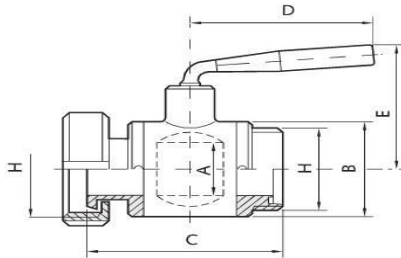
dimension	PER DN	A	C	kg
	mm	mm	mm	
1	25-32-40-50-65	90	175	4,00
2	80-100	115	175	7,00

Válvula de esfera macho-macho



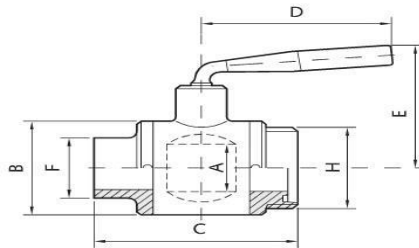
DIN mm	H mm	A mm	B mm	C mm	D mm	E mm	kg
10	28	10	28	70	75	58	0,30
15	34	15	35	72	82	67	0,40
20	44	20	40	65	82	70	0,55
25	52	25	50	96	98	75	1,10
32	58	32	58	98	120	101	1,60
40	65	36	62	104	120	101	1,70
50	78	45	78	115	153	120	2,80
50	78	50	90	133	153	125	3,80
60	85	57	100	138	153	130	4,40
65	95	66	114	165	190	158	7,00
80	110	76	133	184	248	193	10,20
100	130	98,5	160	198	248	230	15,00

Válvula de esfera macho-hembra



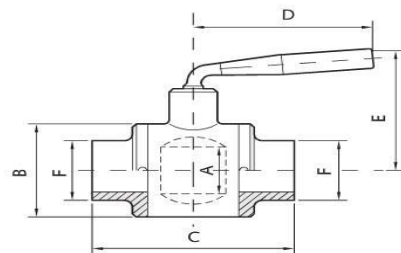
DIN mm	H mm	A mm	B mm	C mm	D mm	E mm
10	28	10	28	70	75	58
15	34	15	35	75	82	67
20	44	20	40	70	82	70
25	52	25	50	87	98	75
32	58	32	58	98	120	101
40	65	36	62	105	120	101
50	78	45	78	115	153	120
50	78	50	90	135	153	125
60	85	57	100	138	153	130
65	95	66	114	168	190	158
80	110	76	133	188	248	193
100	130	98,5	160	200	248	230

Válvula de esfera macho-soldar



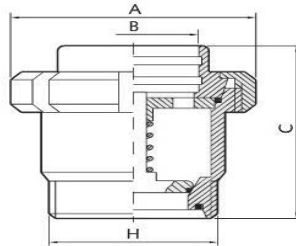
DIN mm	H mm	F mm	A mm	B mm	C mm	D mm	E mm
10	28	13	10	28	70	75	58
15	34	18	15	35	70	82	67
20	44	23	20	40	65	82	70
25	52	28	25	50	92	98	75
32	58	35	32	58	96	120	101
40	65	40	36	62	104	120	101
50	78	52	45	78	115	153	120
50	78	54	50	90	133	153	125
60	85	62	57	100	138	153	130
65	95	70	66	114	165	190	158
80	110	85	76	133	184	248	193
100	130	104	98,5	160	197,5	248	230

Válvula de esfera soldar-sol



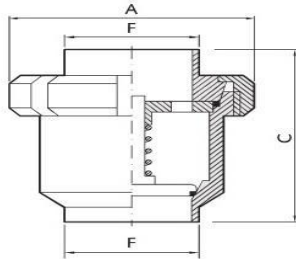
DN mm	F mm	A mm	B mm	C mm	D mm	E mm
10	12	10	28	70	75	58
15	18	15	35	70	82	67
20	22	20	40	65	82	70
25	28	25	50	90	98	75
32	35	32	58	95	120	101
40	40	36	62	104	128	101
50	52	45	78	115	153	120
50	54	50	90	133	153	125
60	62	57	100	138	153	130
65	70	66	114	165	190	158
80	85	76	133	184	248	193
100	104	98,5	160	197	248	230

Válvula de retención hembra-mandrinar



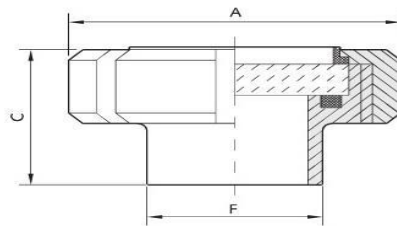
DIN mm	H mm	A mm	B mm	C mm
25	52	70	28,2	90
32	58	78	34,2	90
40	65	92	40,2	103
50	78	112	52,2	109
65	95	127	70,3	120
80	110	148	85,3	149
100	130	178	102	158

Válvula de retención soldar-soldar



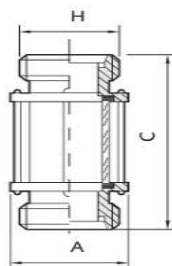
DIN mm	F mm	A mm	C mm
25	28	78	87
32	34	78	94
40	40	92	103
50	52	112	106
65	70	127	127
80	85	148	137
100	101,6	178	158

Mirilla plana para soldar



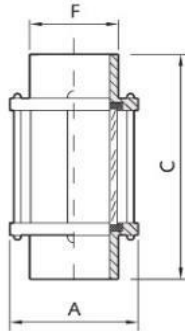
DIN mm	F mm	A mm	C mm
25	31	63	35
32	37	70	38
40	43	78	39
50	55	92	42
65	72	112	47
80	87	127	52
100	106	148	62

Mirilla tubular macho-macho



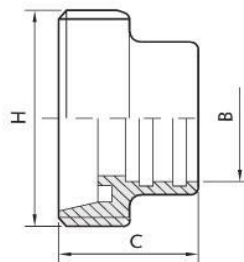
DIN mm	H mm	A mm	C mm
25	52	56	157
32	58	65	157
40	65	70	157
50	78	85	163
60	85	95	157
65	95	100	163
80	110	125	173
100	130	152	173
125	160	-	-

Mirilla tubular soldar-soldar



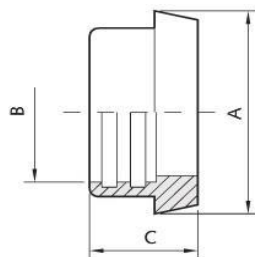
DN mm	F mm	A mm	C mm
25	28	56	157
32	34	65	157
40	40	70	157
50	52	85	157
60	60	95	157
65	70	100	163
80	85	125	173
100	101,6	152	171
125	129,0	-	-

Macho DIN para mandrinar



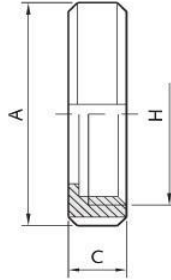
DIN mm	H mm	B mm	C mm
10	28	12,2	12
15	34	18,2	18
20	44	22,2	22
25	52	28,2	29
32	58	34,2	32
40	65	40,2	33
50	78	52,2	35
60	85	60,3	37
65	95	70,3	40
80	110	85,3	45
100	130	101,9	54
100	130	104,3	54

Casquillo DIN para mandrinar



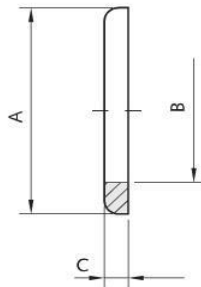
DIN mm	A mm	B mm	C mm
10	22	12,2	17
15	28	18,2	17
20	36	22,2	18
25	44	28,2	22
32	50	34,2	25
40	56	40,2	26
50	68	52,2	28
60	76	60,3	30
65	86	70,3	32
80	100	85,3	37
100	121	101,9	44
100	121	104,3	44

Hembra DIN



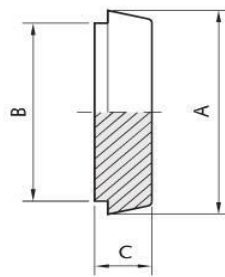
DIN mm	H mm	A mm	C mm
10	28	38	18
15	34	44	18
20	44	54	20
25	52	63	21
32	58	70	21
40	65	78	21
50	78	92	22
60	85	99	22
65	95	112	25
80	110	127	29
90	120	138	30
100	130	148	31
125	160	178	34
150	190	210	40

Junta para racord DIN



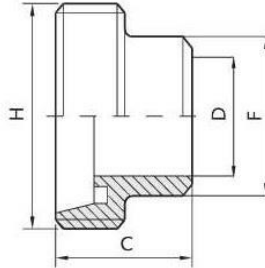
DIN mm	A mm	B mm	C mm
10	20	12	4,5
15	26	18	4,5
20	33	23	4,5
25	40	30	5
32	46	36	5
40	52	42	5
50	64	54	5
60	72	62	5
65	81	71	5
80	95	85	5
90	102	92	6
100	114	104	6
150	167	155	7

Tapa de cierre DIN



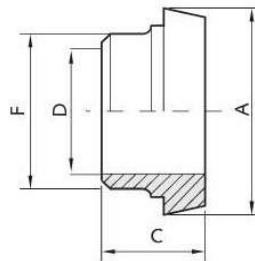
DIN mm	A mm	B mm	C mm
10	22	18	9
15	28	24	9
20	36	30	11
25	44	35	13
32	50	41	13
40	56	48	13
50	68	61	14
60	76	69	15
65	86	79	16
80	100	93	16
100	121	114	20
125	150	137	22
150	176	163	24

Macho a soldar



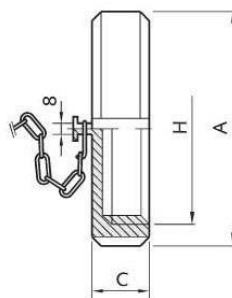
DIN mm	H mm	F mm	D mm	C mm
10	28	15	10	21
15	34	21	16	21
20	44	25	20	24
25	52	31	26	29
32	58	37	32	32
40	65	43	38	33
50	78	55	50	35
60	85	64	58	37
65	95	72	66	40
80	110	87	81	45
100	130	106	98	54

Casquillo a soldar



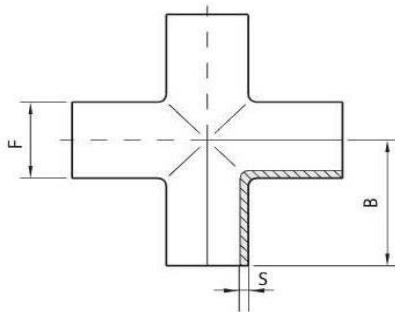
DIN mm	F mm	D mm	A mm	C mm
10	15	10	22	17
15	21	16	28	17
20	25	20	36	18
25	31	26	44	22
32	37	32	50	25
40	43	38	56	26
50	55	50	68	28
60	64	58	76	30
65	72	66	86	32
80	87	81	100	37
100	106	98	121	44
125	129	125	150	34
150	154	150	176	37

Tapón con cadena



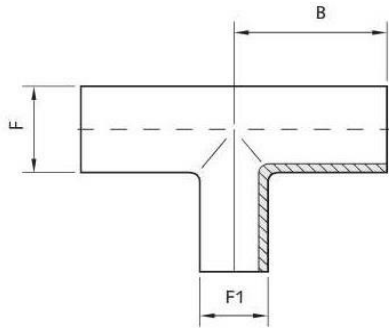
DIN mm	H mm	A mm	C mm
15	34	44	18
20	44	54	21
25	52	63	21
32	58	70	21
40	65	78	21
50	78	92	22
60	85	99	22
65	95	112	25
80	110	127	29
100	130	148	31
125	160	178	34

Cruz DIN, pulido de espejo interior y exterior



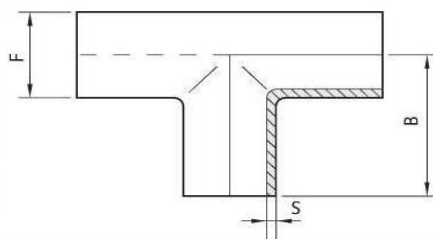
DN mm	F mm	S mm	B mm
15	18	1,5	35
20	22	1,5	40
25	28	1,5	50
32	34	1,5	55
40	40	1,5	60
50	52	1,5	70
65	70	2	80
80	85	2	90
100	101,6	2	100
100	104	2	100

Te con reducción para mandrinar, pulido de espejo interior y exterior



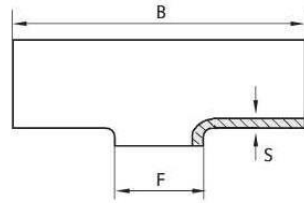
DN mm	F mm	F1 mm	B mm
32	34	28	55
40	40	32	60
50	52	40	70
65	70	52	80
80	85	70	90
100	101,6	85	100
100	104	85	100
32	34	22	55
40	40	28	60
50	52	32	70
65	70	40	80
80	85	52	90
100	101,6	70	100

Te para mandrinar, pulido exterior de espejo e interior satinado



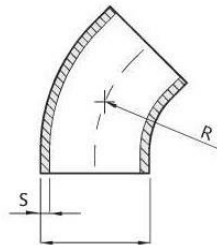
DN mm	F mm	S mm	B mm
15	18	1,5	35
20	22	1,5	40
25	28	1,5	50
32	34	1,5	55
40	40	1,5	60
50	52	1,5	70
60	60	1,5	75
65	70	2	80
80	85	2	90
100	101,6	2	100
100	104	2	100
125	129	2	124
150	154	2	143
200	204	2	178

Te recortada para soldar, pulido de espejo interior y exterior)



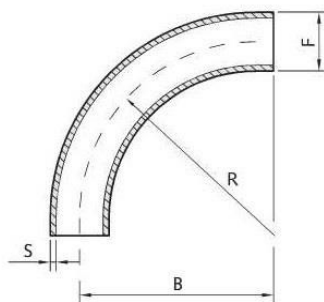
DN mm	F mm	S mm	B mm
25	28	1,5	50
32	34	1,5	55
40	40	1,5	60
50	52	1,5	70
60	60	1,5	80
65	70	2	90
80	85	2	100
100	101,6	2	100
125	129	2	124
150	154	2	143
200	204	2	178

Curva de 45° para soldar, pulido de espejo interior y exterior



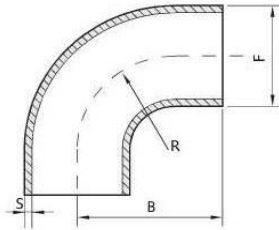
DN mm	F mm	S mm	R mm
25	28	1,5	50
32	34	1,5	55
40	40	1,5	60
50	52	1,5	70
60	60	1,5	75
65	70	2	80
80	85	2	90
100	101,6	2	110
100	104	2	100
125	129	2	188

Curva de 90° RM=3D para mandrinar, pulido de espejo interior y exterior



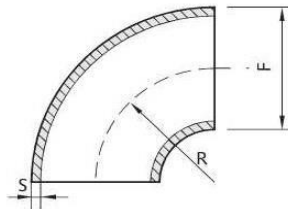
DN mm	F mm	S mm	R mm	B mm
40	40	1,5	120	170
50	52	1,5	150	225
60	60	1,5	180	230
65	70	2	210	250
100	104	2	200	250

Curva de 90° para mandrinar, pulido de espejo



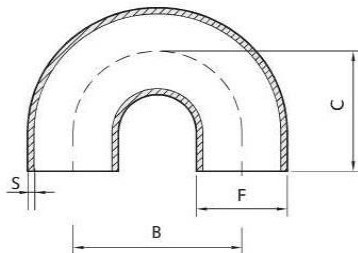
DN mm	F mm	S mm	R mm	B mm
15	18	1,5	35	47
20	22	1,5	40	52
25	28	1,5	50	70
32	34	1,5	55	78
40	40	1,5	60	85
50	52	1,5	70	97
60	60	1,5	75	110
65	70	2	80	110
80	85	2	90	123
100	101,6	2	110	140
100	104	2	100	150

Curva de 90° para soldar, pulido de espejo



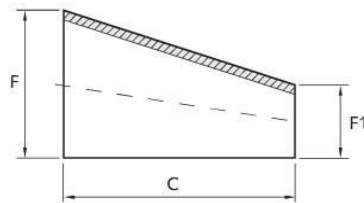
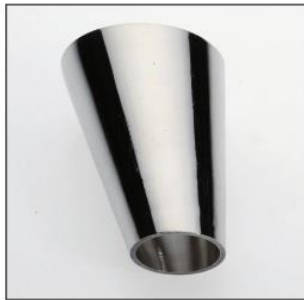
DN mm	F mm	S mm	R mm
15	18	1,5	35
20	22	1,5	40
25	28	1,5	50
32	34	1,5	55
40	40	1,5	60
50	52	1,5	70
60	60	1,5	75
65	70	2	80
80	85	2	90
100	101,6	2	110
100	104	2	100
125	129	2	188
150	154	2	225

Curva de 180° para mandrinar, pulido de espejo



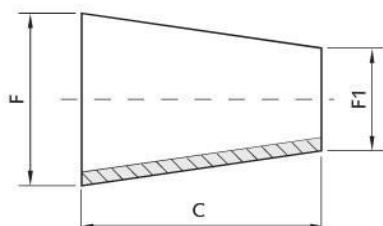
DN mm	F mm	S mm	B mm	C mm
25	28	1,5	100	70
32	34	1,5	112	78
40	40	1,5	126	90
50	52	1,5	146	100
60	60	1,5	152	110
65	70	2	172	110
80	85	2	184	130
100	101,6	2	220	150
100	104	2	220	150

Reducción excéntrica a soldar, pulido de espejo interior y exterior



DN mm	DN1 mm	C mm	F mm	F1 mm
25	20	18	28	22
32	25	18	34	28
40	32	18	40	34
50	40	36	52	40
65	50	54	70	52
80	65	45	85	70
100	80	57	104	85
25	15	30	28	18
32	20	36	34	22
40	25	36	40	28
50	32	54	52	34
65	40	90	70	40
80	50	99	85	52
100	65	102	104	70

Reducción concéntrica a soldar, pulido de espejo interior y exterior



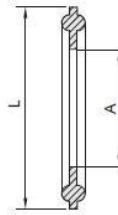
DN mm	DN1 mm	C mm	F mm	F1 mm
20	15	12	22	18
25	20	18	28	22
32	25	18	34	28
40	32	18	40	34
50	40	36	52	40
65	50	54	70	52
80	65	45	85	70
100	80	57	101,6	85
100	80	57	104	85
25	15	30	28	18
32	20	36	34	22
40	25	36	40	28
50	32	54	52	34
65	40	90	70	40
80	50	99	85	52
100	65	102	101,6	70
100	65	102	104	70
40	20	54	40	22
50	25	72	52	28
65	32	108	70	34
80	40	135	85	40
100	50	156	101,6	52

Abrazadera clamp



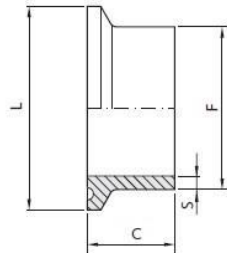
DN inch	L mm
1/2	25,1
3/4	25,1
1	50,4
1 1/2	50,4
2	64,0
2 1/2	77,4
3	90,9
4	118,8
6	167,0
8	217,4

Junta racor Clamp



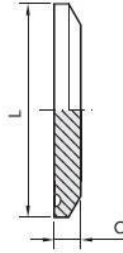
DN inch	A mm	L mm
1/2	8,70	25,1
3/4	15,70	25,1
1	22,10	50,4
1 1/2	34,80	50,4
2	47,50	64,0
2 1/2	60,20	77,4
3	72,80	90,9
4	97,6	118,8
6	150	167,0
8	200	217,4
10	248	168,3
12	299	319,3

Casquillo Clamp para soldar



DN inch	L mm	F mm	C mm	S mm
1/2	25,1	12,7	28,6	1,65
3/4	25,1	19,1	28,6	1,65
1	50,4	25,4	28,6	1,65
1 1/2	50,4	38,1	28,6	1,65
2	64	50,8	28,6	1,65
2 1/2	77,4	63,5	28,6	1,65
3	90,9	76,1	28,6	1,65
4	118,8	101,6	28,6	2,00
6	167	152,4	28,6	2,77
8	217,4	203,2	28,6	2,77
10	268,5	254	28,6	3,56
12	319,3	304,8	28,6	3,56

Tapa Clamp



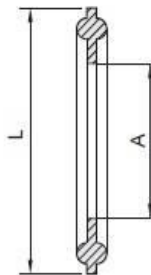
DN Inch	L mm	C mm
1/2	25,1	6,4
3/4	25,1	6,4
1	50,4	6,4
1 1/2	50,4	6,4
2	64	6,4
2 1/2	77,4	6,4
3	90,9	6,4
4	118,8	7,9
6	167	11
8	217,4	11
10	268,5	11
12	319,3	11

Abrazadera Clamp/DIN



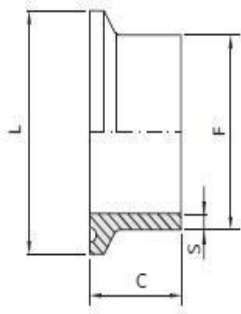
DN mm	L mm
10	34
15	34
20	34
25	50,4
32	50,4
40	50,4
50	64
65	90,9
80	106
100	118,8
125	155
150	183
200	233,5
250	268,5

Junta Clamp/Din



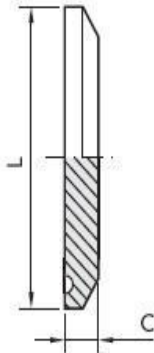
DN mm	A mm	L mm
10	10	34
15	16	34
20	20	34
25	26	50,4
32	32	50,4
40	38	50,4
50	50	64
65	66	90,9
80	81	106
100	100	118,8
125	125	155
150	147	183
200	200	233,5
250	248	268,5

Casquillo Clamp/Din



DN mm	L mm	F mm	C mm	S mm
10	34	12	21,5	1,5
15	34	18	21,5	1,5
20	34	22	21,5	1,5
25	50,4	28	21,5	1,5
32	50,4	34	21,5	1,5
40	50,4	40	21,5	1,5
50	64	52	21,5	1,5
65	90,9	70	28,6	2
80	106	85	28,6	2
100	118,8	104	28,6	2
125	155	125	28,6	2
150	183	154	28,6	2
200	233,3	204	28,6	2
250	268,3	254	28,6	3

Tapa Clamp/Din



DN mm	L mm	C mm
10	34	4,7
15	34	4,7
20	34	4,7
25	50,4	6,4
32	50,4	6,4
40	50,4	6,4
50	64	6,4
65	90,9	6,4
80	106	7,9
100	118,8	11
125	155	11
150	183	11
200	233,5	11
250	268,5	11