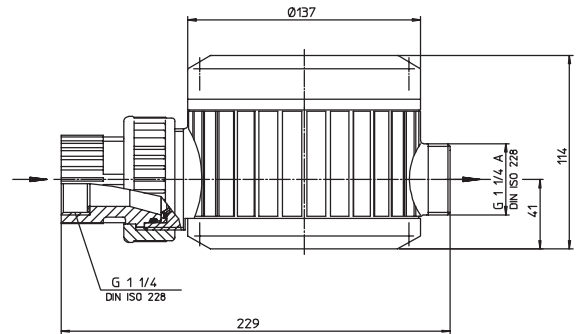


Example of type code of liquid meter FMC
FMC 100/PP/O/F
FMC 100/PP/O/F = Design
FMC 100/PP/O/F = Model
FMC 100/PP/O/F = Material meter body
FMC 100/PP/O/F = Material seal
FMC 100/PP/O/F = Version (F = use with barrel pump
A = fixed installation into pipework)

FMC 100/PP/. /F in Polypropylene for portable use with barrel pumps	4
FMC 100 PP/. /A in Polypropylene for fixed installation into pipework systems	5
FMC 100/ETFE/. /F in Ethylene-Tetrafluor-Ethylene for portable use with barrel pumps	6
FMC 100/ETFE/. /A in Ethylene-Tetrafluor-Ethylene for fixed installation into pipework systems	7
FMC 100/S/. /F in Stainless Steel (316 Ti) for portable use with barrel pumps	8
FMC 100/S/. /A in Stainless Steel (316 Ti) for fixed installation into pipework systems	9
FMC 250/PP/. /A in Polypropylene FMC 250/PVDF/. /A in Polyvinylidenfluoride for fixed installation into pipework systems	10
Examples of liquids Pressure loss charts	11
Interface amplifiers for preset batch control	12
Quick Action Taps with digital display unit	13
Examples of applications FMC 100	14
The Great Range of FLUX Pumps	15

FMC 100/PP/. /F IN POLYPROPYLENE FOR PORTABLE USE WITH BARREL PUMPS



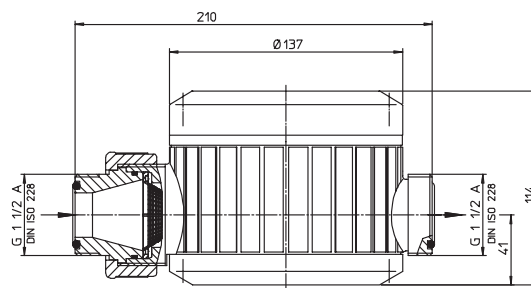
Type	FMC 100/PP/0/F	FMC 100/PP/1/F	FMC 100/PP/2/F
Flowrate	10 – 100 l/min	10 – 100 l/min	10 – 100 l/min
Operating pressure	max. 4 bar	max. 4 bar	max. 4 bar
Viscosity	max. 2500 mPas (cP)	max. 2500 mPas (cP)	max. 2500 mPas (cP)
Operating temperature	max. 60 °C	max. 60 °C	max. 60 °C
Accuracy	± 1%	± 1%	± 1%
Mode of operation	Normal mode or auto mode in conjunction with an interface amplifier		
Inlet-outlet connections	G 1 1/4 – 1 1/4 A BSP 1 1/4" female – BSP 1 1/4" male	G 1 1/4 – 1 1/4 A BSP 1 1/4" female – BSP 1 1/4" male	G 1 1/4 – 1 1/4 A BSP 1 1/4" female – BSP 1 1/4" male
Material: meter body	Polypropylene (PP)	Polypropylene (PP)	Polypropylene (PP)
Material: measuring chamber	PPS	PPS	PPS
Material: seal	EPDM (0)	FKM (1)	FEP (2)
Weight	1,1 kg	1,1 kg	1,1 kg
Part No.	A04 00 005	A04 00 007	A04 00 009

VERSION WITHOUT DIGITAL DISPLAY UNIT FOR USE WITH QUICK ACTION TAP – SEE PAGE 13

Liquid meter with top cover and connecting cable, 5 m long.
Part No. of quick action tap on page 13.

Part No.	A04 00 035	A04 00 037	A04 00 039
----------	------------	------------	------------

FMC 100/PP/. /A IN POLYPROPYLENE FOR FIXED INSTALLATION INTO PIPEWORK



Type	FMC 100/PP/0/A	FMC 100/PP/1/A	FMC 100/PP/2/A
Flowrate	10 – 100 l/min	10 – 100 l/min	10 – 100 l/min
Operating pressure	max. 4 bar	max. 4 bar	max. 4 bar
Viscosity	max. 2500 mPas (cP)	max. 2500 mPas (cP)	max. 2500 mPas (cP)
Operating temperature	max. 60 °C	max. 60 °C	max. 60 °C
Genauigkeit	± 1%	± 1%	± 1%
Accuracy	Normal mode or auto mode in conjunction with an interface amplifier		
Inlet-outlet connections	G 1 1/2 A – G 1 1/2 A BSP 1 1/2" – BSP 1 1/2" male	G 1 1/2 A – G 1 1/2 A BSP 1 1/2" – BSP 1 1/2" male	G 1 1/2 A – G 1 1/2 A BSP 1 1/2" – BSP 1 1/2" male
Material: meter body	Polypropylene (PP)	Polypropylene (PP)	Polypropylene (PP)
Material: measuring chamber	PPS	PPS	PPS
Material: seal	EPDM (0)	FKM (1)	FEP (2)
Weight	1,1 kg	1,1 kg	1,1 kg
Part No.	A04 00 012	A04 00 014	A04 00 016

VERSION FOR USE WITH EXTERNAL DIGITAL DISPLAY UNIT

Liquid meter with top cover and connecting cable, 5 m long.

Part No.	A04 00 041	A04 00 043	A04 00 045
----------	------------	------------	------------

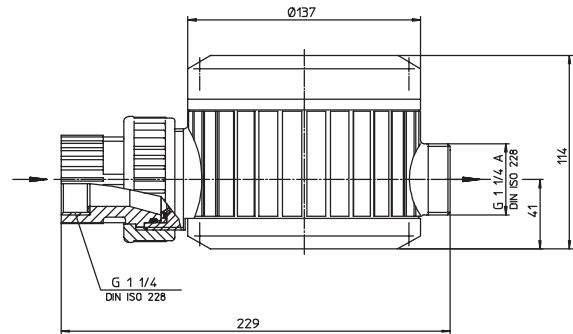
External digital display unit / Part No.

for wall mounting	001 42 008	for mounting into a switchboard	001 42 009
-------------------	-------------------	---------------------------------	-------------------

ACCESSORIES

Part No.			
Pipe connection DN 25 (PP)	001 41 947	001 41 947	001 41 947
Flange DN 25 (PP)	001 41 907	001 41 909	001 41 911
Flange DN 32 (PP)	001 41 913	001 41 915	001 41 917

FMC 100/ETFE/. /F IN ETHYLEN-TETRAFLUOR-ETHYLENE FOR PORTABLE USE WITH BARREL PUMPS



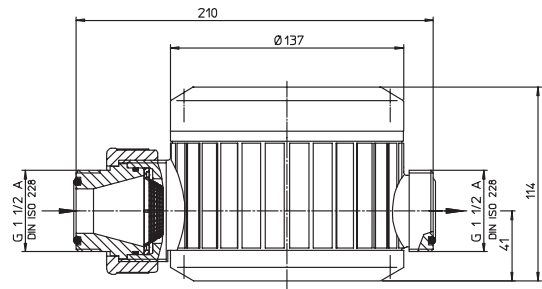
Type	FMC 100/ETFE/0/F	FMC 100/ETFE/1/F	FMC 100/ETFE/3/F
Flowrate	10 – 100 l/min	10 – 100 l/min	10 – 100 l/min
Operating pressure	max. 4 bar	max. 4 bar	max. 4 bar
Viscosity	max. 2500 mPas (cP)	max. 2500 mPas (cP)	max. 2500 mPas (cP)
Operating temperature	max. 60 °C	max. 60 °C	max. 60 °C
Accuracy	± 1%	± 1%	± 1%
Mode of operation	Normal mode or auto mode in conjunction with an interface amplifier		
Inlet-outlet connections	G 1 1/4 – G 1 1/4 A BSP 1 1/4" female – BSP 1 1/4" male	G 1 1/4 – G 1 1/4 A BSP 1 1/4" female – BSP 1 1/4" male	G 1 1/4 – G 1 1/4 A BSP 1 1/4" female – BSP 1 1/4" male
Material: meter body	Ethylen-Tetrafluor-Ethylene (ETFE)	Ethylen-Tetrafluor-Ethylene (ETFE)	Ethylen-Tetrafluor-Ethylene (ETFE)
Material: measuring chamber	Ethylen-Tetrafluor-Ethylene (ETFE)	Ethylen-Tetrafluor-Ethylene (ETFE)	Ethylen-Tetrafluor-Ethylene (ETFE)
Material: seal	EPDM (0)	FKM (1)	FFKM (3)
Weight	1,4 kg	1,4 kg	1,4 kg
Part No.	A04 00 006	A04 00 008	A04 00 077

VERSION WITHOUT DIGITAL UNIT FOR USE WITH QUICK ACTION TAP – SEE PAGE 13

Liquid meter with top cover and connecting cable, 5 m long.
Part No. of quick action tap on page 13.

Part No.	A04 00 036	A04 00 038	A04 00 079
-----------------	-------------------	-------------------	-------------------

FMC 100/ETFE/. /A IN ETHYLEN-TETRAFLUOR-ETHYLENE FOR FIXED INSTALLATION INTO PIPEWORK



Type	FMC 100/ETFE/0/A	FMC 100/ETFE/1/A	FMC 100/ETFE/3/A
Flowrate	10 – 100 l/min	10 – 100 l/min	10 – 100 l/min
Operating pressure	max. 4 bar	max. 4 bar	max. 4 bar
Viscosity	max. 2500 mPas (cP)	max. 2500 mPas (cP)	max. 2500 mPas (cP)
Operating temperature	max. 60 °C	max. 60 °C	max. 60 °C
Accuracy	± 1%	± 1%	± 1%
Mode of operation	Normal mode or auto mode in conjunction with an interface amplifier		
Inlet-outlet connections	G 1 1/2 A – G 1 1/2 A BSP 1 1/2" – BSP 1 1/2" male	G 1 1/2 A – G 1 1/2 A BSP 1 1/2" – BSP 1 1/2" male	G 1 1/2 A – G 1 1/2 A BSP 1 1/2" – BSP 1 1/2" male
Material: meter body	Ethylen-Tetrafluor-Ethylene (ETFE)	Ethylen-Tetrafluor-Ethylene (ETFE)	Ethylen-Tetrafluor-Ethylene (ETFE)
Material: measuring chamber	Ethylen-Tetrafluor-Ethylene (ETFE)	Ethylen-Tetrafluor-Ethylene (ETFE)	Ethylen-Tetrafluor-Ethylene (ETFE)
Material: seal	EPDM (0)	FKM (1)	FFKM (3)
Weight	1,1 kg	1,1 kg	1,1 kg
Part No.	A04 00 013	A04 00 015	A04 00 078

VERSION FOR USE WITH EXTERNAL DIGITAL DISPLAY UNIT

Liquid meter with top cover and connecting cable, 5 m long.

Part No.	A04 00 042	A04 00 044	A04 00 080
----------	------------	------------	------------

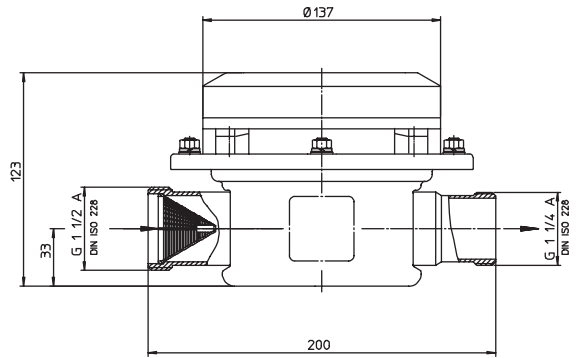
External digital display unit / Part No.

for wall mounting	001 42 008	for mounting into a switchboard	001 42 009
-------------------	-------------------	---------------------------------	-------------------

ACCESSORIES

Part No.			
Pipe connection DN 25 (PVDF/ETFE)	001 41 948	001 41 948	001 41 948
Flange DN 25 (PVDF)	001 41 908	001 41 910	001 41 912
Flange DN 32 (PVDF)	001 41 914	001 41 916	001 41 918

FMC 100/S/. /F IN STAINLESS STEEL FOR PORTABEL USE WITH BARREL PUMPS



Type	FMC 100/S/0/F	FMC 100/S/1/F	FMC 100/S/2/F
Flowrate	10 – 100 l/min	10 – 100 l/min	10 – 100 l/min
Operating pressure	max. 6 bar	max. 6 bar	max. 6 bar
Viscosity	max. 2500 mPas (cP)	max. 2500 mPas (cP)	max. 2500 mPas (cP)
Operating temperature	max. 80 °C	max. 80 °C	max. 80 °C
Accuracy	± 1%	± 1%	± 1%
Mode of operation	Normal mode or auto mode in conjunction with an interface amplifier		
Inlet-outlet connections	G 1½ A – G 1¼ A BSP 1½" – BSP 1¼" male connecting piece to barrel pump NOT included in the FMC	G 1½ A – G 1¼ A BSP 1½" – BSP 1¼" male	G 1½ A – G 1¼ A BSP 1½" – BSP 1¼" male
Material: meter body	Stainless steel 316 Ti (S)	Stainless steel 316 Ti (S)	Stainless steel 316 Ti (S)
Material: measuring chamber	PPS	PPS	PPS
Material: seal	EPDM (0)	FKM (1)	FEP (2)
Weight	1,7 kg	1,7 kg	1,7 kg
Part No.	A04 00 029	A04 00 031	A04 00 033

VERSION WITHOUT DIGITAL DISPLAY UNIT FOR USE WITH QUICK ACTION TAP – SEE PAGE 13

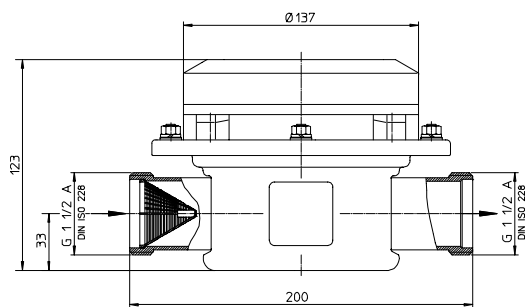
Liquid meter with top cover and connecting cable, 5 m long.
Part No. of quick action tap on page 13.

Part No.	A04 00 053	A04 00 055	A04 00 057
----------	------------	------------	------------

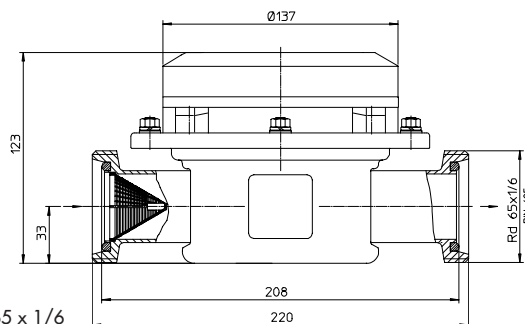
ACCESSORIES

Part No.	A04 00 053	A04 00 055	A04 00 057
Connecting piece to barrel pump G 1¼ – G 1½	959 06 059	959 06 059	959 06 059

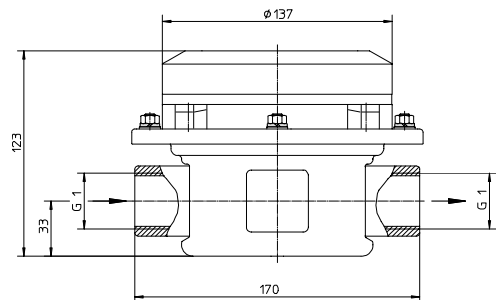
FMC 100/S/.A IN STAINLESS STEEL FOR FIXED INSTALLATION INTO PIPEWORK



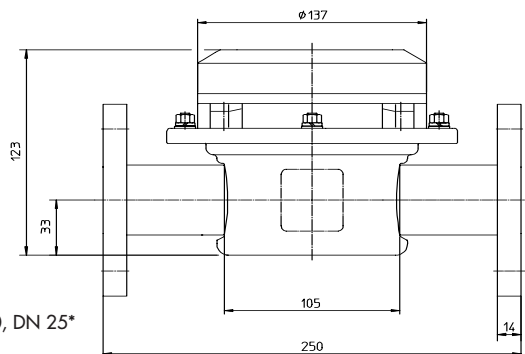
Connection G 1 1/2 A (BSP 1 1/2" male)



Connection Rd 65 x 1/6



Connection G 1 (BSP 1" female)



Connection PN 10, DN 25*

Type	FMC 100/S/0/A	FMC 100/S/1/A	FMC 100/S/2/A
Flowrate	10 – 100 l/min	10 – 100 l/min	10 – 100 l/min
Operating pressure	max. 6 bar	max. 6 bar	max. 6 bar
Viscosity	max. 2500 mPas (cP)	max. 2500 mPas (cP)	max. 2500 mPas (cP)
Operating temperature	max. 80 °C	max. 80 °C	max. 80 °C
Accuracy	± 1%	± 1%	± 1%
Mode of operation	Normal mode or auto mode in conjunction with an interface amplifier		
Inlet-outlet connections	see dimensional drawings above		
Material: meter body	Stainless steel316 Ti (S)	Stainless steel316 Ti (S)	Stainless steel316 Ti (S)
Material: measuring chamber	PPS	PPS	PPS
Material: seal	EPDM (0)	FKM (1)	FEP (2)
Weight	1,7 kg	1,7 kg	1,7 kg
Part No.			
Connection G 1 1/2 A	A04 00 071	A04 00 072	A04 00 073
Connection Rd 65 x 1/6	A04 00 023	A04 00 025	A04 00 027
Connection G 1	A04 00 085	A04 00 086	A04 00 087
Flange PN 10, DN 25*	A04 00 082	A04 00 083	A04 00 084

* Flange size: outer-Ø 115 mm, pitch circle-Ø 85 mm, 4 bores Ø 14 mm each

VERSION FOR USE WITH EXTERNAL DIGITAL DISPLAY UNIT

Liquid meter with top cover and connecting cable, 5 m long.

Part No.			
Connection G 1 1/2 A	A04 00 074	A04 00 075	A04 00 076
Connection Rd 65 x 1/6	A04 00 059	A04 00 061	A04 00 063

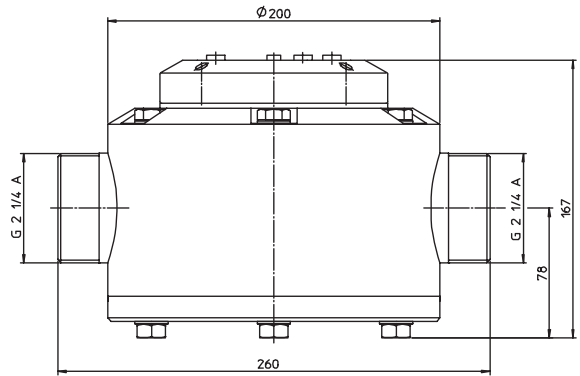
External digital display unit / Part No.

for wall mounting	001 42 008	for mounting into a switchboard	001 42 009
-------------------	-------------------	---------------------------------	-------------------

ACCESSORIES

Part No.			
Pipe connection RV32-40/25	001 41 986	001 41 987	001 41 988
Pipe connection RV32-40/32	001 41 989	001 41 990	001 41 991

FMC 250/PP/. /A, FMC 250/PVDF/. /A FOR FIXED INSTALLATION INTO PIPEWORK



Type	FMC 250/PP/0/A	FMC 250/PP/1/A	FMC 250/PVDF/0/A	FMC 250/PVDF/1/A
Flowrate	25 – 250 l/min	25 – 250 l/min	25 – 250 l/min	25 – 250 l/min
Operating pressure	max. 6 bar	max. 6 bar	max. 6 bar	max. 6 bar
Viscosity	max. 2500 mPas (cP)	max. 2500 mPas (cP)	max. 2500 mPas (cP)	max. 2500 mPas (cP)
Operating temperature	max. 60 °C	max. 60 °C	max. 60 °C	max. 60 °C
Accuracy	± 1%	± 1%	± 1%	± 1%
Mode of operation	Normal mode or auto mode in conjunction with interface amplifier Type FSV 100			
Inlet-outlet connections*	G 2 1/4 A (BSP 2 1/4" male)	G 2 1/4 A (BSP 2 1/4" male)	G 2 1/4 A (BSP 2 1/4" male)	G 2 1/4 A (BSP 2 1/4" male)
Material: meter body	Polypropylene (PP)	Polypropylene (PP)	Polyvinylidenfluoride (PVDF)	Polyvinylidenfluoride (PVDF)
Material: measuring chamber	Polyethylene (PE)	Polyethylene (PE)	Polyvinylidenfluoride (PVDF)	Polyvinylidenfluoride (PVDF)
Material: seal	EPDM (0)	FKM (1)	EPDM (0)	FKM (1)
Weight	4,2 kg	4,2 kg	4,2 kg	4,2 kg
Part No.	A04 25 400	A04 25 410	A04 25 600	A04 25 610

* other connections on request

EXAMPLE OF APPLICATION



The FLUX FMC 250 for fixed installation into pipework systems

Material	Polypropylene (PP)	Ethylene-Tetrafluor-Ethylene (ETFE)	Polyvinyliden-fluoride (PVDF)	Stainless steel 316 Ti (S)
The examples are based on a temperature of 20 °C. Factors such as higher temperatures, different concentrations, impurities and mixtures of liquids have to be taken into account. For further information please see FLUX Resistance Chart.	Accumulator acid* Acetic acid Ammonia water Arsenic acid* Boric acid* Brake fluid Calcium chloride* Caustic soda Citric acid* Ferric chloride* Formic acid Glycol* Hydrochloric acid* Mineral oil* Phosphoric acid* Photo developer* Sulfuric acid up to 60%* Tartaric acid* Zinc chloride*	Bromine acid Butylamine Chloroforme** Diethylamine Essential oils** Ethyl acetate Ethylene oxide* Hydrofluoric acid up to 40%* Hydrogene peroxide* Nicotinic acid** Nitrating acid up to 70%** Nitric acid (concentrated)** Petroleum ether* Sulfuric acid up to 98%* Tetrahydrofurane**	Chloric acid Chromic acid Hydrobromic acid Hydrofluoric acid* Hydrogene peroxide* Nitric acid up to 75% Paraffine emulsion* Potassium bromide Sodium hypochlorite Sulfuric acid up to 98% Trichlorobenzene as well as most liquids listed under PP	Acetone Butanone Ether Ethyl alcohol Freon/Frigen** Glycerine Hexanol Isopropyl ether** Linseed oil* Methanol Methylene chloride* Methoxybutanol Mineral oil* Perchloroethylene* Petroleum* Styrene** Trichloroethylene** Vinegar

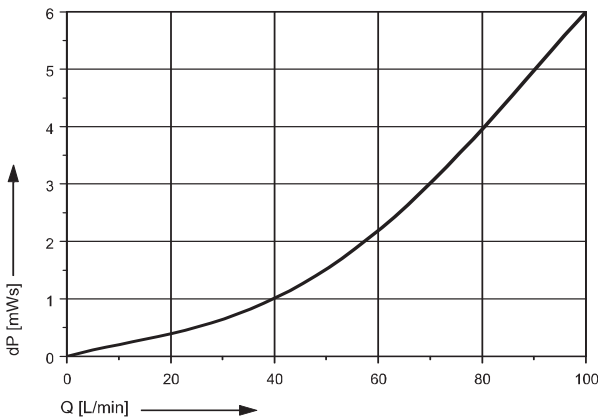
Material of seal:

- 0 = EPDM (Ethylene-Propylene-Diene-Rubber)
- *1 = FKM (Fluor-Rubber)
- **2 = FEP (Tetrafluorethylene-Perfluorpropylene)
- **3 = FFKM (Per-Fluor-Rubber)

PRESSURE LOSS CHARTS

TYPE FMC 100

Values with water at 20 °C
Tolerance ± 5%



TYPE FMC 250

Values with water at 20 °C
Tolerance ± 5%

