

STANDARD POSITION INDICATOR FOR AIR TORQUE ACTUATORS

Upgrade Series (AT045U ÷ AT1001U) AND PT B Series (PT045 B ÷ PT1000 B) D/S

COMPONENTS



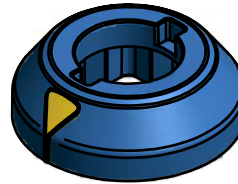
Plastic Cap Screw:
Part. n° ...039.0B : Blue Colour
Part. n° ...039.0N : Black Colour

Standard Position Indicator for models
AT045U ÷ AT101U
PT045 B ÷ PT100 B



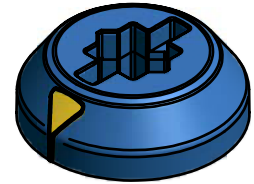
Position Indicator:
Part. n° 05519.1BA : Blue Colour
Part. n° 05519.1NA : Black Colour

Standard Position Indicator for models
AT201U ÷ AT1001U
PT200 B ÷ PT1000 B



Position Indicator:
Part. n° ...519.1BA : Blue Colour
Part. n° ...519.1NA : Black Colour

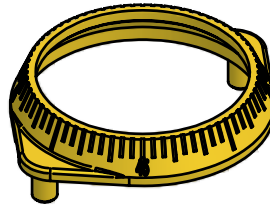
Position Indicator for models
AT051U ÷ AT101U
PT050 B ÷ PT100 B
with S.S. / Integral drive shaft



Position Indicator:
Part. n° 05519.3BA : Blue Colour
Part. n° 05519.3NA : Black Colour

PARTS for Complete Indicator Set

Plastic Cap Screw	Position Indicator	Graduated Ring
1	1	1



Graduated Ring:
Part. n° ...519.0 : Yellow Colour
Part. n° ...519.0B : Blue Colour

Part Number for Complete Indicator Set	Plastic Cap Screw	Position Indicator	Graduated Ring	Actuator Models	Parts Colours
S05519.1BY	05039.0B	05519.1BA	05519.0	AT045U ÷ AT101U / PT045 B ÷ PT100 B	Plastic Cap Screw : Blue Position Indicator : Blue Graduated Ring : Yellow
S05519.3BY	05039.0B	05519.3BA	05519.0	AT051U ÷ AT101U / PT050 B ÷ PT100 B	
S20519.1BY	05039.0B	20519.1BA	05519.0	AT201U ÷ AT301U / PT200 B ÷ PT300 B	
S35519.1BY	35039.0B	35519.1BA	35519.0	AT351U ÷ AT401U / PT300 B ÷ PT400 B	
S45519.1BY	35039.0B	45519.1BA	45519.0	AT451U ÷ AT501U / PT450 B ÷ PT500 B	
S55519.1BY	35039.0B	55519.1BA	55519.0	AT551U ÷ AT601U / PT550 B ÷ PT600 B	
S65519.1BY	35039.0B	65519.1BA	65519.0	AT651U ÷ AT801U / PT650 B ÷ PT800 B	
S100519.1BY	35039.0B	65519.1BA	100519.0	AT1001U / PT1000 B	
S05519.1NY	05039.0N	05519.1NA	05519.0	AT045U ÷ AT101U / PT045 B ÷ PT100 B	Plastic Cap Screw : Black Position Indicator : Black Graduated Ring : Yellow
S05519.3NY	05039.0N	05519.3NA	05519.0	AT051U ÷ AT101U / PT050 B ÷ PT100 B	
S20519.1NY	05039.0N	20519.1NA	05519.0	AT201U ÷ AT301U / PT200 B ÷ PT300 B	
S35519.1NY	35039.0N	35519.1NA	35519.0	AT351U ÷ AT401U / PT300 B ÷ PT400 B	
S45519.1NY	35039.0N	45519.1NA	45519.0	AT451U ÷ AT501U / PT450 B ÷ PT500 B	
S55519.1NY	35039.0N	55519.1NA	55519.0	AT551U ÷ AT601U / PT550 B ÷ PT600 B	
S65519.1NY	35039.0N	65519.1NA	65519.0	AT651U ÷ AT801U / PT650 B ÷ PT800 B	
S100519.1NY	35039.0N	65519.1NA	100519.0	AT1001U / PT1000 B	
S05519.1BB	05039.0B	05519.1BA	05519.0B	AT045U ÷ AT101U / PT045 B ÷ PT100 B	Plastic Cap Screw : Blue Position Indicator : Blue Graduated Ring : Blue
S05519.3BB	05039.0B	05519.3BA	05519.0B	AT051U ÷ AT101U / PT050 B ÷ PT100 B	
S20519.1BB	05039.0B	20519.1BA	05519.0B	AT201U ÷ AT301U / PT200 B ÷ PT300 B	
S35519.1BB	35039.0B	35519.1BA	35519.0B	AT351U ÷ AT401U / PT300 B ÷ PT400 B	
S45519.1BB	35039.0B	45519.1BA	45519.0B	AT451U ÷ AT501U / PT450 B ÷ PT500 B	
S55519.1BB	35039.0B	55519.1BA	55519.0B	AT551U ÷ AT601U / PT550 B ÷ PT600 B	
S65519.1BB	35039.0B	65519.1BA	65519.0B	AT651U ÷ AT801U / PT650 B ÷ PT800 B	
S100519.1BB	35039.0B	65519.1BA	100519.0B	AT1001U / PT1000 B	