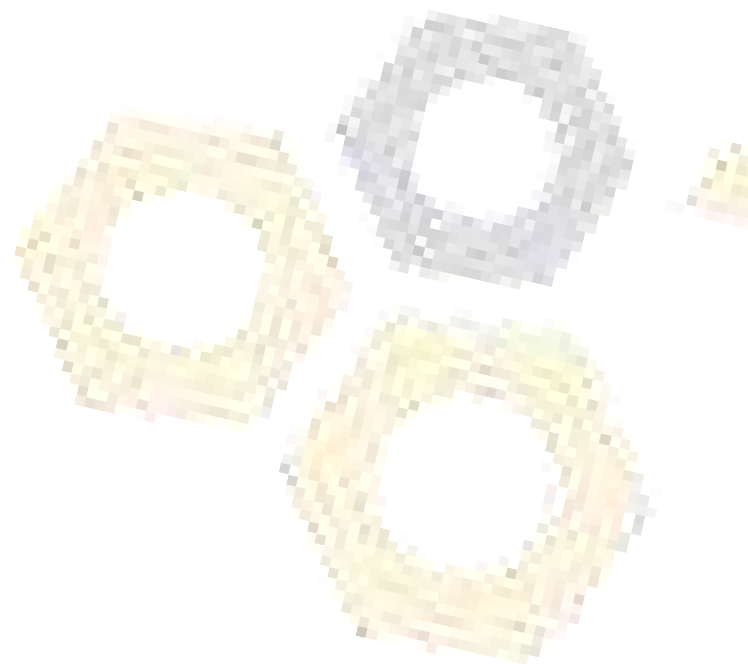




ACCESORIOS PVC



ÍNDICE

Características técnicas	3
Accesorios encolar PVC-U blanco	4
Accesorios encolar	5-12
Bridas y sus accesorios	13 - 17
Accesorios mixtos	18 - 24
Accesorios roscados	25 - 29
Colectores múltiples en PVC-U	30 - 32
Colector 3 vías	33
Tubo flexible	34
Collarines de toma y pinzas en P.P.	35 - 36
Enlaces de 3 piezas	37 - 41
Accesorios electrosoldables	42 - 43

CARACTERÍSTICAS TÉCNICAS DE LOS ACCESORIOS Y VÁLVULAS DE PVC-U

Material:

Cloruro de Polivinilo no plastificado (PVC-U).

Dimensiones:

Cumplen la norma UNE-EN-ISO-1452.

Condiciones de trabajo:

- En accesorios para encolar:
 - Desde 16 mm. hasta 140 mm. = PN 16 bar a 20°C.
 - Desde 160 mm. hasta 315 mm. = PN 10 bar a 20°C.
- En accesorios para roscar:
 - Todas las medidas son PN 10 bar a 20°C.

Ensayos hidráulicos:

Según norma UNE-EN 917.

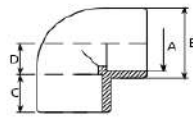
Montaje:

- Para uniones roscadas, recomendamos utilizar cinta de P.T.F.E.
- Para uniones encoladas, se recomienda adhesivo a base de ciclohexanona (adhesivo CH).



ACCESORIOS PRESION DE PVC-U BLANCO PARA ENCOLAR
WHITE PVC-U PRESSURE SOLVENT FITTINGS
RACCORDS PVC-U BLANC À COLLER

Codo 90°
Elbow 90°
Coude à 90°

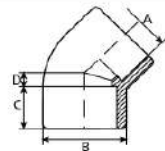


A	B	C	D	DN	Kg.
16	25	14	9	10	0,010
20	27	16	12	15	0,015
25	32	19	14	20	0,030



CODIGO	Ø TUBO	Und./c Pcs/Box
7001016	16	100 A
7001020	20	50 A
7001025	25	75 B

Codo 45°
Elbow 45°
Coude à 45°

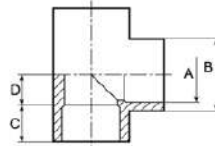


A	B	C	D	DN	Kg.
16	25	14	5	10	0,009
20	27	16	5	15	0,015
25	32	19	6	20	0,024



CODIGO	Ø TUBO	Und./c Pcs/Box
7002016	16	100 A
7002020	20	60 A
7002025	25	80 B

Te a 90°
Tee 90°
Té à 90°

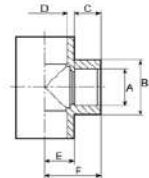


A	B	C	D	DN	Kg.
16	25	14	11	10	0,014
20	25	16	11	15	0,024
25	32	19	14	20	0,037



CODIGO	Ø TUBO	Und./c Pcs/Box
7003016	16	60 A
7003020	20	30 A
7003025	25	45 B

Te reducida 90°
Reducing tee 90°
Té à 90° réduit

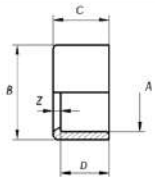


A	B	C	D	E	F	DN	Kg.
16	25	14	20	13	27	15-10	0,025
16	32	14	25	19	33	20-10	0,043
20	32	16	25	19	35	20-15	0,044



CODIGO	Ø TUBO	Und./c Pcs/Box
7004020	20-16	30 A
7004025	25-16	45 B
7004026	25-20	45 B

Casquillo reducido
Reducing socket
Manchon simple reduction

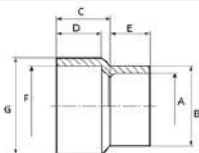


A	B	C	D	Z	DN	Kg.
16	20	16	14	2	10	0,003
16	25	19	14	5	10	0,007
20	25	19	16	3	15	0,005



CODIGO	Ø TUBO	Und./c Pcs/Box
7006020	20-16	100 A
7006025	25-16	100 A
7006026	25-20	100 B

Reducción cónica
Conical reducing
Manchon double reduction

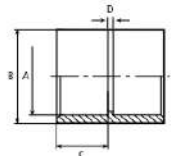


B	C	D	E	DN	Kg.
20	25	19	14	10	0,007



CODIGO	Ø TUBO GxFA	Und./c Pcs/Box
7008025	25-20x16	100 A

Manguito unión
Socket
Manchon

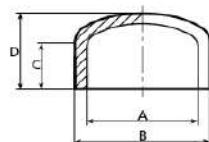


A	B	C	D	DN	Kg.
16	27	14	3	10	0,007
20	27	16	3	15	0,012
25	33	19	3	20	0,020



CODIGO	Ø TUBO	Und./c Pcs/Box
7005016	16	80 A
7005020	20	60 A
7005025	25	40 A

Tapón
Cap
Bouchon

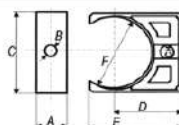


A	B	C	D	Kg.
16	20	14	20	0,003
20	25	16	25	0,007
25	32	19	29	0,013



CODIGO	Ø TUBO	Und./c Pcs/Box
7007016	16	100 A
7007020	20	100 A
7007025	25	75 A

Pinzas abiertas
Open pipe clips
Colliers de fixation



A	B	C	D	E	F
16	5	33	26	34	20
16	5	38	30	40	25

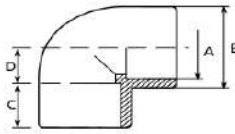


CODIGO	Ø TUBO	Und./c Pcs/Box
7028020	20	500 C
7028025	25	400 C



ACCESORIOS PRESION EN PVC-U PARA ENCOLAR
PVC-U PRESSURE SOLVENT SOCKET FITTINGS
RACCORDS PVC-U PRESSION A COLLER

Codo 90°
Elbow 90°
Coude à 90°



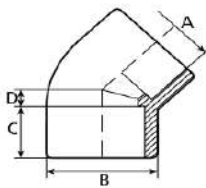
DN	A	B	C	D	Kg.
10	16	22	14	9	0,010
15	20	27	16	10	0,015
20	25	32	19	14,75	0,030
25	32	40	22	18,5	0,048
32	40	50	26	23	0,085
40	50	62	31	27	0,141
50	63	75	38	32,5	0,224
65	75	90	44	40	0,387
80	90	110	51	48	0,729
100	110	131	61	58	1,192
110	125	148	69	67	1,630
125	140	164	76	71	2,094
150	160	180	86	81	2,355
175	200	225	106	101	4,220
200	225	252	119	113,5	6,585
225	250	284	131	126	7,795
• 300	-	-	-	-	-
• 400	-	-	-	-	-



CODIGO	TUBO Ø	Ung./ Pcs./Box
7101016	16	100 A
7101020	20	50 A
7101025	25	75 B
7101032	32	90 C
7101040	40	100 D
7101050	50	100 H
7101063	63	60 H
7101075	75	38 H
7101090	90	20 H
7101110	110	12 H
7101125	125	8 H
7101140	140	6 H
7101160	160	4 H
7101200	200	3 K
7101225	225	2 K
7101250	250	1 K
** 7101315	315	1
* 7101400	400	-

• Consultar medidas
 * PN 5 bar
 ** PN 8 bar

Codo 45°
Elbow 45°
Coude à 45°



DN	A	B	C	D	Kg.
10	16	25	14	7	0,009
15	20	27	16	5	0,015
20	25	32	19	6	0,024
25	32	40	22	7,5	0,040
32	40	50	26	9,5	0,073
40	50	63	31	11,5	0,135
50	63	75	38	14	0,189
65	75	90	44	16,5	0,332
80	90	110	51	19,5	0,628
100	110	131	61	23	0,880
110	125	148	69	27	1,210
125	140	163	76	30	1,610
150	160	180	86	34	1,718
175	200	225	106	42	3,185
200	225	252	119	48	5,836
225	250	284	131	53,5	6,100
• 300	-	-	-	-	-
• 400	-	-	-	-	-

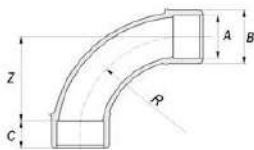


CODIGO	TUBO Ø	Ung./ Pcs./Box
7102016	16	100 A
7102020	20	60 A
7102025	25	80 B
7102032	32	100 C
7102040	40	120 D
7102050	50	120 H
7102063	63	60 H
7102075	75	40 H
7102090	90	26 H
7102110	110	16 H
7102125	125	8 H
7102140	140	6 H
7102160	160	5 H
7102200	200	4 K
7102225	225	2 H
7102250	250	2 K
** 7102315	315	1 K
* 7102400	400	-

• Consultar medidas
 * PN 5 bar
 ** PN 8 bar

ACCESORIOS PRESION EN PVC-U PARA ENCOLAR
PVC-U PRESSURE SOLVENT SOCKET FITTINGS
RACCORDS PVC-U PRESSION À COLLER

Curva 90°
90° Bend
Courbe 90°



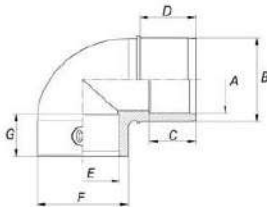
DN	A	B	C	R	Z	PN	Kg.
15	20	27	16	-	40	16	0,033
20	25	33	19	-	50	16	0,054
25	32	41	22	-	64	16	0,092
32	40	50	26	-	80	16	0,164
40	50	63	32	-	100	16	0,295
50	63	75	38	-	127	16	0,493
65	75	90	44	-	150	16	0,895
• 80	-	-	-	-	-	16	-
• 100	-	-	-	-	-	16	-
• 110	-	-	-	-	-	10	-
• 125	-	-	-	-	-	10	-
• 150	-	-	-	-	-	10	-
• 175	-	-	-	-	-	4	-
• 200	-	-	-	-	-	4	-
• 225	-	-	-	-	-	4	-
• 300	-	-	-	-	-	4	-
• 353	-	-	-	-	-	4	-



CODIGO	TUBO Ø	Urd/c Pcs/Box
7110020	20	70 B
7110025	25	90 C
7110032	32	50 C
7110040	40	50 D
7110050	50	25 N
7110063	63	25 H
7110075	75	10 U
7110090	90	-
7110110	110	-
7110125	125	-
7110140	140	-
7110160	160	-
7110200	200	-
7110225	225	-
7110250	250	-
7110315	315	-
7110400	400	-

• Consultar medidas

Codo 90° liso H/M
Elbow 90° F/M
Coude à 90° F/M

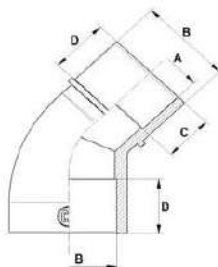


DN	A	B	C	D	E	F	G	Kg.
32	40	50	26	31	50	62	31	0,134
40	50	63	32	38	50	62	32	0,197
50	50	63	31	38	63	76	38	0,256



CODIGO	TUBO Ø	Urd/c Pcs/Box
7101550	40-50-50	120 H
7101551	50-63-50	100 H
7101563	50-63-63	70 H

Codo 45° liso H/M
Elbow 45° F/M
Coude à 45° F/M



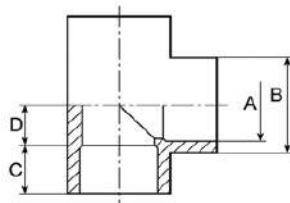
DN	A	B	C	D	Kg.
32	40	50	26	31	0,128
40	50	63	31	38	0,211



CODIGO	TUBO Ø	Urd/c Pcs/Box
7102550	40-50	120 H
7101551	50-63	60 H

ACCESORIOS PRESION EN PVC-U PARA ENCOLAR
PVC-U PRESSURE SOLVENT SOCKET FITTINGS
RACCORDS PVC-U PRESSION À COLLER

Te 90°
Tee 90°
Té à 90°



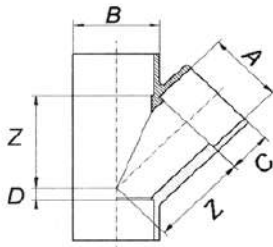
DN	A	B	C	D	Kg.
10	16	25	14	11	0,014
15	20	25	16	11	0,024
20	25	32	19	14	0,037
25	32	40	22	17	0,061
32	40	50	26	21	0,119
40	50	63	31	26	0,225
50	63	75	38	32	0,313
65	75	90	44	39	0,560
80	90	110	51	47	1,022
100	110	131	61	53	1,518
110	125	148	69	65	2,100
125	140	163	76	71	2,660
150	160	180	86	81	2,941
175	200	223	106	101	5,185
200	225	252	119	113,5	8,530
225	250	284	131	126	9,850
• 300	-	-	-	-	-
• 400	-	-	-	-	-



CODIGO	TUBO Ø	Und/c Pcs/Box
7103016	16	60 A
7103020	20	30 A
7103025	25	45 B
7103032	32	60 C
7103040	40	68 D
7103050	50	76 H
7103063	63	45 H
7103075	75	27 H
7103090	90	14 H
7103110	110	9 H
7103125	125	6 H
7103140	140	4 H
7103160	160	3 H
7103200	200	2 K
7103225	225	1 H
7103250	250	1 K
7103315	315	1
* 7103400	400	-

• Consultar medidas
 * PN 4 bar

Te 45°
45° Tee
Té à 45°



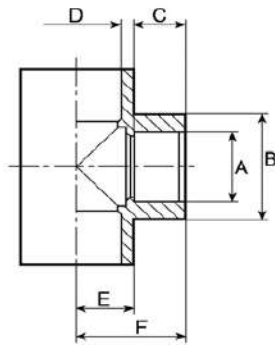
DN	A	B	C	D	Z	Kg.
15	20	28	16	7	29	0,039
20	25	33	19	8	35	0,058
25	32	42	22	9	45	0,111
32	40	51	26	10	55	0,182
* 40	50	61	32	12	68	0,279
* 50	63	76	38	15	85	0,491
* 65	75	91	44	18	102	0,881
* 80	90	107	51	22	122	1,307
* 100	110	134	61	26	149	2,661



CODIGO	TUBO Ø	Und/c Pcs/Box
7111020	20	25 A
7111025	25	40 B
7111032	32	42 C
7111040	40	50 D
* 7111050	50	54 H
* 7111063	63	30 H
* 7111075	75	16 H
* 7111090	90	10 H
* 7111110	110	8 K

* PN 10 bar

Te reducida 90°
Reducing tee 90°
Té à 90° réduit

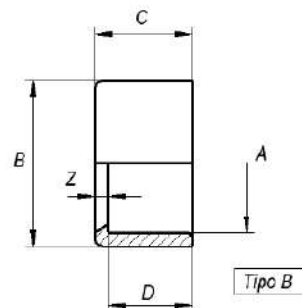
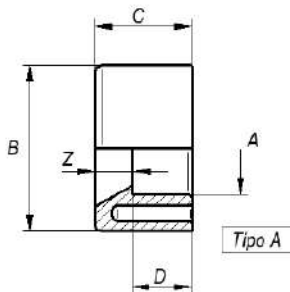


DN	A	B	C	D	E	F	Kg
15-10	16	25	14	20	13	27	0,025
20-10	16	32	14	25	19	33	0,043
20-15	20	32	16	25	19	35	0,044
25-15	20	40	16	32	23	39	0,067
25-20	25	40	19	32	20	39	0,072
32-15	20	50	16	40	33	49	0,134
32-20	25	50	19	40	30	49	0,135
32-25	32	50	22	40	27	49	0,141
40-15	20	63	16	50	43	59	0,248
40-20	25	63	19	50	40	59	0,256
40-25	32	63	22	50	37	59	0,260
40-32	40	63	26	50	33	59	0,264
50-15	20	75	16	63	56	72	0,368
50-20	25	75	19	63	53	72	0,372
50-25	32	75	22	63	50	72	0,362
50-32	40	75	26	63	46	72	0,365
50-40	50	75	31	63	51	72	0,382
65-25	32	90	22	75	62	84	0,560
65-32	40	90	26	75	58	84	0,660
65-40	50	90	31	75	53	84	0,675
65-50	63	90	38	75	46	84	0,556
80-32	40	110	26	90	73	99	1,167
80-40	50	110	31	90	68	99	1,190
80-50	63	110	38	90	61	99	1,158
80-65	75	110	44	90	55	99	1,203
100-40	50	131	31	110	88	119	1,344
100-50	63	131	38	110	81	119	1,720
100-65	75	131	44	110	75	119	1,738
100-80	90	131	51	110	68	119	1,830
110-50	63	148	38	125	94	132	2,353
110-65	75	148	44	125	88	132	2,380
110-80	90	148	51	125	81	132	2,430
110-100	110	148	61	125	71	132	2,158
125-65	75	163	44	140	102	146	2,323
125-80	90	163	51	140	95	146	3,189
125-100	110	163	61	140	85	146	3,093
125-110	125	163	69	140	77	146	3,120
150-80	90	180	51	160	115	166	3,598
150-100	110	180	61	160	105	166	3,369
150-110	125	180	69	160	97	166	3,400
150-125	140	180	76	160	90	166	3,550
175-150	160	223	86	200	120	206	6,120
175-160	180	223	96	200	110	206	6,280
200-175	200	252	106	225	157	263	9,940
225-175	200	284	106	250	151	257	11,615
225-200	225	284	119	250	158	277	11,895
300-200	225	369	119	315	204	323	28,280
300-225	250	369	131	315	192	323	28,500



CODIGO	TUBO Ø	Urd/c fcs Box
7104020	20-16	30 A
7104025	25-16	45 B
7104026	25-20	45 B
7104032	32-20	60 C
7104033	32-25	60 C
7104040	40-20	68 D
7104041	40-25	68 D
7104042	40-32	68 D
7104050	50-20	76 H
7104051	50-25	76 H
7104052	50-32	76 H
7104053	50-40	76 H
7104061	63-20	45 H
7104062	63-25	45 H
7104063	63-32	45 H
7104064	63-40	45 H
7104065	63-50	45 H
7104072	75-32	27 H
7104073	75-40	27 H
7104074	75-50	27 H
7104075	75-63	27 H
7104087	90-40	14 H
7104088	90-50	14 H
7104089	90-63	14 H
7104090	90-75	14 H
7104107	110-50	9 H
7104108	110-63	9 H
7104109	110-75	9 H
7104110	110-90	9 H
7104122	125-63	6 H
7104123	125-75	6 H
7104124	125-90	6 H
7104125	125-110	6 H
7104137	140-75	4 H
7104138	140-90	4 H
7104139	140-110	4 H
7104140	140-125	4 H
7104157	160-90	3 H
7104158	160-110	3 H
7104159	160-125	3 H
7104160	160-140	3 H
7104200	200-160	2 K
7104201	200-180	2 K
7104225	225-200	1 H
7104250	250-200	1 K
7104251	250-225	1 K
7104315	315-225	1
7104316	315-250	1

Casquillo reducido
Reducing socket
Manchon simple reduction



DN	A	B	C	D	Z	Kg.
10	16	20	16	14	2	0,003
10	16	25	19	14	5	0,007
15	20	25	19	16	3	0,005
15	20	32	22	16	6	0,014
20	25	32	22	19	3	0,009
15	20	40	26	16	10	0,023
20	25	40	26	19	7	0,022
25	32	40	26	22	4	0,016
15	20	50	31	16	15	0,051
20	25	50	31	19	12	0,044
25	32	50	31	22	9	0,038
32	40	50	31	26	5	0,030
25	32	63	38	22	16	0,080
32	40	63	38	26	12	0,073
40	50	63	38	31	7	0,060
32	40	75	44	26	18	0,098
40	50	75	44	31	13	0,104
50	63	75	44	38	6	0,079
40	50	90	51	31	20	0,189
50	63	90	51	38	13	0,171
65	75	90	51	44	7	0,137
50	63	110	61	38	23	0,422
65	75	110	61	44	17	0,315
80	90	110	61	51	10	0,257
65	75	125	69	44	25	0,408
80	90	125	69	51	18	0,440
100	110	125	69	61	8	0,276
100	110	140	77	61	16	0,490
110	125	140	77	69	8	0,348
80	90	160	86	51	35	0,753
100	110	160	86	61	25	0,724
125	125	160	86	69	17	0,726
125	140	160	86	76	10	0,574
100	110	200	106	61	45	1,893
110	125	200	106	69	37	1,811
150	160	200	106	86	20	1,100
160	180	200	106	96	10	1,420
175	160	225	119	106	13	2,015
175	200	225	119	106	13	1,670
150	160	250	131	86	45	2,475
175	200	250	131	106	25	1,406
200	225	250	131	119	12	1,770
175	200	315	164	107	57	6,074
200	225	315	164	119	45	4,921
225	250	315	164	119	33	5,080
300	315	400	206	163	42	10,200



Tipo A
(vaciado con nervios)

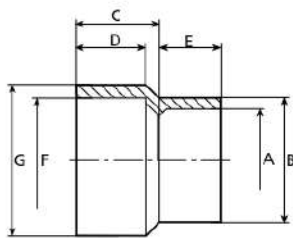


Tipo B
(macizo)

TIPO	CODIGO	TUBO Ø	Und/c Pcs/Box
B	7106020	20-16	100 A
B	7106025	25-16	100 A
B	7106026	25-20	100 A
A	7106032	32-20	80 A
B	7106033	32-25	80 A
A	7106040	40-20	100 B
A	7106041	40-25	100 B
B	7106042	40-32	100 B
A	7106050	50-20	75 B
A	7106051	50-25	75 B
A	7106052	50-32	75 B
B	7106053	50-40	75 B
A	7106063	63-32	90 C
A	7106064	63-40	90 C
B	7106065	63-50	90 C
A	7106073	75-40	50 C
A	7106074	75-50	50 C
B	7106075	75-63	50 C
A	7106088	90-50	30 C
A	7106089	90-63	30 C
B	7106090	90-75	30 C
A	7106108	110-63	15 C
A	7106109	110-75	15 C
B	7106110	110-90	15 C
A	7106123	125-75	12 C
A	7106124	125-90	12 C
B	7106125	125-110	12 C
A	7106139	140-110	17 D
B	7106140	140-125	17 D
A	7106157	160-90	10 D
A	7106158	160-110	10 D
A	7106159	160-125	10 D
B	7106160	160-140	10 D
A	7106202	200-110	10 H
A	7106203	200-125	10 H
A	7106200	200-160	10 H
B	7106201	200-180	10 H
A	7106222	225-160	7 H
B	7106225	225-200	7 H
A	7106249	250-160	6 H
A	7106250	250-200	6 H
B	7106251	250-225	6 H
A	7106314	315-200	4 K
A	7106315	315-225	4 K
A	7106316	315-250	4 K
*	A	7106400	400-315 -

* PN 4 bar
(vaciado pero sin nervios)

Reducción cónica
Conical reducing
Manchon double reduction



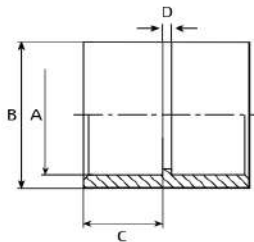
DN	B	C	D	E	Kg.
10	20	25	19	14	0,007
15	25	30	22	16	0,016
15	27	36	26	16	0,025
20	32	36	26	19	0,029
15	27	44	31	16	0,042
20	33	44	31	19	0,047
25	40	44	31	22	0,054
15	27	54	38	16	0,077
20	33	54	38	19	0,085
25	41	54	38	22	0,092
32	50	54	38	26	0,105
40	61	54	38	32	0,126
25	41	62	44	22	0,116
32	50	62	44	26	0,130
40	63	62	44	31	0,153
32	50	74	51	26	0,205
40	61	74	51	31	0,231
50	75	74	51	38	0,254
40	61	88	61	31	0,395
50	75	88	61	38	0,411
65	90	88	61	44	0,471
50	75	100	69	38	0,426
65	90	100	69	44	0,490
80	105	100	69	51	0,554
65	90	111	76	44	0,583
80	105	111	76	51	0,643
100	130	111	76	61	0,835
50	74	126	86	38	0,894
65	89	126	86	44	0,908
80	105	126	86	51	0,932
100	130	126	86	61	1,119
110	148	126	86	69	1,319
100	130	154	106	61	1,505
110	148	154	106	69	1,671
125	164	154	106	76	2,130
110	148	171	119	69	2,313
125	160	171	119	76	2,328
150	180	171	119	86	2,458
125	157	194	131	76	2,675
150	180	194	131	86	2,998
175	225	194	131	106	3,635
150	180	233	164	86	5,479
175	225	233	164	106	6,185



CODIGO	TUBO Ø G - F x A	Urd/c Pcs/Box
7108025	25 - 20 x 16	100 A
7108032	32 - 25 x 20	50 A
7108039	40 - 32 x 20	90 B
7108040	40 - 32 x 25	90 B
7108048	50 - 40 x 20	100 C
7108049	50 - 40 x 25	100 C
7108050	50 - 40 x 32	100 C
7108060	63 - 50 x 20	64 C
7108061	63 - 50 x 25	64 C
7108062	63 - 50 x 32	64 C
7108063	63 - 50 x 40	60 C
7108064	63 - 50 x 50	40 C
7108073	75 - 63 x 32	84 D
7108074	75 - 63 x 40	84 D
7108075	75 - 63 x 50	80 D
7108088	90 - 75 x 40	45 D
7108089	90 - 75 x 50	45 D
7108090	90 - 75 x 63	45 D
7108108	110 - 90 x 50	24 D
7108109	110 - 90 x 63	24 D
7108110	110 - 90 x 75	20 D
7108123	125 - 110 x 63	36 H
7108124	125 - 110 x 75	36 H
7108125	125 - 110 x 90	30 H
7108138	140 - 125 x 75	22 H
7108139	140 - 125 x 90	22 H
7108140	140 - 125 x 110	16 H
7108156	160 - 140 x 63	15 H
7108157	160 - 140 x 75	15 H
7108158	160 - 140 x 90	15 H
7108159	160 - 140 x 110	12 H
7108160	160 - 140 x 125	9 H
7108198	200 - 180 x 110	6 H
7108201	200 - 180 x 125	6 H
7108200	200 - 180 x 140	6 H
7108225	225 - 200 x 125	3 H
7108226	225 - 200 x 140	3 H
7108227	225 - 200 x 160	3 H
7108249	250 - 225 x 140	4 K
7108250	250 - 225 x 160	4 K
7108251	250 - 225 x 200	4 K
7108315	315 - 280 x 160	2 K
7108316	315 - 280 x 200	2 K

ACCESORIOS PRESION EN PVC-U PARA ENCOLAR
PVC-U PRESSURE SOLVENT SOCKET FITTINGS
RACCORDS PVC-U PRESSION À COLLER

Manguito unión
Socket
Manchon



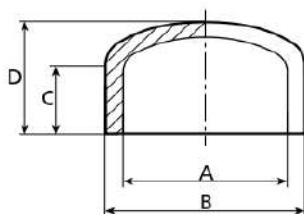
DN	A	B	C	D	Kg.
10	16	27	14	3	0,007
15	20	27	16	3	0,012
20	25	33	19	3	0,020
25	32	41	22	3	0,034
32	40	50	26	3	0,054
40	50	61	31	3	0,087
50	63	75	38	3	0,142
65	75	90	44	4	0,242
80	90	108	51	5	0,408
100	110	131	61	6	0,711
110	125	148	69	7	0,966
125	140	164	76	9	1,262
150	160	180	86	9	1,354
175	200	225	106	10	2,515
200	225	252	119	10	3,385
225	250	280	131	12	4,640
300	315	352	164	12	8,845
400	400	432	206	12	12,900



CODIGO	TUBO Ø	Und/c Pcs/Box
7105016	16	80 A
7105020	20	60 A
7105025	25	40 A
7105032	32	60 B
7105040	40	84 C
7105050	50	100 D
7105063	63	60 D
7105075	75	36 D
7105090	90	18 D
7105110	110	12 D
7105125	125	16 H
7105140	140	9 H
7105160	160	6 H
7105200	200	3 H
7105225	225	2 H
7105250	250	2 K
7105315	315	1 K
* 7105400	400	-

* PN 4 bar

Tapón
Cap
Bouchon



A	B	C	D	Kg.
16	20	14	20	0,003
20	25	16	25	0,007
25	32	19	29	0,013
32	40	22	32	0,023
40	50	26	39	0,041
50	63	31	47	0,082
63	75	38	59	0,111
75	90	44	61	0,199
90	110	51	75	0,359
110	131	61	91	0,537
125	150	69	102	0,824
140	167	76	111	1,092
160	185	86	123	1,253
200	226	106	150	1,934
225	252	119	175	2,441
250	280	131	186	3,576
315	352	164	226	6,725

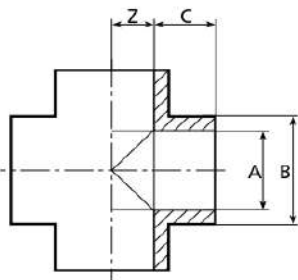


CODIGO	TUBO Ø	Und/c Pcs/Box
7107016	16	100 A
7107020	20	100 A
7107025	25	75 A
7107032	32	100 B
7107040	40	70 B
7107050	50	80 C
7107063	63	50 C
7107075	75	24 C
7107090	90	15 C
7107110	110	11 C
7107125	125	12 D
7107140	140	9 D
7107160	160	12 H
7107200	200	7 H
7107225	225	6 H
7107250	250	4 K
7107315	315	1 R



ACCESORIOS PRESION EN PVC-U PARA ENCOLAR
PVC-U PRESSURE SOLVENT SOCKET FITTINGS
RACCORDS PVC-U PRESSION À COLLER

Cruz
Cross
Croix



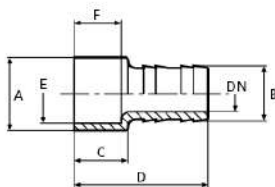
DN	A	B	C	Z	Kg.
15	20	29	17	12	0,038
20	25	35	19	14,5	0,060
25	32	43	22	18	0,099
32	40	52	27	23	0,169
40	50	61	31	26	0,220
50	63	76	38	32,5	0,399
*	-	-	-	-	-
*	-	-	-	-	-
*	-	-	-	-	-



CODIGO	TUBO Ø	Urd/c Pcs. Box
7109020	20	60 B
7109025	25	70 C
7109032	32	90 D
7109040	40	50 D
7109050	50	60 H
7109063	63	30 H
* 7109075	75	-
* 7109090	90	-
* 7109110	110	-

* Consultar medidas

Espiga conexión lisa
Spigot connection solvent socket
Raccord cannelé à coller

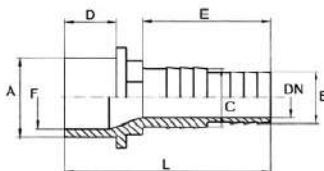


DN	A	B	C	D	E	F	Kg.
10	16	16	15	60	10	-	0,011
15	20	18	17	62	11	-	0,015
15	20	20	17	65	13	-	0,015
20	25	25	19	71	18	-	0,022
25	32	30	22	80	25	19	0,035
32	40	40	27	91	32	28	0,070
25	50	38	35	88	40	30	0,076
40	50	50	32	102	40	28	0,115
50	63	60	38	109	50	32	0,150



CODIGO	TUBO Ø E - B	Urd/c Pcs. Box
7133016	16-16	200 B
7133020	20-18	150 B
7133021	20-20	150 B
7133025	25-25	100 B
7133032	32-30	100 C
7133040	40-40	60 C
7133050	50-38	60 C
7133051	50-50	80 D
7133063	63-60	50 D

Espiga encolar larga
Long spigot solvent socket
Longue raccord cannelé à coller

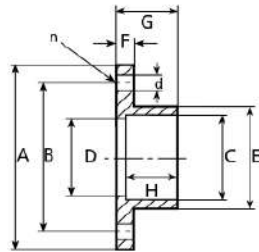


DN	A	B	C	D	E	F	L	Kg.
25	50	32	38	31	76	40	122,5	0,101



CODIGO	TUBO Ø C - A	Urd/c Pcs. Box
7135050	38-50	45 C

Brida fija
Fixed flange
Bride fixe

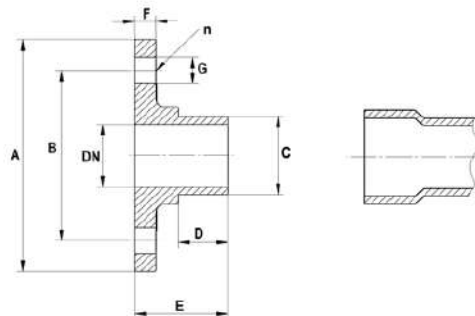


DN	A	B	C	D	E	F	G	H	n	d	Kg.
65	185	145	75	65	90	18	50	44	4	17	0,602
80	200	160	90	80	110	20	55	51	8	17	0,728
100	220	180	110	100	130	21	70	61	8	17	0,979
110	230	190	125	121	144	22	80	69	8	17	1,039
* 110	250	210	125	121	144	22	80	69	8	17	1,372
125	250	210	140	126	160	22	100	84	8	17	1,455
150	285	240	160	150	180	22	96	86	8	22	1,839
175	340	295	200	196	230	22	108	106	8	22	2,811
200	340	295	225	217	248	34	126	119	8	22	3,300
225	400	350	250	244	281	31	145	130	12	22	4,908

CODIGO	TUBO Ø	Und/c Pa/Box
7122075	75	34 H
7122090	90	26 H
7122110	110	18 H
7122125	125	12 H
* 7122126	125	12 H
7122140	140	10 H
7122160	160	10 K
7122200	200	6 K
7122225	225	-
7122250	250	2 I

* Brida para válvulas mariposa wafer.
n = nº de agujeros

Brida fija macho
Male fixed flange
Bride fixe mâle

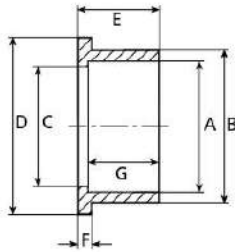


DN	A	B	C	D	E	F	G	n	Kg.
15	97	65	20	15	30	10	14	4	0,111
20	106	75	25	17	38	15	14	4	0,168
25	116	85	32	21	39	15	14	4	0,209
32	140	100	40	25	48	15	17	4	0,316
40	149	110	50	30	55	13	17	4	0,350
50	164	125	63	37	63	15	17	4	0,484
65	185	145	75	43	72	17	17	4	0,642
80	200	160	90	50	79	19	17	8	0,778
100	221	180	110	58	92	19	17	8	0,958

CODIGO	TUBO Ø
7120020	20
7120025	25
7120032	32
7120040	40
7120050	50
7120063	63
7120075	75
7120090	90
7120110	110

n = nº de agujeros

Manguito portabridas
Flange adaptor
Collet à joint plat



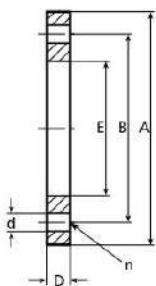
DN	A	B	C	D	E	F	G	Kg.
15	20	27	15	34	19	6	16	0,010
20	25	33	20	41	22	7	19	0,015
25	32	41	25	50	25	7	22	0,023
32	40	50	36	61	29	8	26	0,044
40	50	61	40	73	34	8	31	0,075
50	63	76	50	90	41	9	38	0,116
65	75	90	67	114	50	10	44	0,192
80	90	110	81	130	60	11	51	0,313
100	110	130	103	150	67	12	61	0,454
110	125	147	119	170	75	13	69	0,583
125	140	165	132	188	80	14	76	0,786
150	160	188	150	213	90	16	86	1,097
175	200	231	196	255	112	19	104	1,861
200	225	248	200	274	125	25	119	1,878
225	250	282	244	328	140	25	131	3,275
300	315	342	300	378	173	30	164	4,105
• 400								
• 500								



CODIGO	TUBO Ø	Und/c. Pcs/Box
7121020	20	200 B
7121025	25	150 B
7121032	32	90 B
7121040	40	54 B
7121050	50	30 B
* 7121063	63	44 C
* 7121075	75	21 C
* 7121090	90	30 D
7121110	110	20 D
7121125	125	24 H
7121140	140	18 H
7121160	160	12 H
7121200	200	7 H
7121225	225	6 H
7121250	250	4 K
7121315	315	2 K
7121400	400	-
7121500	500	-

* Disponible en Ansi - Available in Ansi
 • PN 4 bar

Brida libre
Backing ring
Bride libre



DN	A	B	D	E	n	d	Kg.
15	95	65	12	28	4	14	0,070
20	105	75	13	34	4	14	0,092
25	115	85	15	42	4	14	0,125
32	140	100	15	51	4	17	0,197
40	150	110	16	62	4	17	0,285
50	165	125	19	78	4	17	0,315
65	185	145	20	92	4	18	0,410
80	200	160	20	112	8	18	0,450
100	220	180	22	131	8	17	0,548
125	230	190	25	148	8	18	0,811
* 125	250	210	24	148	8	17	0,825
125	250	210	24	166	8	17	0,703
150	285	240	24	188	8	22	0,919
200	340	295	26	235	8	22	1,252
200	340	295	32	250	8	22	1,396
250	399	350	32	285	12	22	2,028
300	450	400	34	345	12	22	2,309
• 400							
• 500							



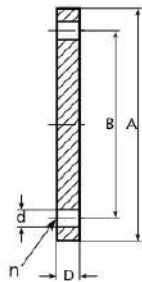
CODIGO	TUBO Ø	Und/c. Pcs/Box
7123020	20	60 B
7123025	25	45 B
7123032	32	62 C
7123040	40	44 C
7123050	50	30 C
7123063	63	20 C
7123075	75	36 D
7123090	90	32 D
7123110	110	22 D
7123125	125	18 D
* 7123126	125	18 D
7123140	140	18 D
7123160	160	12 D
7123200	200	9 R
7123225	225	7 R
7123250	250	9 S
7123315	315	7 J
7123400	400	-
7123500	500	-

* Brida para válvulas mariposa wafer.
 • PN 4 bar
 n = nº de agujeros



BRIDAS DE PVC-U Y SUS ACCESORIOS
PVC-U FLANGES & ADAPTORS
SYSTEMES DE BRIDES EN PVC-U

Brida ciega
Blank flange
Bride d'obturation



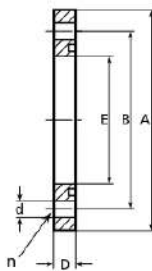
A	B	D	n	d	Kg.
95	65	12	4	14	0,084
105	75	13	4	14	0,109
115	85	15	4	14	0,146
140	100	15	4	17	0,224
150	110	19	4	17	0,352
165	125	19	4	19	0,434
187	145	19	4	19	0,726
202,5	160	20	8	19	0,837
222	180	22	8	19	1,066
232	190	24	8	19	1,280
253	210	26	8	19	1,645
288,5	240	28	8	23	2,337
345	295	30	8	23	3,534
*	-	-	-	-	-
*	-	-	-	-	-

* Consultar medidas
n = nº de agujeros



TIPO	CODIGO	TUBO Ø	Und/c Pcs/Box
A	7124020	20	56 B
A	7124025	25	44 B
A	7124032	32	18 B
A	7124040	40	48 C
A	7124050	50	30 C
A	7124063	63	20 C
B	7124075	75	36 D
B	7124090	90	32 D
B	7124110	110	22 D
B	7124125	125	18 D
B	7124140	140	18 D
B	7124160	160	10 D
B	7124200	200	8 R
*	7124250	250	-
*	7124315	315	-

Brida libre en P. P.
P. P. backing ring
Bride libre en P. P.



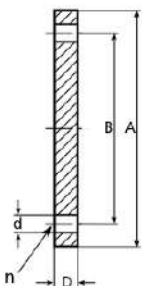
A	B	D	E	n	d	Kg.
95	65	12	28	4	14	0,050
105	75	13	34	4	14	0,064
115	85	15	42	4	14	0,128
140	100	15	51	4	17	0,136
150	110	16	62	4	18	0,174
164	125	18	78	4	18	0,200
185	145	19	92	4	18	0,310
200	160	20	112	8	18	0,332
219	180	22	131	8	19	0,350
229	190	24	149	8	19	0,416
* 250	210	24	149	8	19	0,635
252	210	26	167	8	19	0,521
283	240	28	188	8	22	0,713
340	295	30	235	8	22	1,000

* Brida para válvulas mariposa wafer.
n = nº de agujeros



CODIGO	TUBO Ø	Und/c Pcs/Box
7125020	20	56 B
7125025	25	35 B
7125032	32	24 B
7125040	40	40 C
7125050	50	30 C
7125063	63	20 C
7125075	75	36 D
7125090	90	32 D
7125110	110	22 D
7125125	125	18 D
* 7125126	125	18 D
7125140	140	18 D
7125160	160	12 D
7125200	200	8 R

Brida ciega en P. P.
P. P. blank flange
Bride d'obturation en P. P.



A	B	D	n	d	Kg.
93	65	12	4	14	0,051
104	75	13	4	14	0,070
114	85	15	4	14	0,096
138	100	15	4	17	0,150
146	110	19	4	18	0,214
162	125	19	4	18	0,260
185	145	18	4	18	0,400
200	160	20	8	18	0,477
220	180	18	8	18	0,586
230	190	24	8	18	0,723
250	210	23	8	18	0,911
285	240	28	8	22	1,241
315	295	24	8	22	1,840

n = nº de agujeros



TIPO	CODIGO	TUBO Ø	Und/c Pcs/Box
A	7126020	20	56 B
A	7126025	25	35 B
A	7126032	32	24 B
A	7126040	40	40 C
A	7126050	50	30 C
A	7126063	63	20 C
B	7126075	75	36 D
B	7126090	90	32 D
B	7126110	110	22 D
B	7126125	125	18 D
B	7126140	140	18 D
B	7126160	160	10 R
B	7126200	200	8 R

Visor en PVC-U con enlaces PN-10
PVC-U-sight glass with NP-10 unions
Controlleur de circulation avec raccords union PN-10

DN	A	B	C	D	E	Kg
10	16	70	130	164	49	0,118
15	20	70	131	165	49	0,114
20	25	70	135	173	57	0,163
25	32	70	149	193	67	0,254
32	40	70	151	204	81	0,400
40	50	70	169	234	98	0,655
50	63	70	174	251	112	0,942
65	75	110	265	356	154	2,181
80	90	105	265	356	154	2,396
100	110	100	247	370	178	2,979

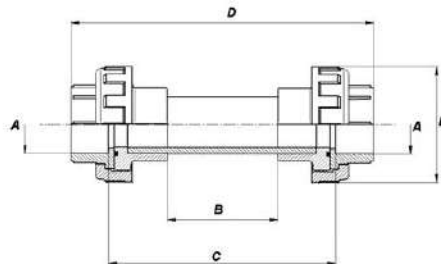


Conexión encolada
Solvent socket
Pour collage

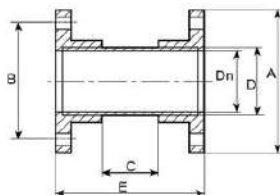
CODIGO	TUBO Ø
7421016	16
7421020	20
7421025	25
7421032	32
7421040	40
7421050	50
7421063	63
7421075	75
7421090	90
7421110	110

Conexión roscada
Female threaded
Tarudée

CODIGO	TUBO Ø
7422016	3/8"
7422020	1/2"
7422025	3/4"
7422032	1"
7422040	1 1/4"
7422050	1 1/2"
7422063	2"
7422075	2 1/2"
7422090	3"
7422110	4"



Visor en PVC con bridas socket PN-10
PVC-U-sight glass with NP-10 socket flanges
Controlleur de circulation avec bride fixe PN-10



DN	A	B	C	D	E	Kg.
65	185	145	100	75	220	1,444
80	200	160	100	90	228	1,808
100	220	180	100	110	240	2,450
* 110	230	190	150	125	310	2,482
* 125	250	210	150	140	346	3,452
* 150	285	240	150	160	342	4,481



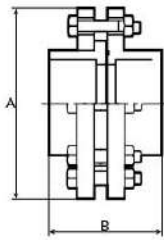
CODIGO	TUBO Ø
7420075	75
7420090	90
7420110	110
* 7420125	125
* 7420140	140
* 7420160	160

* PN-4



BRIDAS DE PVC-U Y SUS ACCESORIOS
PVC-U FLANGES & ADAPTORS
SYSTEMES DE BRIDES EN PVC-U

Enlace de bridas (manguito portabridas, brida libre, junta plana, brida socket y tornillería)
Flanged union (Flange adaptor, backing ring, flat gasket, socket flange and bolts)
Union a brida (collet, brida, joint plat, brida fixe et boulons)

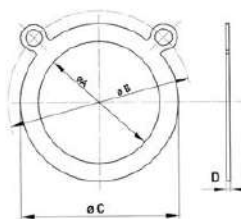


DN	A	B	Tornillos	Kg.
65	185	100	M16x70	1,900
80	200	110	M16x70	2,913
100	220	130	M16x80	3,536
110	230	155	M16x80	4,295
125	250	178	M16x90	4,524
150	285	186	M20x90	6,753
200	340	214	M20x100	9,121
225	399	289	M20x120	14,750



CODIGO	TUBO Ø
7410075	75
7410090	90
7410110	110
7410125	125
7410140	140
7410160	160
7410200	200
7410250	250

Junta plana (para EVA temperatura máxima de trabajo 40° - para EPDM 60°)
Flat gasket (for EVA maximal working temperature 40° - for EPDM 60°)
Joint plat (pour EVA temperature maximale de travail 40° - pour EPDM 60°)



A	B	C	D	MATERIAL
20	65	32	2	EVA
25	75	39	2	EVA
32	85	48	2	EVA
40	100	59	2	EVA
50,5	110	73	3	EVA
64	125	87	3	EVA
78	145	103	3	EVA
91	160	123	3	EVA
110	180	147	4	EVA
126	190	163	4	EVA
140	210	185	4	EVA
160	240	209	4	EVA
200	295	244	5	EVA
225	295	273	5	EVA
250	350	325	5	EVA
315	400	375	5	EVA
402	515	479	4	EPDM
506	620	583	6	EPDM



CODIGO	TUBO Ø	Umd/c Pcs/Bca
7127020	20	-
7127025	25	-
7127032	32	-
7127040	40	-
7127050	50	60 A
7127063	63	60 A
7127075	75	60 B
7127090	90	64 B
7127110	110	48 B
7127125	125	44 B
7127140	140	25 B
7127160	160	25 C
7127200	200	25 C
7127225	225	25 C
7127250	250	45 J
7127315	315	45 J
7127400	400	-
7127500	500	-



ACCESORIOS PRESION EN PVC-U MIXTOS (ENCOLAR / ROSCAR)
PVC-U PRESSURE MIXED FITTINGS (SOCKET / THREADED)
RACCORDS PVC-U PRESSION MIXTE (À COLLER / À VISSER)

Recomendaciones para las conexiones roscadas

Las roscas de nuestros accesorios y válvulas cumplen con la norma ISO 228. Para el sellado de las rosca se debe utilizar cinta de PTFE o bien otro tipo de sellador que no sea dañino para el PVC-U. En ningún caso y bajo ningún concepto debe usarse hilo de cáñamo para realizar la estanquidad en las roscas.

Las conexiones roscadas no deben estar situadas en partes de la instalación donde existan o se prevean grandes tensiones mecánicas. Tampoco en lugares donde se produzcan amplias variaciones de temperatura y de forma cíclica, ya que las tensiones derivadas de las dilataciones someten a estas conexiones a grandes esfuerzos.

Recommendations for threaded unions

Our threaded fittings and valves are according standard ISO 228. For thread's sealing should be used PTFE tape or another kind of sealant which not damage the PVC. It is not recommended in any case the use of hemp as a seal on threads.

Threaded connections must be away from parts of installations where strong mechanical stresses exist, nor in areas where exist important variations of temperature in a cyclical way because the stresses and efforts originated of these dilataciones affect and require a considerable effort to the threaded connection.

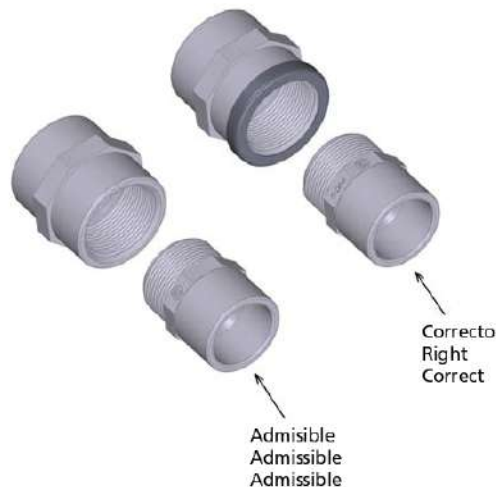
Recommandations pour des unions taraudées

Les filetages de nôtres raccords et vannes sont confirmés à la norme ISO 228. Pour le scellage des filets des vis il est nécessaire l'usage du ruban en PTFE ou un autre moyen qui ne détériore pas les PVC. Ne jamais utiliser fil chanvre à cet effet.

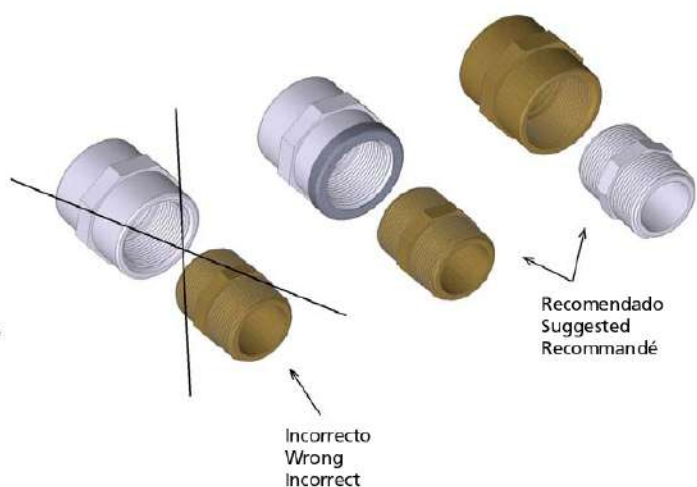
Les connexions filetées on doit les utiliser aux parties de l'installation livres des grandes tensions mécaniques et pas dans les espaces avec des variations de température soudains et de forme cyclique, donnée que ces tensions dérivés des dilataciones exigent un grand effort aux connexions.

CONEXIONES PROPUESTAS - PROPOSAL CONNECTIONS - PROPOSITIONS DE CONNEXIONS

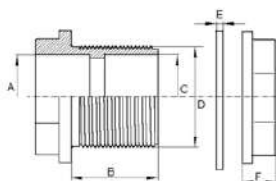
Conexión de accesorios de plástico
 Plastic fittings connections
 Connexion raccords de plastique



Conexión de accesorios de metal y plástico
 Plastic and metal fittings connections
 Connexion de raccords de plastique avec metal



Pasamuros PN-6
Table duct NP-6
Traversée de paroi PN-6



A	B	C	D	E	F	Kg.
25	48	25	33 (1")	3	14	0,059
50	52	50	60 (2")	4	20	0,174
63	55	63	75 (2 1/2")	4	22	0,263
75	65	75	88 (3")	5	26	0,392

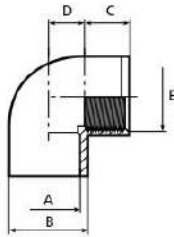


CODIGO	TUBO Ø	Unid. c. Pes. Box
7209025	25-1"	75 C
7209050	50-2"	50 D
7209063	63-2 1/2"	72 H
7209075	75-3"	45 H



ACCESORIOS PRESION EN PVC-U MIXTOS (ENCOLAR / ROSCAR)
PVC-U PRESSURE MIXED FITTINGS (SOCKET / THREADED)
RACCORDS PVC-U PRESSION MIXTE (À COLLER / À VISSER)

Codo 90°
Elbow 90°
CoUDE à 90°

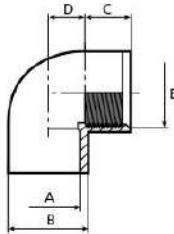


DN	A	B	C	D	E	Kg.
10	16	22	14	9	3/8"	0,010
15	20	25	16	10	1/2"	0,020
20	25	32	19	14,75	3/4"	0,029
25	32	40	22	18,5	1"	0,050
32	40	50	26	23	1 1/4"	0,084
40	50	63	31	27	1 1/2"	0,180
50	63	75	38	32,5	2"	0,255
50	63	75	38	32,5	1 1/2"	0,274
65	75	90	44	40	2 1/2"	0,422
80	90	110	51	48	3"	0,786
100	110	131	61	58	4"	1,171



CODIGO	TUBO Ø	Und/c Pcs/Box
7301016	16-3/8"	100 A
7301020	20-1/2"	50 A
7301025	25-3/4"	75 B
7301032	32-1"	90 C
7301040	40-1 1/4"	100 D
7301050	50-1 1/2"	100 H
7301063	63-2"	60 H
7301064	63-1 1/2"	60 H
7301075	75-2 1/2"	38 H
7301090	90-3"	20 H
7301110	110-4"	12 H

Codo reforzado 90° (anillo en acero inox.) PN-16 (para roscas metálicas)
Elbow reinforced 90° (st. steel ring) NP-16 (for metal thread connections)
CoUDE renforcé à 90° (anneau en acier inox.) PN-16 (pour raccords métalliques)

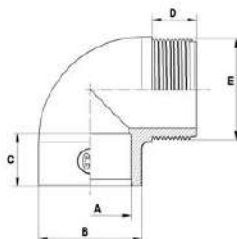


DN	A	B	C	D	E	Kg.
10	16	22	14	9	3/8"	0,016
15	20	25	16	13,5	1/2"	0,027
20	25	32	19	14,75	3/4"	0,038
25	32	40	22	18,5	1"	0,060
32	40	50	26	23	1 1/4"	0,098
40	50	63	31	27	1 1/2"	0,202
50	63	75	38	32,5	2"	0,282



CODIGO	TUBO Ø	Und/c Pcs/Box
7301616	16-3/8"	100 A
7301620	20-1/2"	50 A
7301625	25-3/4"	75 B
7301632	32-1"	90 C
7301640	40-1 1/4"	100 D
7301650	50-1 1/2"	100 H
7301663	63-2"	60 H

Codo 90° mixto H/M
Elbow 90° F/M
CoUDE à 90° mixte F/M



DN	A	B	C	D	E	Kg.
25	32	41	22	19,5	1 1/4"	0,040
40	50	61	31	23	1 1/2"	0,115
40	50	62	32	27	2"	0,164
50	63	76	38	25	2"	0,217

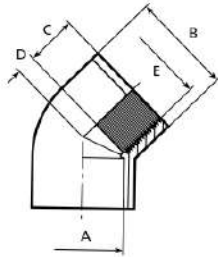


CODIGO	TUBO Ø	Und/c Pcs/Box
7301532	32-1 1/4"	90 C
7301550	50-1 1/2"	120 H
7301551	50-2"	120 H
7301563	63-2"	70 H



ACCESORIOS PRESION EN PVC-U MIXTOS (ENCOLAR / ROSCAR)
PVC-U PRESSURE MIXED FITTINGS (SOCKET / THREADED)
RACCORDS PVC-U PRESSION MIXTE (À COLLER / À VISSER)

Codo 45°
Elbow 45°
Coude à 45°

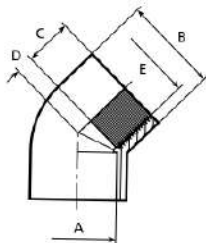


DN	A	B	C	D	E	Kg
10	16	22	14	4,5	3/8"	0,011
15	27	25	16	5	1/2"	0,016
20	25	32	19	6	3/4"	0,024
25	32	40	22	7,5	1"	0,038
32	40	50	26	9,5	1 1/4"	0,073
40	50	63	31	11,5	1 1/2"	0,152
50	63	75	38	14	2"	0,221
65	75	90	44	16,5	2 1/2"	0,353
80	90	110	51	19,5	3"	0,682
100	110	131	61	23	4"	0,873



CODIGO	TUBO Ø	Und/c Pcs/Box
7302016	16-3/8"	60 A
7302020	20-1/2"	60 A
7302025	25-3/4"	80 B
7302032	32-1"	100 C
7302040	40-1 1/4"	120 D
7302050	50-1 1/2"	120 H
7302063	63-2"	60 H
7302075	75-2 1/2"	40 H
7302090	90-3"	26 H
7302110	110-4"	16 H

Codo reforzado 45° (anillo en acero inox.) PN-16 (para roscas metálicas)
Elbow reinforced 45° (st. steel ring) NP-16 (for metal thread connections)
Coude renforcé à 45° (anneau en acier inox.) PN-16 (pour raccords métalliques)

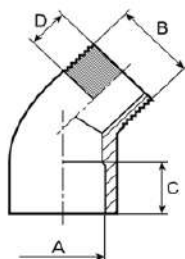


DN	A	B	C	D	E	Kg
10	16	22	14	4,5	3/8"	0,016
15	20	25	16	5	1/2"	0,025
20	25	32	19	6	3/4"	0,033
25	32	40	22	7,5	1"	0,048
32	40	50	26	9,5	1 1/4"	0,087
40	50	63	31	11,5	1 1/2"	0,174
50	63	75	38	14	2"	0,248



CODIGO	TUBO Ø	Und/c Pcs/Box
7302616	16-3/8"	60 A
7302620	20-1/2"	60 A
7302625	25-3/4"	80 B
7302632	32-1"	100 C
7302640	40-1 1/4"	120 D
7302650	50-1 1/2"	120 H
7302663	63-2"	60 H

Codo 45° mixto H/M
Elbow 45° F/M
Coude à 45° mixte F/M



DN	A	B	C	D	Kg
40	50	1 1/2"	31	22,5	0,112
50	63	2"	38	38	0,173

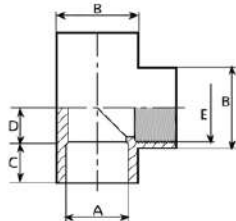


CODIGO	TUBO Ø	Und/c Pcs/Box
7302550	50-1 1/2"	120 H
7302563	63-2"	60 H



ACCESORIOS PRESION EN PVC-U MIXTOS (ENCOLAR / ROSCAR)
PVC-U PRESSURE MIXED FITTINGS (SOCKET / THREADED)
RACCORDS PVC-U PRESSION MIXTE (À COLLER / À VISSER)

Te 90°
Tee 90°
Tè à 90°

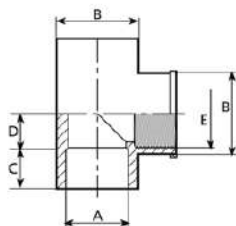


DN	A	B	C	D	E	Kg.
10	16	22	14	11	3/8"	0,014
15	20	25	16	11	1/2"	0,024
20	25	32	19	14	3/4"	0,039
25	32	40	22	17	1"	0,067
32	40	50	26	21	1 1/4"	0,117
40	50	63	31	26	1 1/2"	0,240
50	63	75	38	32	2"	0,347
65	75	90	44	39	2 1/2"	0,585
80	90	110	51	47	3"	1,074
100	110	131	61	58	4"	1,505



CODIGO	TUBO Ø	Und/c Pcs/Box
7303016	16-3/8"	60 A
7303020	20-1/2"	30 A
7303025	25-3/4"	45 B
7303032	32-1"	60 C
7303040	40-1 1/4"	68 D
7303050	50-1 1/2"	76 H
7303063	63-2"	45 H
7303075	75-2 1/2"	27 H
7303090	90-3"	14 H
7303110	110-4"	9 H

Te mixta reforzada 90° (anillo en acero inox.) PN-16 (para roscas metálicas)
Tee reinforced 90° (st. steel ring) NP-16 (for metal thread connections)
Tè renforcé à 90° (anneau en acier inox.) PN-16 (pour raccords métalliques)

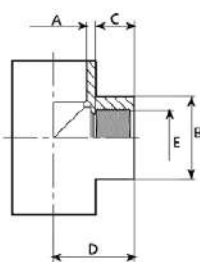


DN	A	B	C	D	E	Kg.
10	16	22	14	11	3/8"	0,019
15	20	25	16	11	1/2"	0,031
20	25	32	19	14	3/4"	0,048
25	32	40	22	17	1"	0,077
32	40	50	26	21	1 1/4"	0,132
40	50	63	31	26	1 1/2"	0,262
50	63	75	38	32	2"	0,374



CODIGO	TUBO Ø	Und/c Pcs/Box
7303616	16-3/8"	60 A
7303620	20-1/2"	30 A
7303625	25-3/4"	45 B
7303632	32-1"	60 C
7303640	40-1 1/4"	68 D
7303650	50-1 1/2"	76 H
7303663	63-2"	45 H

Te reducida 90°
Reducing tee 90°
Tè à 90° réduit



DN	A	B	C	D	E	Kg.
15-10	20	25	16	27	3/8"	0,027
20-10	25	32	19	33	3/8"	0,043
20-15	25	32	19	35	1/2"	0,044
25-15	32	40	22	39	1/2"	0,069
25-20	32	40	22	39	3/4"	0,069
32-15	40	50	26	49	1/2"	0,135
32-20	40	50	26	49	3/4"	0,135
32-25	40	50	26	49	1"	0,142
40-15	50	63	31	59	1/2"	0,254
40-20	50	63	31	59	3/4"	0,263
40-25	50	63	31	59	1"	0,260
40-32	50	63	31	59	1 1/4"	0,267
50-15	63	75	42	73	1/2"	0,375
50-20	63	75	42	73	3/4"	0,377
50-25	63	75	38	73	1"	0,382
50-32	63	75	38	73	1 1/4"	0,435
50-40	63	75	38	73	1 1/2"	0,416
65-25	75	90	48	84	1"	0,624
65-32	75	90	48	84	1 1/4"	0,672
65-40	75	90	48	84	1 1/2"	0,654
65-50	75	90	44	84	2"	0,702
80-32	90	110	54	99	1 1/4"	1,151
80-40	90	110	54	99	1 1/2"	1,178
80-50	90	110	54	99	2"	1,186
80-65	90	110	51	99	2 1/2"	1,248

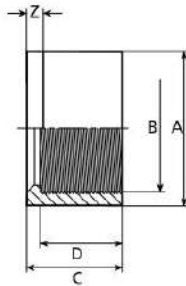


CODIGO	TUBO Ø	Und/c Pcs/Box
7304020	20-3/8"	30 A
7304025	25-3/8"	45 B
7304026	25-1/2"	45 B
7304032	32-1/2"	60 C
7304033	32-3/4"	60 C
7304040	40-1/2"	68 D
7304041	40-3/4"	68 D
7304042	40-1"	68 D
7304050	50-1/2"	76 H
7304051	50-3/4"	76 H
7304052	50-1"	76 H
7304053	50-1 1/4"	76 H
7304061	63-1/2"	45 H
7304062	63-3/4"	45 H
7304063	63-1"	45 H
7304064	63-1 1/4"	45 H
7304065	63-1 1/2"	45 H
7304072	75-1"	27 H
7304073	75-1 1/4"	27 H
7304074	75-1 1/2"	27 H
7304075	75-2"	27 H
7304087	90-1 1/4"	14 H
7304088	90-1 1/2"	14 H
7304089	90-2"	14 H
7304090	90-2 1/2"	14 H



ACCESORIOS PRESION EN PVC-U MIXTOS (ENCOLAR / ROSCAR)
PVC-U PRESSURE MIXED FITTINGS (SOCKET / THREADED)
RACCORDS PVC-U PRESSION MIXTE (À COLLER / À VISSER)

Casquillo reducido mixto
Reduced threaded
Simple reduction mixte

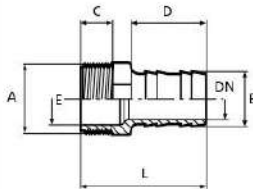


DN	A	B	C	D	Z	Kg
10	20	3/8"	16	14	2	0,003
10	25	3/8"	19	14	5	0,008
15	25	1/2"	19	16	3	0,005
20	32	3/4"	22	19	3	0,009
25	40	1"	26	22	4	0,017
32	50	1 1/4"	31	26	5	0,029
40	63	1 1/2"	38	31	7	0,071
50	75	2"	44	38	6	0,106
65	90	2 1/2"	51	44	7	0,146
80	110	3"	61	51	10	0,229



CODIGO	TUBO Ø	Und/c Pcs/Box
7306020	20-3/8"	100 A
7306025	25-3/8"	100 A
7306026	25-1/2"	100 A
7306032	32-3/4"	80 A
7306040	40-1"	100 B
7306050	50-1 1/4"	75 B
7306063	63-1 1/2"	90 C
7306075	75-2"	50 C
7306090	90-2 1/2"	30 C
7306110	110-3"	15 C

Espiga conexión roscada macho
Spigot connection BSP male thread
Raccord cannelé fileté à visser

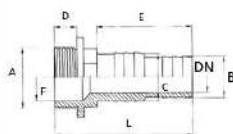


DN	A	B	C	D	E	L	Kg
10	3/8"	16	12	40	10	62	0,012
15	1/2"	18	15	40	13	65	0,015
15	1/2"	20	15	42	13	67	0,016
15	3/4"	20	17	42	18	69	0,020
20	3/4"	25	17	44	18	71	0,022
20	1"	25	19	44	22	73	0,032
25	1"	30	19	48	22	77	0,037
32	1 1/4"	40	22	56	31	91	0,076
25	1 1/2"	38	22	55	36	91	0,080
32	1 1/2"	40	22	56	36	91	0,083
40	1 1/2"	50	25	60	36	102	0,121
50	2"	60	28	61	47	109	0,163



CODIGO	TUBO Ø B - A	Und/c Pcs/Box
7134016	16-3/8"	200 B
7134020	18-1/2"	200 B
7134021	20-1/2"	150 B
7134025	20-3/4"	100 B
7134026	25-3/4"	100 B
7134032	25-1"	70 B
7134033	30-1"	60 B
7134040	40-1 1/4"	60 C
7134050	38-1 1/2"	60 C
7134051	40-1 1/2"	60 C
7134052	50-1 1/2"	80 D
7134063	60-2"	60 D

Espiga rosca larga
Long spigot connection BSP male thread
Longue raccord cannelé à visser



DN	A	B	C	D	E	F	L	Kg
25	1 1/2"	32	38	18	76	36	110	0,090

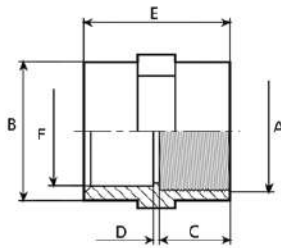


CODIGO	TUBO Ø C - A	Und/c Pcs/Box
7136050	38-1 1/2"	45 C



ACCESORIOS PRESION EN PVC-U MIXTOS (ENCOLAR / ROSCAR)
PVC-U PRESSURE MIXED FITTINGS (SOCKET / THREADED)
RACCORDS PVC-U PRESSION MIXTE (À COLLER / À VISSER)

Manguito unión mixto
Adaptor sockets
Manchons mixte

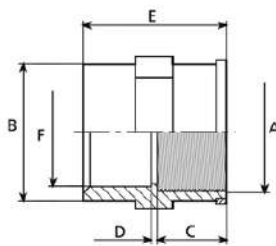


DN	A	B	C	D	E	F	Kg.
10	3/8"	27	14	3	31	16	0,021
15	1/2"	27	16	3	46	20	0,022
20	3/4"	33	21	3	45	25	0,025
25	1"	41	22	3	47	32	0,042
20	3/4"	41	22	3	47	32	0,064
32	1 1/4"	50	26	3	55	40	0,064
40	1 1/2"	61	31	3	65	50	0,130
50	2"	75	38	3	79	63	0,182
65	2 1/2"	90	44	4	92	75	0,281
80	3"	108	51	5	107	90	0,467
100	4"	131	61	6	128	110	0,677



CODIGO	TUBO Ø	Und/c Pcs/Box
7305016	16-3/8"	40 A
7305020	20-1/2"	40 A
7305025	25-3/4"	90 B
7305032	32-1"	64 B
7305033	32-3/4"	64 B
7305040	40-1 1/4"	70 C
7305050	50-1 1/2"	96 D
7305063	63-2"	45 D
7305075	75-2 1/2"	36 D
7305090	90-3"	16 D
7305110	110-4"	12 D

Manguito unión mixto reforzado (anillo en acero inox.) PN-16 (para roscas metálicas)
Adaptor sockets reinforced (st. steel ring) NP-16 (for metal thread connections)
Manchons renforcés (anneau en acier inox.) PN-16 (pour raccords métalliques)

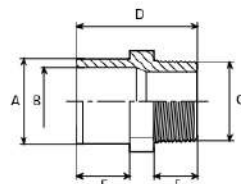


DN	A	B	C	D	E	F	Kg.
10	3/8"	27	14	7	36	16	0,029
15	1/2"	27	16	3	35	20	0,029
20	3/4"	33	19	3	41	25	0,034
25	1"	41	22	3	45	32	0,052
32	1 1/4"	50	26	3	55	40	0,078
40	1 1/2"	61	31	3	65	50	0,132
50	2"	75	38	3	79	63	0,209



CODIGO	TUBO Ø	Und/c Pcs/Box
7305616	16-3/8"	40 A
7305620	20-1/2"	40 A
7305625	25-3/4"	90 B
7305632	32-1"	64 B
7305640	40-1 1/4"	70 C
7305650	50-1 1/2"	96 D
7305663	63-2"	45 D

Machón mixto reducido
Adaptor nipple
Embouts fileté réduit



DN	A	B	C	D	E	F	Kg.
15	20	16	1/2"	42	16	14	0,010
20	25	20	3/4"	47	19	16	0,017
25	32	25	1"	54	22	19	0,027
32	40	32	1 1/4"	60	26	21	0,046
40	50	40	1 1/2"	70	31	25	0,073
50	63	50	2"	78	38	25	0,114
65	75	63	2 1/2"	89	44	30	0,175
80	90	75	3"	99	51	33	0,280

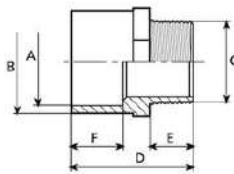


CODIGO	TUBO Ø	Und/c Pcs/Box
7307016	16/20-1/2"	80 A
7307020	20/25-3/4"	50 A
7307025	25/32-1"	90 B
7307032	32/40-1 1/4"	96 C
7307040	40/50-1 1/2"	130 D
7307050	50/63-2"	72 D
7307063	63/75-2 1/2"	45 D
7307075	75/90-3"	45 H



ACCESORIOS PRESION EN PVC-U MIXTOS (ENCOLAR / ROSCAR)
PVC-U PRESSURE MIXED FITTINGS (SOCKET / THREADED)
RACCORDS PVC-U PRESSION MIXTE (À COLLER / À VISSER)

Terminal rosca macho
Adaptor bushes
Embouts filetés



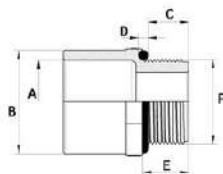
DN	A	B	C	D	E	F	Kg.
10	16	20	3/8"	34	12	14	0,007
15	20	25	1/2"	42	14	16	0,013
20	25	32	3/4"	46	16	19	0,017
25	32	40	1"	55	19	22	0,041
32	40	50	1 1/4"	62	21	26	0,062
40	50	63	1 1/2"	77,5	28	31	0,110
50	63	75	2"	87,5	26	48	0,152
50	63	75	2"	92,5	38	48	0,189
65	75	90	2 1/2"	93	30	44	0,268
80	90	110	3"	108	33	51	0,480
* 80	110	125	3"	116	33	63	0,604
100	110	125	4"	122	39	61	0,591



CODIGO	TUBO Ø	Und/c Pcs/Box
7308016	16/20-3/8"	100 A
7308020	20/25-1/2"	70 A
7308025	25/32-3/4"	40 A
7308032	32/40-1"	60 B
7308040	40/50-1 1/4"	70 C
7308050	50/63-1 1/2"	60 C
7308063	63/75-2"	72 D
7308066	63/75-2"	72 D
7308075	75/90-2 1/2"	80 H
7308090	90/110-3"	45 H
* 7308091	110/125-3"	36 H
7308110	110/125-4"	24 H

* New

Terminal rosca macho con junta tórica exterior
Adaptor bushes with exterior o-ring
Embout fileté avec joint extérieur

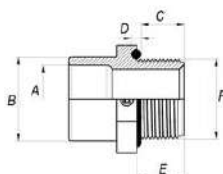


DN	A	B	C	D	E	F	Kg.
40	50	63	25	5,7	28	1 1/2"	0,111
50	63	75	35	5,7	38	2"	0,195
50	63	75	23	5,7	26	2"	0,156



CODIGO	TUBO Ø	Und/c Pcs/Box
7308052	50/63-1 1/2"	60 C
7308065	63/75-2"	72 D
7308067	63/75-2"	72 D

Machón mixto reducido con junta tórica exterior
Adaptor nipple with exterior o-ring
Embout fileté réduit avec joint extérieur



DN	A	B	C	D	E	F	Kg.
40	40	50	25	5,7	28	1 1/2"	0,105

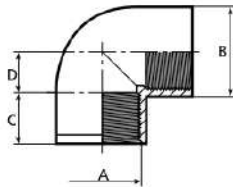


CODIGO	TUBO Ø	Und/c Pcs/Box
7307042	50/40-1 1/2"	100 D



ACCESORIOS PRESION EN PVC-U PARA ROSCAR
THREADED PVC-U PRESSURE FITTINGS
RACCORDS PVC-U PRESSION À VISSER

Codo 90°
Elbows 90°
Coudes 90°

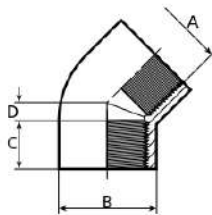


DN	A	B	C	D	Kg.
10	3/8"	22	14	9	0,010
15	1/2"	25	16	13,5	0,015
20	3/4"	32,5	19	14,75	0,028
25	1"	40	22	18,5	0,051
32	1 1/4"	50	26	23	0,085
40	1 1/2"	63	31,5	27	0,194
50	2"	75	38	32,5	0,292
65	2 1/2"	90	44	40	0,430
80	3"	110	51	48	0,845
100	4"	131	61	58	1,155



CODIGO	TUBO Ø	Und/c Pcs/Box
7201016	3/8"	100 A
7201020	1/2"	50 A
7201025	3/4"	75 B
7201032	1"	90 C
7201040	1 1/4"	100 D
7201050	1 1/2"	100 H
7201063	2"	60 H
7201075	2 1/2"	38 H
7201090	3"	20 H
7201110	4"	12 H

Codo 45°
Elbows 45°
Coudes 45°

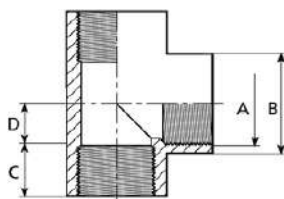


DN	A	B	C	D	Kg.
10	3/8"	22	14	4,5	0,018
15	1/2"	25	16	5	0,011
20	3/4"	32,5	19	6	0,023
25	1"	40	22	7,5	0,039
32	1 1/4"	50	26	9,5	0,072
40	1 1/2"	63	31,5	11,5	0,168
50	2"	75	38	14	0,251
65	2 1/2"	90	44	16,5	0,340
80	3"	110	51	19,5	0,702
100	4"	131	61	23	0,850



CODIGO	TUBO Ø	Und/c Pcs/Box
7202016	3/8"	100 A
7202020	1/2"	60 A
7202025	3/4"	80 B
7202032	1"	100 C
7202040	1 1/4"	120 D
7202050	1 1/2"	120 H
7202063	2"	60 H
7202075	2 1/2"	40 H
7202090	3"	26 H
7202110	4"	16 H

Te 90°
Tees 90°
Té à 90°



DN	A	B	C	D	Kg.
10	3/8"	22	14	9	0,015
15	1/2"	25	16	11	0,024
20	3/4"	32	19	14	0,040
25	1"	40	22	17	0,067
32	1 1/4"	50	26	21	0,117
40	1 1/2"	63	31	26	0,285
50	2"	75	38	32	0,424
65	2 1/2"	90	44	39	0,630
80	3"	110	51	47	1,188
100	4"	131	61	58	1,454

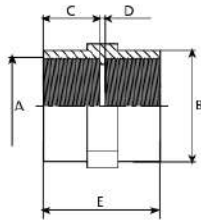


CODIGO	TUBO Ø	Und/c Pcs/Box
7203016	3/8"	60 A
7203020	1/2"	30 A
7203025	3/4"	45 B
7203032	1"	60 C
7203040	1 1/4"	68 D
7203050	1 1/2"	76 H
7203063	2"	45 H
7203075	2 1/2"	27 H
7203090	3"	14 H
7203110	4"	9 H



ACCESORIOS PRESION EN PVC-U PARA ROSCAR
THREADED PVC-U PRESSURE FITTINGS
RACCORDS PVC-U PRESSION À VISSER

Manguito doble rosca
Adaptor sockets
Manchons



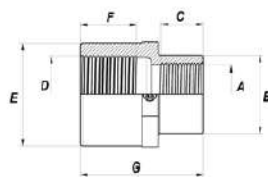
DN	A	B	C	D	E	Kg.
10	3/8"	27	14	3	31	0,022
15	1/2"	27	16	3	35	0,021
20	3/4"	33	19	3	41	0,025
25	1"	41	22	3	47	0,043
32	1 1/4"	50	26	3	55	0,064
40	1 1/2"	61	31	3	65	0,142
50	2"	75	38	3	79	0,206
65	2 1/2"	90	44	4	92	0,294
80	3"	108	51	5	107	0,496
100	4"	131	61	6	128	0,704



CODIGO	TUBO Ø	Und./Pcs/Box
7205016	3/8"	40 A
7205020	1/2"	40 A
7205025	3/4"	90 B
7205032	1"	64 B
7205040	1 1/4"	70 C
7205050	1 1/2"	96 D
7205063	2"	45 D
7205075	2 1/2"	36 D
7205090	3"	16 D
7205110	4"	12 D

Manguitos roscados reducidos
Reduced adaptor sockets
Manchons réduits

NOVEDAD / NOVELTY / NOVEAUTÉ



DN	A	B	C	D	E	F	G	Kg.
10	3/8"	22	11	1/2"	27	13	35	0,018
10	3/8"	22	11	3/4"	33	15	42	0,030
15	1/2"	27	13	3/4"	33	15	42	0,025
10	3/8"	27	11	1"	41	18	47	0,044
15	1/2"	27	13	1"	41	18	48	0,042
20	3/4"	33	15	1"	41	18	49	0,045
15	1/2"	27	13	1 1/4"	50	22	54	0,056
20	3/4"	33	15	1 1/4"	50	22	55	0,070
25	1"	41	18	1 1/4"	50	22	57	0,068
20	3/4"	33	15	1 1/2"	63	26	61	0,101
25	1"	41	18	1 1/2"	63	26	64	0,113
32	1 1/4"	50	22	1 1/2"	63	26	68	0,122
25	1"	41	18	2"	75	32	71	0,139
32	1 1/4"	50	22	2"	75	32	75	0,155
40	1 1/2"	63	26	2"	75	32	80	0,198
32	1 1/4"	50	22	2 1/2"	90	33	81	0,201
40	1 1/2"	63	26	2 1/2"	90	33	86	0,256
50	2"	75	32	2 1/2"	90	33	92	0,321
40	1 1/2"	63	26	3"	110	41	93	0,403
50	2"	75	32	3"	110	41	100	0,461
65	2 1/2"	90	33	3"	110	41	106	0,414
50	2"	75	32	4"	130	51	111	0,540
65	2 1/2"	90	33	4"	130	51	117	0,551
80	3"	110	41	4"	130	51	124	0,698

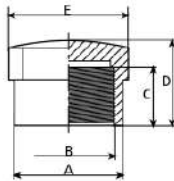


CODIGO	TUBO Ø	Und./Pcs/Box
7213020	1/2"-3/8"	-
7213025	3/4"-3/8"	-
7213026	3/4"-1/2"	-
7213032	1"-3/8"	-
7213033	1"-1/2"	-
7213034	1"-3/4"	-
7213040	1 1/4"-1/2"	-
7213041	1 1/4"-3/4"	-
7213042	1 1/4"-1"	-
7213050	1 1/2"-3/4"	-
7213051	1 1/2"-1"	-
7213052	1 1/2"-1 1/4"	-
7213063	2"-1"	-
7213064	2"-1 1/4"	-
7213065	2"-1 1/2"	-
7213075	2 1/2"-1 1/4"	-
7213076	2 1/2"-1 1/2"	-
7213077	2 1/2"-2"	-
7213090	3"-1 1/2"	-
7213091	3"-2"	-
7213092	3"-2 1/2"	-
7213110	4"-2"	-
7213111	4"-2 1/2"	-
7213112	4"-3"	-



ACCESORIOS PRESION EN PVC-U PARA ROSCAR
THREADED PVC-U PRESSURE FITTINGS
RACCORDS PVC-U PRESSION À VISSER

Tapón rosca hembra
Caps
Bouchons

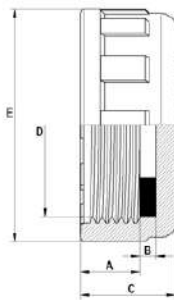


DN	A	B	C	D	E	Kg.
10	27	3/8"	14	24	24	0,007
15	27	1/2"	16	24	27	0,010
20	33	3/4"	19	26	32	0,014
25	41	1"	22	31	41	0,026
32	50	1 1/4"	26	34	50	0,040
40	61	1 1/2"	31	35	61	0,075
50	75	2"	38	39	75	0,126
65	90	2 1/2"	41	64	90	0,272
80	110	3"	46	75	110	0,514
100	130	4"	61	90	130	0,664



CODIGO	TUBO Ø	Und./c. Pcs/Box
7206016	3/8"	100 A
7206020	1/2"	100 A
7206025	3/4"	60 A
7206032	1"	80 B
7206040	1 1/4"	70 B
7206050	1 1/2"	45 B
7206063	2"	22 B
7206075	2 1/2"	16 C
7206090	3"	13 C
7206110	4"	18 D

Tapón rosca hembra con junta
Caps with gasket
Bouchons avec joint

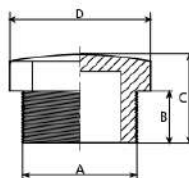


DN	A	B	C	D	E	Kg.
10	9	2	15	3/8" G	22	0,004
15	12	2	17	1/2" G	27	0,006
20	14	2	19	3/4" G	35	0,013
25	16	2	22	1" G	43	0,022
32	13	4	21	1 1/4" G	53	0,031
40	15	4	23	1 1/2" G	57	0,039
50	15	4	25	2" G	72	0,070
65	19	4	31	2 1/2" G	98	0,174
80	22	5	38	3" G	112	0,272
100	27	5	33	4" G	126	0,393



CODIGO	TUBO Ø	Und./c. Pcs/Box
7214016	3/8" G	250 A
7214020	1/2" G	200 A
7214025	3/4" G	100 A
7214032	1" G	150 B
7214040	1 1/4" G	100 B
7214050	1 1/2" G	150 C
7214063	2" G	100 C
7214075	2 1/2" G	48 C
7214090	3" G	26 C
7214110	4" G	36 D

Tapón rosca macho
Plugs
Bouchons



DN	A	B	C	D	Kg.
10	3/8"	13	20	24	0,006
15	1/2"	14	24	27	0,010
20	3/4"	16	26	32	0,013
25	1"	19	31	38	0,020
32	1 1/4"	21	34	46	0,029
40	1 1/2"	21	34	55	0,048
50	2"	26	39	65	0,070
65	2 1/2"	30	50	85	0,205
80	3"	33	59	100	0,339
100	4"	38	68	130	0,643

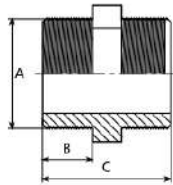


CODIGO	TUBO Ø	Und./c. Pcs/Box
7207016	3/8"	100 A
7207020	1/2"	100 A
7207025	3/4"	75 A
7207032	1"	100 B
7207040	1 1/4"	92 B
7207050	1 1/2"	125 C
7207063	2"	75 C
7207075	2 1/2"	75 D
7207090	3"	24 C
7207110	4"	12 C



ACCESORIOS PRESION EN PVC-U PARA ROSCAR
THREADED PVC-U PRESSURE FITTINGS
RACCORDS PVC-U PRESSION À VISSER

Machón doble rosca
Hexagon nipples
Mamelon Mâle / Mâle

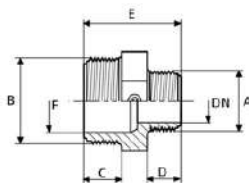


DN	A	B	C	Kg.
10	3/8"	11	32	0,008
15	1/2"	14	40	0,010
20	3/4"	16	44	0,016
25	1"	19	47	0,027
32	1 1/4"	21	55	0,043
40	1 1/2"	21	56	0,062
50	2"	26	66	0,090
65	2 1/2"	31	78	0,195
80	3"	34	84	0,278
100	4"	39	96	0,610



CODIGO	TUBO Ø	Und/c Pcs/Box
7204016	3/8"	80 A
7204020	1/2"	80 A
7204025	3/4"	50 A
7204032	1"	75 B
7204040	1 1/4"	40 B
7204050	1 1/2"	70 C
7204063	2"	96 D
7204075	2 1/2"	45 D
7204090	3"	36 D
7204110	4"	18 D

Reducción roscada macho/macho
Reducing nipples male thread
Réduction mâle/mâle

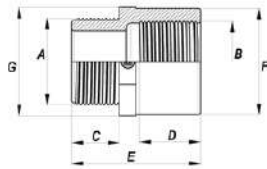


DN	A	B	C	D	E	F	Kg.
10	3/8"	1/2"	15	11	36	14	0,010
10	3/8"	3/4"	16	11	39	18	0,018
15	1/2"	3/4"	16	15	43	18	0,019
10	3/8"	1"	19	11	48	24	0,029
15	1/2"	1"	19	15	48	24	0,030
20	3/4"	1"	19	16	48	24	0,030
15	1/2"	1 1/4"	21	15	48	31	0,046
20	3/4"	1 1/4"	21	16	50	31	0,048
25	1"	1 1/4"	21	19	53	31	0,043
20	3/4"	1 1/2"	21	16	51	37	0,056
25	1"	1 1/2"	21	19	54	37	0,059
32	1 1/4"	1 1/2"	21	21	56	37	0,061
25	1"	2"	25	18	58	47	0,090
32	1 1/4"	2"	25	21	61	47	0,093
40	1 1/2"	2"	25	21	61	47	0,093
32	1 1/4"	2 1/2"	31	21	68	59	0,165
40	1 1/2"	2 1/2"	31	23	70	59	0,167
50	2"	2 1/2"	31	26	73	59	0,172
40	1 1/2"	3"	34	23	73	70	0,232
50	2"	3"	34	29	79	70	0,241
65	2 1/2"	3"	34	31	81	70	0,260
50	2"	4"	39	29	86	90	0,422
65	2 1/2"	4"	39	31	88	90	0,439
80	3"	4"	39	34	91	90	0,462



CODIGO	TUBO Ø	Und/c Pcs/Box
7208020	1/2-3/8"	80 A
7208025	3/4-3/8"	60 A
7208026	3/4-1/2"	50 A
7208032	1-3/8"	110 B
7208033	1-1/2"	100 B
7208034	1-3/4"	90 B
7208040	1 1/4-1/2"	50 B
7208041	1 1/4-3/4"	50 B
7208042	1 1/4-1"	45 B
7208050	1 1/2-3/4"	105 C
7208051	1 1/2-1"	105 C
7208052	1 1/2-1 1/4"	70 C
7208063	2-1"	72 C
7208064	2-1 1/4"	72 C
7208065	2-1 1/2"	48 C
7208075	2 1/2-1 1/4"	75 D
7208076	2 1/2-1 1/2"	75 D
7208077	2 1/2-2"	60 D
7208090	3-1 1/2"	60 D
7208091	3-2"	60 D
7208092	3-2 1/2"	36 D
7208110	4-2"	24 D
7208111	4-2 1/2"	24 D
7208112	4-3"	24 D

Reducción roscada larga macho/hembra
Long reducing nipples male/female
Réduction longue mâle/femelle

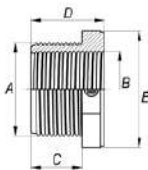


DN	AxB	C	D	E	F	G	Kg.
10	3/8"-3/8"	12	14	34	20	22	0,008
10	3/8"-1/2"	12	18	34	27	32	0,008
10	1/2"-3/8"	15	22	42	25	27	0,015
15	1/2"-1/2"	15	22	42	25	27	0,012
15	1/2"-3/4"	15	21	41	32	36	0,022
10	3/4"-3/8"	18	20	45	25	32	0,020
15	3/4"-1/2"	17	20	45	29	32	0,021
20	3/4"-3/4"	17	19	48	32	34	0,024
20	3/4"-1"	17	25	47	41	41	0,035
10	1"-3/8"	20	19	44	27	36	0,031
15	1"-1/2"	20	19	44	27	36	0,028
20	1"-3/4"	20	19	53	32	36	0,031
25	1"-1"	20	23	57	40	42	0,044
25	1"-1 1/4"	20	27	53	50	50	0,055
15	1 1/4"-1/2"	22	19	46	27	46	0,042
20	1 1/4"-3/4"	22	21	47	33	46	0,043
25	1 1/4"-1"	22	25	51	41	46	0,049
32	1 1/4"-1 1/4"	21	27	62	50	50	0,070
32	1 1/4"-1 1/2"	22	30	57	63	63	0,100
20	1 1/2"-3/4"	25	24	54	33	50	0,061
25	1 1/2"-1"	25	26	56	41	50	0,061
32	1 1/2"-1 1/4"	25	28	66	50	50	0,073
40	1 1/2"-1 1/2"	28	41	76	63	64	0,134
40	1 1/2"-2"	22	35	64	75	75	0,154
25	2"-1"	25	25	54	41	64	0,086
32	2"-1 1/4"	25	29	58	50	64	0,090
40	2"-1 1/2"	25	35	73	63	64	0,137
50	2"-2"	26	49	83	75	80	0,195
50	2"-2 1/2"	26	35	72	90	90	0,197
32	2 1/2"-1 1/4"	30	27	57	53	80	0,160
40	2 1/2"-1 1/2"	30	30	60	63	80	0,185
50	2 1/2"-2"	30	50	87	75	80	0,224
65	2 1/2"-2 1/2"	30	44	93	90	95	0,296
65	2 1/2"-3"	30	43	81	110	110	0,362
40	3"-1 1/2"	33	30	70	63	93	0,244
50	3"-2"	33	35	75	75	93	0,258
65	3"-2 1/2"	33	50	99	90	93	0,311
80	3"-3"	33	52	109	110	115	0,541
80	3"-4"	33	50	97	135	135	0,659
50	4"-2"	40	39	86	75	120	0,447
65	4"-2 1/2"	40	42	89	90	120	0,448
80	4"-3"	40	43	92	108	120	0,493
100	4"-4"	40	55	123	125	129	0,528



CODIGO	TUBO Ø	Und/c Pcs/Box
7211016	3/8"-3/8"	100 A
7211017	3/8"-1/2"	85 A
7211020	1/2"-3/8"	70 A
7211021	1/2"-1/2"	80 A
7211022	1/2"-3/4"	40 A
7211025	3/4"-3/8"	40 A
7211026	3/4"-1/2"	40 A
7211027	3/4"-3/4"	40 A
7211028	3/4"-1"	75 B
7211032	1"-3/8"	80 B
7211033	1"-1/2"	100 B
7211034	1"-3/4"	70 B
7211035	1"-1"	55 B
7211036	1"-1 1/4"	70 B
7211040	1 1/4"-1/2"	64 B
7211041	1 1/4"-3/4"	64 B
7211042	1 1/4"-1"	55 B
7211043	1 1/4"-1 1/4"	70 C
7211044	1 1/4"-1 1/2"	80 C
7211050	1 1/2"-3/4"	120 C
7211051	1 1/2"-1"	90 C
7211052	1 1/2"-1 1/4"	130 D
7211053	1 1/2"-1 1/2"	80 D
7211054	1 1/2"-2"	45 C
7211063	2"-1"	80 C
7211064	2"-1 1/4"	50 C
7211065	2"-1 1/2"	72 D
7211066	2"-2"	50 D
7211067	2"-2 1/2"	60 D
7211075	2 1/2"-1 1/4"	90 D
7211076	2 1/2"-1 1/2"	72 D
7211077	2 1/2"-2"	45 D
7211078	2 1/2"-2 1/2"	36 D
7211079	2 1/2"-3"	30 D
7211090	3"-1 1/2"	60 D
7211091	3"-2"	45 D
7211092	3"-2 1/2"	35 D
7211093	3"-3"	30 H
7211094	3"-4"	20 D
7211110	4"-2"	24 D
7211111	4"-2 1/2"	18 D
7211112	4"-3"	18 D
7211113	4"-4"	-

Reducción roscada corta macho/hembra
Short reducing nipples male/female
Réduction courte mâle/femelle



AxB	C	D	E	Kg.
1/2"-1/8"	16	26	24	0,010
1/2"-1/4"	16	26	24	0,010
3/4"-1/8"	16	28	32	0,020
3/4"-1/4"	16	28	32	0,020
3/4"-1/2"	16	28	32	0,015
1"-1/4"	19	32	40	0,033
1"-3/4"	19	32	40	0,025
1 1/4"-1"	21	34	50	0,041
1 1/2"-1 1/4"	21	35	55	0,041
2"-1 1/2"	25	40	65	0,082
2 1/2"-2"	31	47	80	0,133
3"-2 1/2"	34	50	95	0,156
4"-3"	39	57	120	0,372

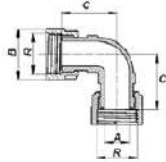


CODIGO	TUBO Ø	Und/c Pcs/Box
7212019	1/2"-1/8"	140 A
7212020	1/2"-1/4"	140 A
7212025	3/4"-1/8"	70 A
7212026	3/4"-1/4"	70 A
7212027	3/4"-1/2"	70 A
7212032	1"-1/4"	110 B
7212033	1"-3/4"	110 B
7212040	1 1/4"-1"	70 B
7212050	1 1/2"-1 1/4"	60 B
7212063	2"-1 1/2"	35 B
7212075	2 1/2"-2"	85 D
7212090	3"-2 1/2"	60 D
7212110	4"-3"	30 D



COLECTORES MULTIPLES EN PVC-U (PN-10)
PVC-U MANIFOLD SYSTEMS (NP-10)
COLLECTEURS MULTIPLES EN PVC-U (PN-10)

Codo 90° 1" Hembra-Hembra / Elbow 90° 1" Female-Female / Coude 90° 1" Femelle-Femelle

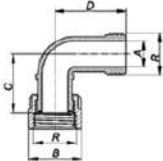


A	B	C	R	Kg.
20	41,5	45,5	1"	0,068



CODIGO	TUBO Ø	Und/c Pcs/Box
7210002	1"-G	80 C

Codo 90° 1" Hembra-Macho / Elbow 90° 1" Female-Male / Coude 90° 1" Femelle-Male

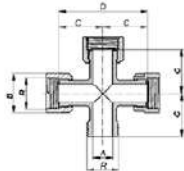


A	B	C	D	R	Kg.
20	41,5	45,5	55,5	1"	0,057



CODIGO	TUBO Ø	Und/c Pcs/Box
7210004	1"-G	100 C

Cruz 1" Hembra-Hembra-Macho / Cross 1" Female-Female-Male / Croix 1" Femelle-Femelle-Male

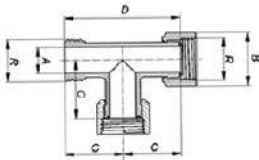


A	B	C	D	R	Kg.
20	41,5	45,5	91	1"	0,114



CODIGO	TUBO Ø	Und/c Pcs/Box
7210007	1"-G	40 C

Te 1" Hembra-Hembra-Macho / Tee 1" Female-Female-Male / Te 1" Femelle-Femelle-Male

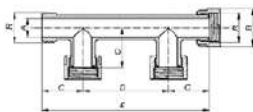


A	B	C	D	R	Kg.
20	41,5	45,5	91	1"	0,084



CODIGO	TUBO Ø	Und/c Pcs/Box
7210005	1"-G	50 C

Colector 2 salidas 1" Hembra-Macho / 2 outlet manifold 1" Female-Male / Collecteur 2 sorties 1" Femelle-Male

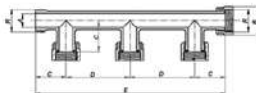


A	B	C	D	E	R	Kg.
20	41,5	45,5	95	186	1"	0,145



CODIGO	TUBO Ø	Und/c Pcs/Box
7210008	1"-G	35 C

Colector 3 salidas 1" Hembra-Macho / 3 outlet manifold 1" Female-Male / Collecteur 3 sorties 1" Femelle-Male

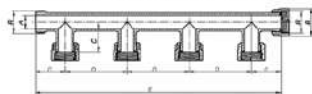


A	B	C	D	E	R	Kg.
20	41,5	45,5	95	281	1"	0,210



CODIGO	TUBO Ø	Und/c Pcs/Box
7210009	1"-G	20 C

Colector 4 salidas 1" Hembra-Macho / 4 outlet manifold 1" Female-Male / Collecteur 4 sorties 1" Femelle-Male



A	B	C	D	E	R	Kg.
20	41,5	45,5	95	376	1"	0,271

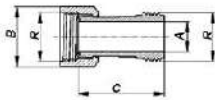


CODIGO	TUBO Ø	Und/c Pcs/Box
7210010	1"-G	15 C



COLECTORES MULTIPLES EN PVC-U (PN-10)
PVC-U MANIFOLD SYSTEMS (NP-10)
COLLECTEURS MULTIPLES EN PVC-U (PN-10)

Manguito unión 1" Hembra-Macho / Socket 1" Female-Male / Manchon 1" Femelle-Male

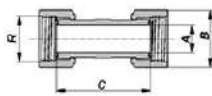


A	B	C	R	Kg.
20	41,5	69	1"	0,046



CODIGO	TUBO Ø	Und/c Pcs/Box
7210003	1"-G	140 C

Manguito unión 1" Hembra-Hembra / Socket 1" Female-Female / Manchon 1" Femelle-Femelle

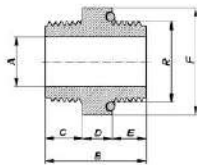


A	B	C	R	Kg.
20	41,5	59	1"	0,063



CODIGO	TUBO Ø	Und/c Pcs/Box
7210006	1"-G	100 C

Manchón doble rosca 1" con tórica / Nipple 1" Male / Namelon 1" Male

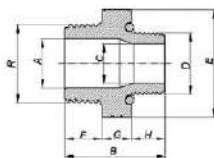


A	B	C	D	E	F	R	Kg.
20	41,5	15,5	12	14	44	1"	0,042



CODIGO	TUBO Ø	Und/c Pcs/Box
7210011	1"-G	80 B

Manchón doble rosca reducido 1"-3/4" con tórica / Reducing nipple 1"-3/4" Male / Reduction mamelon 1"-3/4" Male

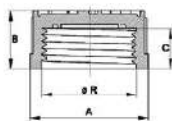


A	B	C	D	E	F	G	H	R	Kg.
20	41,5	16	3/4"	44	15,5	12	14	1"	0,037



CODIGO	TUBO Ø	Und/c Pcs/Box
7210012	1"-3/4"	80 B

Tapón rosca 1" Hembra / Cap 1" Female / Bouchon 1" Femelle

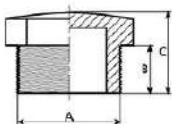


A	B	C	R	Kg.
41,5	20	14	1"	0,023



CODIGO	TUBO Ø	Und/c Pcs/Box
7210013	1"-G	100 B

Tapón rosca 1" Macho / Cap 1" Male / Bouchon 1" Male

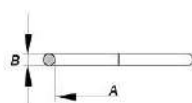


A	B	C	Kg.
1"	19	31	0,023



CODIGO	TUBO Ø	Und/c Pcs/Box
7207032	1"-G	100 B

Tórica colector 1" / Manifold o-ring 1" / Joint torique collecteur 1"



A	B	Kg.
21,95	1,78	-

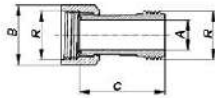


CODIGO	TUBO Ø	Und/c Pcs/Box
0440070032	1"-G	10-



COLECTORES MULTIPLES EN PVC-U (PN-10)
PVC-U MANIFOLD SYSTEMS (NP-10)
COLLECTEURS MULTIPLES EN PVC-U (PN-10)

Manguito unión 1" Hembra-Macho / Socket 1" Female-Male / Manchon 1" Femelle-Male

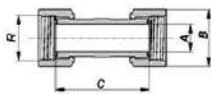


A	B	C	R	Kg.
20	41,5	69	1"	0,046



CODIGO	TUBO Ø	Und./c Pcs/Box
7210003	1"-G	140 C

Manguito unión 1" Hembra-Hembra / Socket 1" Female-Female / Manchon 1" Femelle-Femelle

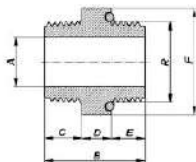


A	B	C	R	Kg.
20	41,5	59	1"	0,063



CODIGO	TUBO Ø	Und./c Pcs/Box
7210006	1"-G	100 C

Manchón doble rosca 1" con tórica / Nipple 1" Male / Namelon 1" Male

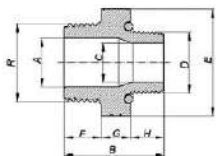


A	B	C	D	E	F	R	Kg.
20	41,5	15,5	12	14	44	1"	0,042



CODIGO	TUBO Ø	Und./c Pcs/Box
7210011	1"-G	80 B

Manchón doble rosca reducido 1"-3/4" con tórica / Reducing nipple 1"-3/4" Male / Reduction mamelon 1"-3/4" Male

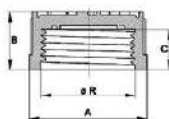


A	B	C	D	E	F	G	H	R	Kg.
20	41,5	16	3/4"	44	15,5	12	14	1"	0,037



CODIGO	TUBO Ø	Und./c Pcs/Box
7210012	1"-3/4"	80 B

Tapón rosca 1" Hembra / Cap 1" Female / Bouchon 1" Femelle

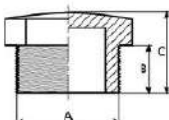


A	B	C	R	Kg.
41,5	20	14	1"	0,023



CODIGO	TUBO Ø	Und./c Pcs/Box
7210013	1"-G	100 B

Tapón rosca 1" Macho / Cap 1" Male / Bouchon 1" Male

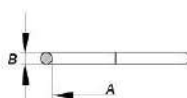


A	B	C	Kg.
1"	19	31	0,023



CODIGO	TUBO Ø	Und./c Pcs/Box
7207032	1"-G	100 B

Tórica colector 1" / Manifold o-ring 1" / Joint torique collecteur 1"



A	B	Kg.
21,95	1,78	-

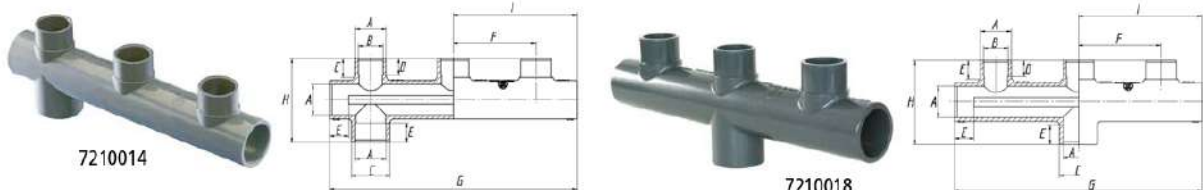


CODIGO	TUBO Ø	Und./c Pcs/Box
0440070032	1"-G	10 -



COLECTOR DE 3 VÍAS EN PVC-U
PVC-U 3 WAY MANIFOLD
COLLECTEUR 3 VOIES EN PVC-U

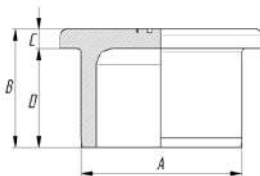
Colector de tres vías Ø 50 mm (con dos tapones laterales incluidos) PN-16
Manifold three way Ø 50 mm (including two laterals caps) NP-16
Collecteur de trois voies Ø 50 mm (avec deux bouchons latéraux inclus) PN-16



A	B	C	D	E	F	G	H	I	Kg
50	40	63	26,5	31	135	405	137	202,5	0,780
50	40	63	26,5	31	135	405	137	202,5	0,780

CODIGO	TUBO Ø	Und/c Pcs/Box
7210014	50	12 S
7210018	50	12 S

Tapón liso macho para colector Ø 50 mm
Cap male Ø 50 mm for manifold
Bouchon pour collecteur Ø 50 mm

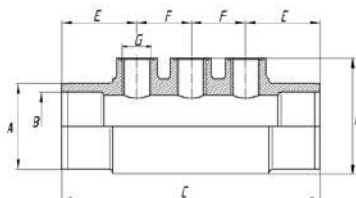


A	B	C	D	Kg.
50	37	6	31	0,055



CODIGO	TUBO Ø	Und/c Pcs/Box
7210015	50	45 B

Colector dosificador PN-10
Dispenser manifold NP-10
Collecteur distributeur PN-10



A	B	C	D	E	F	G	Kg.
63	50	190	85	55	40	1/2"	0,479
63	50	190	85	55	55	1/2"-3/8"	0,482

CODIGO	TUBO Ø	Und/c Pcs/Box
7210016	50/63-1/2"	5 B
7210017	50/63-1/2"-3/8"	5 B



TUBERÍA FLEXIBLE
HOSES
TUYAUX FLEXIBLE

Tubería flexible en PVC
PVC hoses
Tuyaux flexible en PVC



CODIGO	Ø INT. mm.	Ø EXT. mm.	Espesor mm.	Peso c/rollo kgs.
7603016	13	16	1,5	-
7603020	16	20	2,5	9,5
* 7603025	20	25	2,5	12
* 7603032	26	32	3	17,5
* 7603040	34	40	3	21
* 7603050	43	50	3,5	36
* 7603063	55	63	5	60

* En color blanco sobre demanda.
In white colour can be supplied.
En couleur blanche sous demande.

CARACTERÍSTICAS:

- Tubo flexible en PVC con refuerzo interno, acabado exterior liso, color gris.
- Presión máxima de trabajo: 5 bar.
- Según Ral europeo para tubos de presión N° 7011.
- Se suministra en rollos de 50 m.

CHARACTERISTICS:

- PVC hoses with internal reinforcement, smooth finished. Grey colour.
- Max. working pressure: 5 bar.
- Following the european Ral for pressure pipes Nr. 7011.
- Supplied in a 50 m. long roll.

CARACTERISTIQUES:

- Tuyau flexible en PVC avec renfort interieur. Fini exterior plat. Couleur gris.
- Pression max. de travail: 5 bar.
- Selon le Ral european pour tuyau de pression N° 7011.
- Se livrera en rouleaux de 50 m.

Tubería flexible autoflotante
Self-floating hoses
Tuyaux flexible autoflottant



Ø 38 con manguitos
Ø 38 with socket
Ø 38 avec manchons

CODIGO	Caja Box
7605008	8 mts.
7605010	10 mts.
7605012	12 mts.
7605015	15 mts.
7604038	30 mts.

Sin manguitos
Without socket
Sans manchons

CODIGO	Ø INT. mm.
7604032	32
7604050	50

Manguito terminal autoflotante
Self-floating socket
Manchons autoflottant

CODIGO	Ø INT. mm.
7605031	38

CARACTERÍSTICAS:

- Muy flexible y de fácil manejo en limpiafondos manual o automáticos.
- Se suministra en rollos de 30 Mts.

ESTRUCTURA:

- Tubería flexible en E.V.A., autoflotante resistente a rayos U.V.

APLICACIONES:

- Limpiafondos de piscinas.

CHARACTERISTICS:

- Flexible and easy handle in manual and automatic vacuum cleaners.
- Supplied in a 30 Mts. long roll.

STRUCTURE:

- E.V.A. hoses, self-floating, resistant to U.V. radiations.

APPLICATION:

- Swimming pool vacuum cleaners.

CARACTERISTIQUES:

- Plus flexible et de facile manienent en nettoyage de fonds manuel où automatique.
- Se livrera en rouleaux de 30 Mts.

STRUCTURE:

- Tuyaux flexible en E.V.A., autoflottant et resistant aux rayons U.V.

APPLICATION:

- Nettoyants de fonds de piscines.

Pinzas abiertas
Open pipe clips
Colliers de fixation



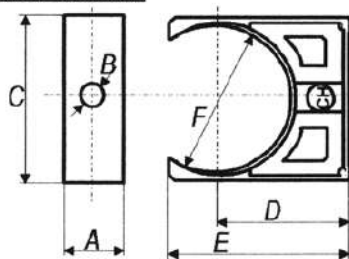
CODIGO	TUBO Ø	Kg.	Und/c Pcs/Box
7128020	20	0,005	500 C
7128025	25	0,006	400 C
7128032	32	0,009	250 C
7128040	40	0,012	150 C
7128050	50	0,022	160 C
7128063	63	0,033	100 C
7128075	75	0,050	60 C
7128090	90	0,074	40 C
7128110	110	0,096	24 C
7128125	125	0,144	16 C
7128140	140	0,183	16 C
7128160	160	0,255	12 C
7128200	200	0,356	8 C

Clip de cierre
Bridle clamp
Clip de fermeture

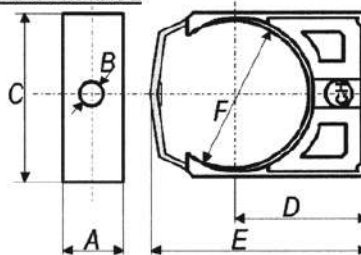


CODIGO	TUBO Ø	Kg.	Und/c Pcs/Box
7129050	50	0,003	160 B
7129063	63	0,005	100 A
7129075	75	0,008	60 B
7129090	90	0,009	40 A
7129110	110	0,014	24 A
7129125	125	0,015	16 A
7129140	140	0,017	16 A
7129160	160	0,019	12 A
7129200	200	0,040	8 A

PINZAS SIN CIERRE



PINZAS CON CIERRE



MEDIDAS DE LAS PINZAS

CODIGO	TUBO Ø	TIPO	A	B	C	D	E	F
7128020	20	SIN CIERRE	16	5	33	26	34	20
7128025	25	SIN CIERRE	16	5	38	30	40	25
7128032	32	SIN CIERRE	16	5	48	35	45	32
7128040	40	SIN CIERRE	18	5	54	43	55	40
7128050	50	CON CIERRE	22	8	65	50	79	50
7128063	63	CON CIERRE	25	8	79	58	94	63
7128075	75	CON CIERRE	27	9	94	79	119	75
7128090	90	CON CIERRE	30	9	110	90	139	90
7128110	110	CON CIERRE	30	9	137	108	169	110
7128125	125	CON CIERRE	30	8,5	165	110	178	124
7128140	140	CON CIERRE	30	8,5	197	110	186	139
7128160	160	CON CIERRE	30	8,5	218	127,5	213	159
7128200	200	CON CIERRE	30	8,5	274	155	263	199



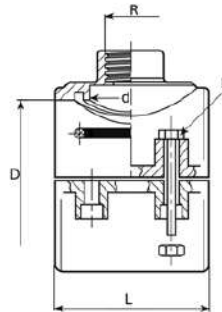
COLLARINES DE TOMA
PP CLAMP SADDLES
COLLIERS DE PRISE EN CHARGE

Collarín de toma PN-10
Clamp saddles NP-10
Colliers de prise en charge PN-10

Juntas tóricas de NBR
Tornillería zincada
Cuerpo de polipropileno (PP)

O-Rings in NBR
Zinc coated screws
Body in polypropilene (PP)

Joints toriques en NBR
Boulonnerie zinquée
Corps du polypropilene (PP)



CODIGO	Ø TUBO D-R	N Tornillos	Kg.	Und/c Pcs/Box
7601020	20 - 1/2"	2	0,070	150
7601025	25 - 1/2"	2	0,065	180
7601026	25 - 3/4"	2	0,060	180
7601032	32 - 1/2"	2	0,109	140
7601033	32 - 3/4"	2	0,115	140
7601034	32 - 1"	2	0,129	140
7601040	40 - 1/2"	2	0,117	110
7601041	40 - 3/4"	2	0,122	110
7601042	40 - 1"	2	0,129	110
7601050	50 - 1/2"	4	0,196	80
7601051	50 - 3/4"	4	0,197	80
7601052	50 - 1"	4	0,203	80
7601053	50 - 1 1/4"	4	0,206	80
7601063	63 - 1/2"	4	0,225	55
7601064	63 - 3/4"	4	0,226	55
7601065	63 - 1"	4	0,230	55
7601066	63 - 1 1/4"	4	0,244	55
7601067	63 - 1 1/2"	4	0,251	55
7601075	75 - 1/2"	4	0,290	40
7601076	75 - 3/4"	4	0,292	40
7601077	75 - 1"	4	0,297	40
7601078	75 - 1 1/4"	4	0,300	40
7601079	75 - 1 1/2"	4	0,305	40
7601080	75 - 2"	4	0,324	40
7601090	90 - 1/2"	4	0,335	30
7601091	90 - 3/4"	4	0,341	30
7601092	90 - 1"	4	0,342	30
7601093	90 - 1 1/4"	4	0,348	30
7601094	90 - 1 1/2"	4	0,357	30
7601095	90 - 2"	4	0,370	30
7601109	110 - 1/2"	4	0,446	19
7601110	110 - 3/4"	4	0,454	19
7601111	110 - 1"	4	0,455	19
7601112	110 - 1 1/4"	4	0,458	19
7601113	110 - 1 1/2"	4	0,468	19
7601114	110 - 2"	4	0,477	19
7601115	110 - 2 1/2"	4	0,482	35
7601125	125 - 3/4"	6	0,730	12
7601126	125 - 1"	6	0,732	12

CODIGO	Ø TUBO D-R	N Tornillos	Kg.	Und/c Pcs/Box
7601127	125 - 1 1/4"	6	0,737	12
7601128	125 - 1 1/2"	6	0,739	12
7601129	125 - 2"	6	0,755	12
7601130	125 - 2 1/2"	4	0,759	35
7601140	140 - 1"	6	0,817	25
7601141	140 - 1 1/4"	6	0,814	25
7601142	140 - 1 1/2"	6	0,814	25
7601143	140 - 2"	6	0,877	25
7601144	140 - 3"	6	0,866	15
7601160	160 - 1"	6	1,116	13
7601161	160 - 1 1/4"	6	1,119	13
7601162	160 - 1 1/2"	6	1,128	13
7601163	160 - 2"	6	1,144	13
7601164	160 - 3"	6	1,372	9
7601165	160 - 4"	6	1,378	9
7601199	200 - 1"	6	1,579	11
7601200	200 - 1 1/4"	6	1,790	11
7601201	200 - 1 1/2"	6	1,795	11
7601202	200 - 2"	6	1,798	11
7601203	200 - 3"	6	1,800	9
7601204	200 - 4"	6	2,080	8
7601225	225 - 1"	6	2,160	6
7601226	225 - 1 1/4"	6	2,712	6
7601227	225 - 1 1/2"	6	2,164	6
7601228	225 - 2"	6	2,197	6
7601229	225 - 3"	6	2,228	6
7601230	225 - 4"	6	2,220	6
7601250	250 - 1"	6	2,712	4
7601251	250 - 1 1/4"	6	2,712	4
7601252	250 - 1 1/2"	6	2,712	4
7601253	250 - 2"	6	2,713	4
7601254	250 - 3"	6	2,750	4
7601255	250 - 4"	6	2,765	4
7601315	315 - 1"	6	4,005	3
7601316	315 - 1 1/4"	6	4,010	3
7601317	315 - 1 1/2"	6	4,020	3
7601318	315 - 2"	6	4,050	3
7601319	315 - 3"	6	4,065	3
7601320	315 - 4"	6	4,125	3

* Bajo demanda posibilidad de suministrar anillos de refuerzo Inox.
 On request possibility to supply stainless steel reinforcement rings.
 Sur demande possibilité de fournir l'anneau de renfort en acier inoxydable.





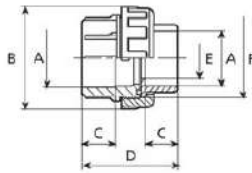
ENLACES 3 PIEZAS EN PVC-U
PVC-U UNIONS
RACCORDS UNION 3 PIÈCES EN PVC-U

• Juntas tóricas de EPDM

• EPDM O-Rings

• Joints toriques de EPDM

Hembra encolar modelo BSP
Female socket BSP model
Femelle à coller modèle BSP

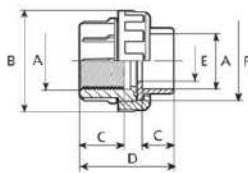


DN	A	B	C	D	E	F	Kg.
10	16	35	14	45	10	3/4"	0,023
15	20	43	16	45	15	1"	0,039
20	25	53	19	51	20	1 1/4"	0,065
25	32	57	21	57	25	1 1/2"	0,075
32	40	72	26	67	32	2"	0,143
40	50	81	31	82	40	2 1/4"	0,177
50	63	98	38	93	50	2 3/4"	0,283
65	75	118	44	113	63	3 1/2"	0,510
80	90	136	51	123	80	4"	0,711



CODIGO	TUBO Ø	Unid./C. Pcs./Box
7414016	16	100 B
7414020	20	100 P
7414025	25	100 C
7414032	32	100 Q
7414040	40	100 U
7414050	50	100 H
7414063	63	72 T
7414075	75	16 R
7414090	90	18 S

Hembra encolar y roscar modelo BSP
Female socket and thread BSP model
Famelle à coller et taraudé modèle BSP



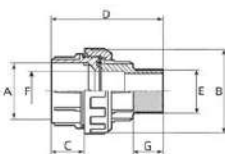
DN	A	B	C	D	E	F	Kg.
10	3/8"	41	14	45	10	3/4"	0,024
15	1/2"	41	16	45	15	1"	0,038
20	3/4"	52	19	51	20	1 1/4"	0,064
25	1"	60	21	57	25	1 1/2"	0,074
32	1 1/4"	74	26	67	32	2"	0,134
40	1 1/2"	80	31	82	40	2 1/4"	0,190
50	2"	98	38	93	50	2 3/4"	0,306
65	2 1/2"	118	44	113	63	3 1/2"	0,519
80	3"	136	51	123	80	4"	0,739



NOVEDAD / NOVELTY / NOVEAUTÉ

CODIGO	TUBO Ø	Unid./C. Pcs./Box
7412016	16-3/8"	100 B
7412020	20-1/2"	100 P
7412025	25-3/4"	100 C
7412032	32-1"	100 Q
7412040	40-1 1/4"	100 U
7412050	50-1 1/2"	100 H
7412063	63-2"	72 T
7412075	75-2 1/2"	16 R
7412090	90-3"	18 S

Hembra encolar y rosca macho modelo BSP
Female socket and male threaded BSP model
Femelle à coller et taraudé mâle modèle BSP



DN	A	B	C	D	E	F	G	Kg.
15	20	43	16	64	14	15	15	0,042
20	25	53	19	70	16	20	17	0,068
25	32	57	22	81	20	25	20	0,079
32	40	72	26	87	22	32	21	0,159
40	50	81	31	105	20	41	28,5	0,195
50	63	99	38	119	25	51	28,5	0,321
65	75	118	40	152	30	65	44	0,569
80	90	135	40	160	33	80	44	0,797



CODIGO	TUBO Ø	Unid./C. Pcs./Box
7404020	20-1/2"	25 A
7404025	25-3/4"	30 B
7404032	32-1"	50 C
7404040	40-1 1/4"	36 C
7404050	50-1 1/2"	75 S
7404063	63-2"	50 H
7404075	75-2 1/2"	12 R
7404090	90-3"	18 S



ENLACES 3 PIEZAS EN PVC-U
PVC-U UNIONS
RACCORDS UNION 3 PIÈCES EN PVC-U

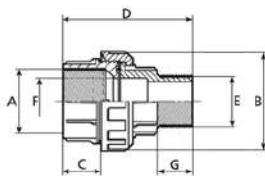
• Juntas tóricas de EPDM

• EPDM O-Rings

• Joints toriques de EPDM

Rosca hembra / Rosca macho modelo BSP
Female threaded / Male threaded BSP model
Femelle taraudé / Taraudé mâle modèle BSP

NOVEDAD / NOVELTY / NOVEAUTÉ

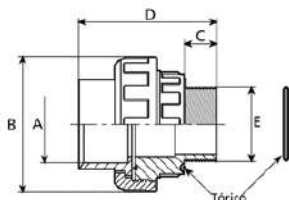


DN	A	B	C	D	E	F	Kg.
15	1/2"	43	16	64	1/2"	15	0,042
20	3/4"	53	19	70	3/4"	20	0,068
25	1"	57	22	81	1"	25	0,079
32	1 1/4"	72	26	87	1 1/4"	32	0,159
40	1 1/2"	81	31	105	1 1/2"	41	0,195
50	2"	99	38	119	2"	51	0,321
65	2 1/2"	118	40	152	2 1/2"	65	0,569
80	3"	135	40	160	3"	80	0,797



CODIGO	TUBO Ø	Und/c Pcs/Box
7408020	1/2" H - 1/2" M	25 A
7408025	3/4" H - 3/4" M	30 B
7408032	1" H - 1" M	50 C
7408040	1 1/4" H - 1 1/4" M	36 C
7408050	1 1/2" H - 1 1/2" M	75 S
7408063	2" H - 2" M	50 H
7408075	2 1/2" H - 2 1/2" M	12 R
7408090	3" H - 3" M	18 S

Hembra rosca macho con torica exterior modelo BSP
Female socket and male thread with external o-ring BSP model
Femelle à coller et taraudé mâle avec joint extérieur modèle BSP



DN	A	B	C	D	E	Kg.
40	50	81	18,5	86	1 1/2"	0,197
40	50	98	20	95	2"	0,345
50	63	98	20	99	2"	0,330



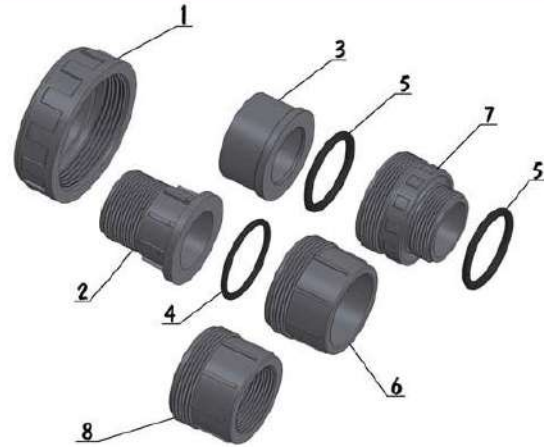
CODIGO	TUBO Ø	Und/c Pcs/Box
7405050	50-1 1/2"	50 D
7405064	50-2"	72 T
7405063	63-2"	72 T



**DESPIECE ENLACE TUERCA BSP
SPARE PARTS BSP NUT
PIÈCES DETACHÉES ÉCROU BSP**

RECAMBIOS - SPARE PARTS - PIECES DETACHÉES

- 1- Tuerca
- 2- Manguito rosca macho
- 3- Manguito encolar hembra
- 4- Junta tórica
- 5- Junta tórica exterior
- 6- Base enlace encolar
- 7- Base enlace rosca macho
- 8- Base enlace rosca hembra



Ø 16 - 3/8"

CODIGO	DENOMINACIÓN	FIG.
0336110016	Tuerca enlace Ø3/4"G	1
0335110016	Manguito hembra encolar ISO 1452	3
0440330016	Junta tórica enlace EPDM	4
0338114016	Base enlace Ø16	6
0338112016	Base enlace rosca hembra 3/8"	8

Ø 20 - 1/2"

CODIGO	DENOMINACIÓN	FIG.
0336110020	Tuerca enlace Ø1"G	1
0335210020	Manguito rosca macho	2
0335110020	Manguito hembra encolar ISO 1452	3
0440011020	Junta tórica enlace EPDM	4
0338114020	Base enlace Ø20	6
0338112020	Base enlace rosca hembra 1/2"	8

Ø 25 - 3/4"

CODIGO	DENOMINACIÓN	FIG.
0336110026	Tuerca enlace Ø1¼"G	1
0335210025	Manguito rosca macho	2
0335110025	Manguito hembra encolar ISO 1452	3
0440330026	Junta tórica enlace EPDM	4
0338114025	Base enlace Ø25	6
0338112025	Base enlace rosca hembra 3/4"	8

Ø 32 - 1"

CODIGO	DENOMINACIÓN	FIG.
0336110033	Tuerca enlace Ø1½"G	1
0335210032	Manguito rosca macho	2
0335110032	Manguito hembra encolar ISO 1452	3
0440011032	Junta tórica enlace EPDM	4
0338114032	Base enlace Ø32	6
0338112032	Base enlace rosca hembra 1"	8

Ø 40 - 1¼"

CODIGO	DENOMINACIÓN	FIG.
0336110042	Tuerca enlace Ø2"G	1
0335210040	Manguito rosca macho	2
0335110040	Manguito hembra encolar ISO 1452	3
0440011040	Junta tórica enlace EPDM	4
0338114040	Base enlace Ø40	6
0338112040	Base enlace rosca hembra 1¼"	8

Ø 50 - 1½"

CODIGO	DENOMINACIÓN	FIG.
0336110041	Tuerca enlace Ø2¼"G	1
0335210050	Manguito rosca macho	2
0335110050	Manguito hembra encolar ISO 1452	3
0440011050	Junta tórica enlace EPDM	4
0440330050	Junta enlace tórica exterior	5
0338114050	Base enlace	6
0338114051	Base enlace rosca macho tórica exterior	7
0338112050	Base enlace rosca hembra 1½"	8

Ø 63 - 2"

CODIGO	DENOMINACIÓN	FIG.
0336110051	Tuerca enlace Ø2¾"G	1
0335210063	Manguito rosca macho	2
0335110063	Manguito hembra encolar ISO 1452	3
0440330064	Junta tórica enlace EPDM	4
0440330063	Junta enlace tórica exterior	5
0338114063	Base enlace Ø63	6
0338114064	Base enlace rosca macho tórica exterior	7
0338112063	Base enlace rosca hembra 2"	8

Ø 75 - 2½"

CODIGO	DENOMINACIÓN	FIG.
0336110075	Tuerca enlace Ø3½"G	1
0335210075	Manguito rosca macho	2
0335110075	Manguito hembra encolar ISO 1452	3
0442211075	Junta tórica enlace EPDM	4
0338114075	Base enlace Ø75	6
0338112075	Base enlace rosca hembra 2½"	8

Ø 90 - 3"

CODIGO	DENOMINACIÓN	FIG.
0336110091	Tuerca enlace Ø4"G	1
0335210090	Manguito rosca macho	2
0335110090	Manguito hembra encolar ISO 1452	3
0440330090	Junta tórica enlace EPDM	4
0338114090	Base enlace Ø90	6
0338112090	Base enlace rosca hembra 3"	8



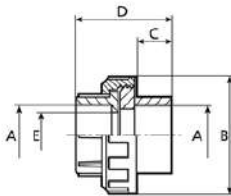
ENLACES 3 PIEZAS EN PVC-U
PVC-U UNIONS
RACCORDS UNION 3 PIÈCES EN PVC-U

• Juntas tóricas de EPDM

• EPDM O-Rings

• Joints toriques de EPDM

Hembra encolar
Female socket
Femelle à coller



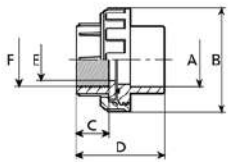
DN	A	B	C	D	E	Kg.
10	16	49	14	47	13	0,055
15	20	49	16	47	15	0,050
20	25	57	19	51	20	0,071
25	32	67	21	60	25	0,111
32	40	81	26	65	27	0,175
40	50	99	31	82	40	0,288
50	63	112	38	90	50	0,409
65	75	154	44	122	71	0,950
80	90	154	47	130	80	1,007
* 100	110	178	61	142	100	1,185



CODIGO	TUBO Ø	Und/c Pcs/Box
7401016	16	100 P
7401020	20	100 P
7401025	25	100 Q
7401032	32	100 R
7401040	40	100 S
7401050	50	72 H
7401063	63	60 T
7401075	75	12 U
7401090	90	12 U
* 7401110	110	12 I

* PN-10

Hembra encolar y roscar
Female socket and thread
Femelle à coller et taraudé

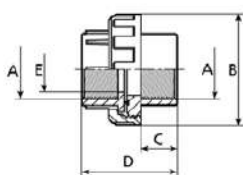


DN	A	B	C	D	E	F	Kg.
10	16	49	17	47	13	3/8"	0,056
15	20	49	17	47	15	1/2"	0,053
20	25	57	19	51	20	3/4"	0,071
25	32	67	22	60	25	1"	0,108
32	40	81	32	65	27	1 1/4"	0,167
40	50	99	32	82	40	1 1/2"	0,299
50	63	112	35	90	50	2"	0,435
65	75	154	43	122	71	2 1/2"	0,950
80	90	154	47	130	80	3"	1,033
100	110	178	61	142	100	4"	1,357



CODIGO	TUBO Ø	Und/c Pcs/Box
7403016	16-3/8"	100 P
7403020	20-1/2"	100 P
7403025	25-3/4"	100 Q
7403032	32-1"	100 R
7403040	40-1 1/4"	100 S
7403050	50-1 1/2"	72 H
7403063	63-2"	60 T
7403075	75-2 1/2"	12 U
7403090	90-3"	12 U
7403110	110-4"	12 I

Rosca hembra
Female threaded
Taraudé femelle



DN	A	B	C	D	E	Kg.
10	3/8"	49	17	47	13	0,054
15	1/2"	49	17	47	15	0,050
20	3/4"	57	19	51	20	0,071
25	1"	67	22	60	25	0,111
32	1 1/4"	81	32	65	27	0,167
40	1 1/2"	99	32	82	40	0,309
50	2"	112	35	90	50	0,448
65	2 1/2"	154	43	122	71	0,952
80	3"	154	47	130	80	1,028
100	4"	178	61	142	100	1,375



CODIGO	TUBO Ø	Und/c Pcs/Box
7402016	3/8"	100 P
7402020	1/2"	100 P
7402025	3/4"	100 Q
7402032	1"	100 R
7402040	1 1/4"	100 S
7402050	1 1/2"	72 H
7402063	2"	60 T
7402075	2 1/2"	12 U
7402090	3"	12 U
7402110	4"	12 I



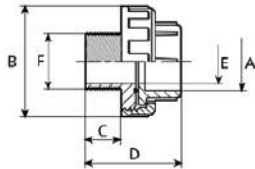
ENLACES 3 PIEZAS EN PVC-U
PVC-U UNIONS
RACCORDS UNION 3 PIÈCES EN PVC-U

• Juntas tóricas de EPDM

• EPDM O-Rings

• Joints toriques de EPDM

Hembra encolar y rosca macho
Female socket and male thread
Femelle à coller et taraudé mâle

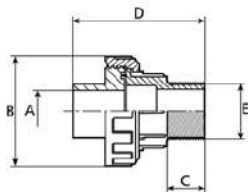


DN	A	B	C	D	E	F	Kg.
40	50	95	30	99	40	1 1/2"	0,280
50	63	110	30	112	50	2"	0,417



CODIGO	TUBO Ø	Und./c Pcs/Box
7406050	50-1 1/2"	72 H
7406063	63-2"	60 T

Hembra encolar y rosca macho reducido
Female socket and male threaded reduced
Femelle à coller et taraudé mâle réduit

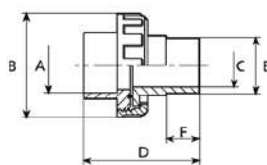


DN	A	B	C	D	E	Kg.
32	40	81	25	105	1 1/2"	0,230
40	50	99	25	119	2"	0,352



CODIGO	TUBO Ø	Und./c Pcs/Box
7407050	40-1 1/2"	45 D
7407063	50-2"	60 H

Hembra encolar y soldar a testa (PEHD)
Female socket and over head welding (HDPE)
Femelle à coller et soudage en tête (PEHD)



DN	A	B	C	D	E	F	Kg.
15	20	49	16	64	20	16	0,044
20	25	57	19	75	25	20	0,064
25	32	67	25	83	32	22	0,102
32	40	81	31	90	40	27	0,166
40	50	99	39	105	50	31	0,280
50	63	112	49	121	63	38	0,386
65	75	154	63	152	75	43	0,914
80	90	178	79	169	90	51	0,950
80	110	178	79	161	90	51	1,206
100	110	178	90	169	110	60	1,281



CODIGO	TUBO Ø
7409020	20
7409025	25
7409032	32
7409040	40
7409050	50
7409063	63
7409075	75
7409090	90
7409091	110-90
7409110	110



ACCESORIOS ELECTROSOLDABLES DE POLIETILENO
POLYETHYLENE ELECTROFUSION FITTINGS
RACCORDS ELECTROSOUDABLES EN POLYÉTHYLÈNE

MANGUITO
COUPLING
MANCHON



MANGUITOS PE100 - Black Gas 10 Bar Water PN16

CODIGO	Ø TUBO	Und/c Pcs/Box
8300020	20 mm	20
8300025	25 mm	20
8300032	32 mm	20
8300040	40 mm	50
8300050	50 mm	40
8300063	63 mm	20
8300075	75 mm	25
8300090	90 mm	25
8300110	110 mm	20
8300125	125 mm	10
8300140	140 mm	6
8300160	160 mm	4
8300180	180 mm	4
8300200	200 mm	2
8300225	225 mm	2
8300250	250 mm	2
8300280	280 mm (40 V)	1
8300315	315 mm (40 V)	1
8300355	355 mm (40 V)	1
* 8300400	400 mm (40 V)	1

* Bajo pedido

CODO 90°
90° ELBOW
COUDE 90°



CODO 90° PE100 - Black Gas 10 Bar Water PN16

CODIGO	Ø TUBO	Und/c Pcs/Box
8304020	20 mm	25
8304025	25 mm	25
8304032	32 mm	25
8304040	40 mm	40
8304050	50 mm	40
8304063	63 mm	10
8304075	75 mm	33
8304090	90 mm	10
8304110	110 mm	5
8304125	125 mm	5
8304160	160 mm	1
8304180	180 mm	1

CODO 45°
45° ELBOW
COUDE 45°



CODO 45° PE100 - Black Gas 10 Bar Water PN16

CODIGO	Ø TUBO	Und/c Pcs/Box
8305032	32 mm	20
8305040	40 mm	50
8305050	50 mm	40
8305063	63 mm	20
8305075	75 mm	25
8305090	90 mm	25
8305110	110 mm	20
8305125	125 mm	10
8305160	160 mm	4
8305180	180 mm	4

TAPÓN
CAP
BOUCHON



TAPÓN PE100 - Black Gas 10 Bar Water PN16

CODIGO	Ø TUBO	Und/c Pcs/Box
8306020	20 mm	20
8306025	25 mm	20
8306032	32 mm	20
8306040	40 mm	50
8306050	50 mm	40
8306063	63 mm	20
8306075	75 mm	25
8306090	90 mm	25
8306110	110 mm	20
8306125	125 mm	10
8306140	140 mm	6
8306160	160 mm	4
8306180	180 mm	4
8306200	200 mm	2
8306225	225 mm	2
8306250	250 mm	2



ACCESORIOS ELECTROSOLDABLES DE POLIETILENO
POLYETHYLENE ELECTROFUSION FITTINGS
RACCORDS ELECTROSOUABLES EN POLYÉTHYLÈNE

TE IGUAL
EQUAL TEE
TE EGAL



TE IGUAL PE100 - Black Gas 10 Bar Water PN16

CODIGO	Ø TUBO	Und/c Pcs/Box
8302020	20x20x20 mm	50
8302025	25x25x25 mm	50
8302032	32x32x32 mm	50
8302040	40x40x40 mm	25
8302050	50x50x50 mm	25
8302063	63x63x63 mm	20
8302075	75x75x75 mm	10
8302090	90x90x90 mm	5
8302110	110x110x110 mm	4
8302125	125x125x125 mm	4
8302160	160x160x160 mm	1
8302180	180x180x180 mm	1

REDUCCIÓN
REDUCER
REDUCTION



MANGUITO REDUCIDO PE100 - Black Gas 10 Bar Water PN16

CODIGO	Ø TUBO	Und/c Pcs/Box
8307220	25x20 mm	25 / 75
8307320	32x20 mm	20 / 75
8307325	32x25 mm	20 / 75
8307432	40x32 mm	50
8307532	50x32 mm	40
8307540	50x40 mm	40
8307632	63x32 mm	30
8307640	63x40 mm	30
8307650	63x50 mm	30
8307963	90x63 mm	20
8307163	110x63 mm	20
8307190	110x90 mm	10
8307290	125x90 mm	10
8307180	180x125 mm	

MANGUITO BRIDA
STUB FLANGED COUPLING
COLLET BRIDE



MANGUITOS BRIDA PE100 SDR 11

CODIGO	Ø TUBO	Und/c Pcs/Box
8371032	32 mm	40
8371040	40 mm	40
8371050	50 mm	20
8371063	63 mm	38
8371075	75 mm	32
8371090	90 mm	16
8371110	110 mm	12
8371125	125 mm	10
8371140	140 mm	12
8371160	160 mm	12
8371180	180 mm	9
8371200	200 mm	1
8371225	225 mm	1
8371250	250 mm	1
8371280	280 mm	1
8371315	315 mm	1
8371355	355 mm	1
8371400	400 mm	1

BAJO PEDIDO - UNDER CONFIRMATION - SUR DEMANDE

MAQUINAS MANUALES Y AUTOMÁTICAS SOLDADURA A TOPE 63 - 630 MM.
BUTT FUSION MACHINES - MANUAL AND AUTOMATIC 63 - 630 MM.
MACHINES SOUDURE BOUT A BOUT - MANUAL ET AUTOMATIQUE 63 - 630 MM.

MAQUINAS AUTOMÁTICAS Y MANUALES DE ELECTROFUSIÓN HASTA 1200 MM.
BUTT FUSION MACHINES - AUTOMATIC AND MANUAL ELECTROFUSION MACHINES UP TO 1200 MM.
MACHINES D'ELECTROFUSION AUTOMATIQUES ET MANUELLES JUSQU'À 1200 MM.

EQUIPAMIENTO AUXILIAR (HERRAMIENTAS)
ANCILLARY EQUIPMENT (TOOLS)
EQUIPEMENT AUXILIARE (OUTILLAGE)