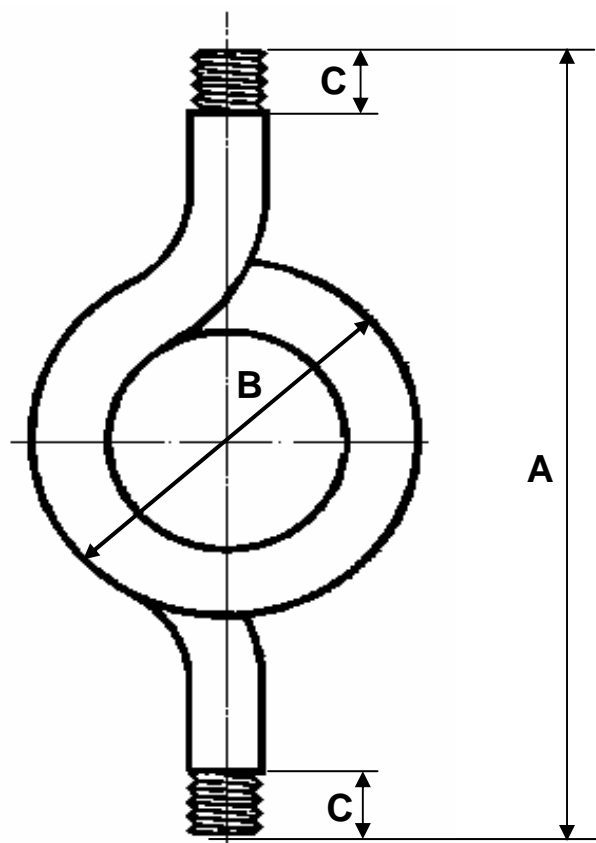


TUBO SIFÓN "Recto" Fig. 527 en PN-32/40



MATERIAL	ACERO CARBONO						ACERO INOXIDABLE					
DIN	1.0308-ST-35						1.4307 Aisi-304L					
ROSCA BSP	1/2" M			1/4" M			1/2" M			1/4" M		
PN	32			32			40			40		
PRESIÓN BAR	32	25	20	32	25	20	40	32	25	40	32	25
TEMP. MÁX °C	150	250	350	150	250	350	150	300	400	150	300	400
TEMP. MIN. °C	-15			-15			-50			-50		
A	275			200			275			200		
B	125			85			125			85		
C	16			15			15			15		
Ø INTERIOR	16			8,6			17			9		
Ø EXTERIOR	21,2			13,2			21,3			13,7		
ACABADO	COLOR PLATA RAL-9006						ELECTROPULIDO BRILLANTE					