



TELF: 93 699 46 04

MAIL: administracion@rado2000.com

Catálogo de:

ACCESORIOS PARA BARANDILLAS

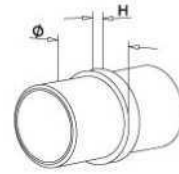
ÍNDICE

UNIONES DE TUBOS	3
BASES PARA TUBOS	5
SOPORTES PARA TUBOS	8
SOPORTES PARA VARILLAS	13
TERMINALES PARA TUBOS	14
PINZAS PARA VIDRIO	15
PASAMANOS ENSAMBLADOS	18
TUBO Y VARILLA	18
NOTAS IMPORTANTES	19

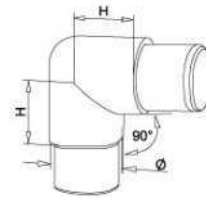
UNIONES DE TUBOS



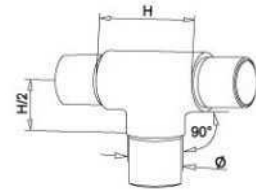
		Ø (mm)	H (mm)
U01.043.A4	UNION TUBOS D43 AISI 316	Ø 43	4
U01.051.A4	UNION TUBOS D51 AISI 316	Ø 50,8	3



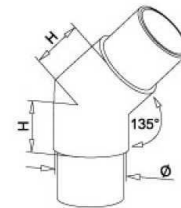
		Ø (mm)	H (mm)
U02.043.A4	UNION ANGULO RECTO D43 AISI 316	Ø 43	35
U02.051.A4	UNION ANGULO RECTO D51 AISI 316	Ø 50,8	32



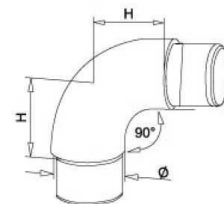
		Ø (mm)	H (mm)
U03.043.A4	UNION "T" D43 AISI 316	Ø 43	71
U03.051.A4	UNION "T" D51 AISI 316	Ø 50,8	67



		Ø (mm)	H (mm)
U05.043.A4	UNION ANGULAR 135° D43 AISI 316	Ø 43	42
U05.051.A4	UNION ANGULAR 135° D51 AISI 316	Ø 50,8	45

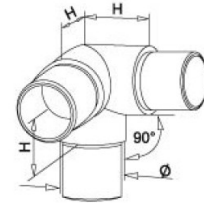


		Ø (mm)	H (mm)
U06.043.A4	UNION CURVA D43 AISI 316	Ø 43	43,5
U06.043.A2	UNION CURVA D43 AISI 304	Ø 43	43,5
U06.051.A4	UNION CURVA D51 AISI 316	Ø 50,8	41





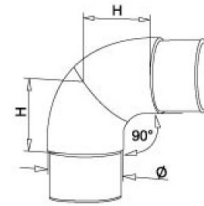
		\varnothing (mm)	H (mm)
U07.043.A4	UNION "T" A 90° D43 AISI 316	\varnothing 43	35
U07.051.A4	UNION "T" A 90° D51 AISI 316	\varnothing 50,8	32



		\varnothing (mm)
U08.043.A4	UNION Y APOYO D43 AISI 316	\varnothing 43
U08.051.A4	UNION Y APOYO D51 AISI 316	\varnothing 50,8

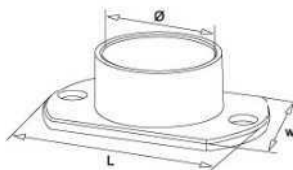


		\varnothing (mm)	H (mm)
U11.043.A4	UNION VARIABLE D43 AISI 316	\varnothing 43	47
U11.051.A4	UNION VARIABLE D51 AISI 316	\varnothing 50,8	50

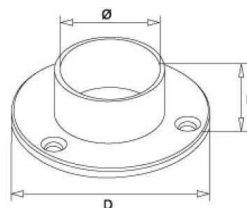


		\varnothing (mm)
U14.043.A4	UNION ROTULA D43 AISI 316	\varnothing 43

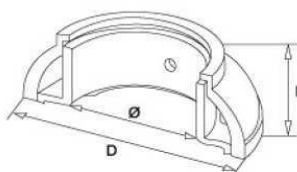
BASES PARA TUBOS



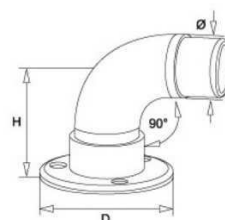
		Ø (mm)	L (mm)	W (mm)
B01.043.A4	BASE ESTRECHA D43 AISI 316	Ø 43	85	25
B01.051.A4	BASE ESTRECHA D51 AISI 316	Ø 50,8	102	31



		Ø (mm)	D (mm)	H (mm)
B02.043.A4	BASE REDONDA D43 AISI 316	Ø 43	80	25
B02.043.A2	BASE REDONDA D43 AISI 304	Ø 43	80	25
B02.051.A4	BASE REDONDA D51 AISI 316	Ø 50,8	102	31



		Ø (mm)	D (mm)	H (mm)
B11.043.A4	BASE CON TAPA D43 AISI 316	Ø 43	82	28
B11.051.A4	BASE CON TAPA D51 AISI 316	Ø 50,8	85	30



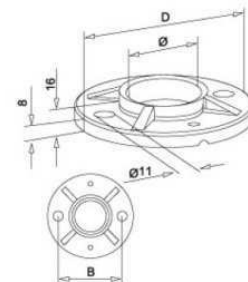
		Ø (mm)	D (mm)	H (mm)
B14.043.A4	BASE CURVA D43 AISI 316	Ø 43	80	68
B14.051.A4	BASE CURVA D51 AISI 316	Ø 50,8	102	70
¡ATENCIÓN! REFERENCIAS MODIFICADAS (ANTES B41)				

NOVEDAD

		Tubo (mm)	□ (mm)
B25.4040.A4	BASE SIMPLE CUADRADA 40X40 AISI 316	40x40x1,5	100x100
Para utilizar con la tapa base simple Ref B27			



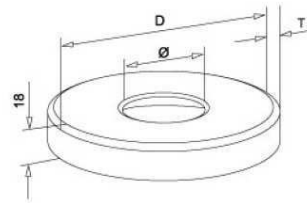
		Tubo (mm)	□ (mm)
B27.4040.A4	TAPA BASE SIMPLE CUADRADA 40X40 AISI 316	40x40	101x101
Para utilizar con la base cuadrada Ref B25			



		Ø (mm)	D (mm)	B (mm)
B51.043.A4	BASE PARA POSTE D43 AISI 316	Ø 43	120	90



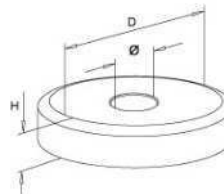
		Ø (mm)	D (mm)
B53.043.A4	BASE SIMPLE D43 PARA POSTE AISI 316	Ø 43	100
B53.051.A4	BASE SIMPLE D51 PARA POSTE AISI 316	Ø 50,8	100
Para utilizar con la tapa base simple Ref B63			



		Ø (mm)	D (mm)
B61.043.A4	TAPA BASE PARA POSTE D43 AISI 316	Ø 43	125

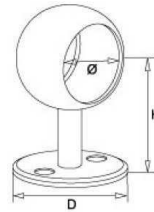


		Ø (mm)	D (mm)
B63.043.A4	TAPA BASE SIMPLE D43 PARA POSTE AISI 316	Ø 43	101
B63.051.A4	TAPA BASE SIMPLE D51 PARA POSTE AISI 316	Ø 50,8	101
Acopla y se fija con la base simple Ref B53			

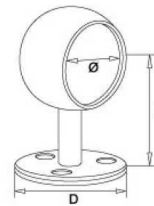


		Ø (mm)	D (mm)	H (mm)
B91.012.A4	EMBELLECEDOR PARA VARILLA 12MM AISI 316	Ø 12	70	13

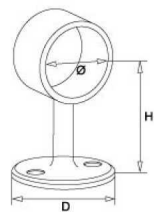
SOPORTES PARA TUBOS



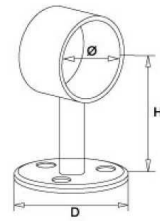
		Ø (mm)	H (mm)	D (mm)
S01.043.A4	SOPORTE OVALADO PASANTE D43 AISI 316	Ø 43	70	69



		Ø (mm)	H (mm)	D (mm)
S02.043.A4	SOPORTE OVALADO CIEGO D43 AISI 316	Ø 43	70	69



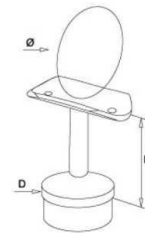
		Ø (mm)	H (mm)	D (mm)
S03.043.A4	SOPORTE PASANTE D43 AISI 316	Ø 43	70	69
S03.051.A4	SOPORTE PASANTE D51 AISI 316	Ø 50,8	83	63



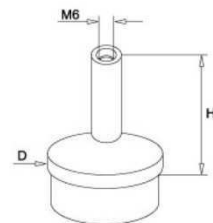
		Ø (mm)	H (mm)	D (mm)
S04.043.A4	SOPORTE PASANTE D43 CIEGO AISI 316	Ø 43	70	69



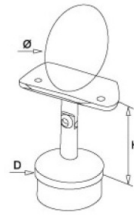
		Ø (mm)	H (mm)	D (mm)
S11.043.A4	SOPORTE BASE TUBO D43 AISI 316	Ø 43	58	63
S11.051.A4	SOPORTE BASE TUBO D51 AISI 316	Ø 50,8	58	63



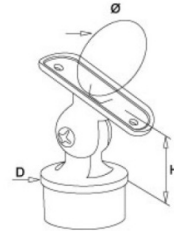
		Ø (mm)	D (mm)	H (mm)
S12.043.A4	SOPORTE TUBOS D43/D43 AISI 316	Ø 43	43	55
S12.051.A4	SOPORTE TUBOS D51/D51 AISI 316	Ø 50,8	50,8	74



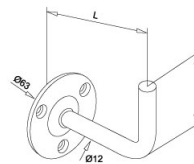
		Ø (mm)	H (mm)	D (mm)
S13.043.A4	SOPORTE RECTO ATORNILLAR D43 M6 AISI 316	Ø 43	58	63
S13.051.A4	SOPORTE RECTO ATORNILLAR D51 M6 AISI 316	Ø 50,8	58	63



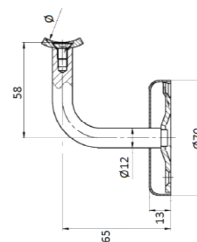
		Ø (mm)	D (mm)	H (mm)
S15.043.A4	SOPORTE VARIABLE D43/D43 AISI 316	Ø 43	Ø 43	55
S15.051.A4	SOPORTE VARIABLE D51/D51 AISI 316	Ø 50,8	Ø 50,8	55



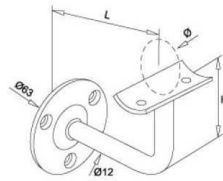
		Ø (mm)	D (mm)	H (mm)
S17.043.A4	SOPORTE ROTULA D43/D43 AISI 316	Ø 43	Ø 43	43
S17.051.A4	SOPORTE ROTULA D51/D51 AISI 316	Ø 50,8	Ø 50,8	51



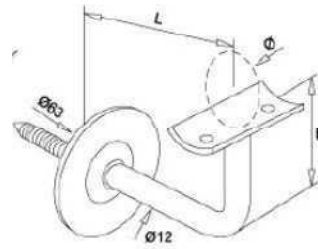
		H (mm)	L (mm)
S31.001.A4	SOPORTE TUBO 90º PARA SOLDAR AISI 316	58	85
S31.001.A2	SOPORTE TUBO 90º PARA SOLDAR AISI 304	58	85
S31.100.A4	SOPORTE TUBO 90º PLANO AISI 316	58	85
¡ATENCIÓN! REFERENCIAS MODIFICADAS			



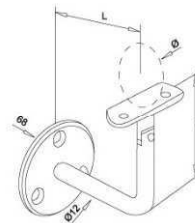
		Ø (mm)	H (mm)	L (mm)
S33.043.A4	SOPORTE TUBO 90º D43 CON EMBELLECEDOR	Ø 43	58	65
S33.051.A4	SOPORTE TUBO 90º D51 CON EMBELLECEDOR	Ø 50,8	58	65
S33.001.A4	SOPORTE TUBO 90º SOLDAR C/ EMBELLECEDOR	-	58	65



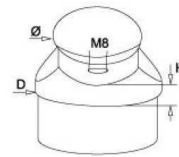
		Ø (mm)	H (mm)	L (mm)
S34.043.A4	SOPORTE TUBO 90° D43 AISI 316	Ø 43	70	60
S34.051.A4	SOPORTE TUBO 90° D51 AISI 316	Ø 50,8	70	60



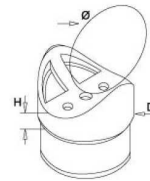
		Ø (mm)	H (mm)	L (mm)
S35.043.A4	SOPORTE TUBO 90° D43 CIEGO AISI 316	Ø 43	58	85
S35.051.A4	SOPORTE TUBO 90° D51 CIEGO AISI 316	Ø 50,8	58	85
S35.100.A4	SOPORTE TUBO 90° PLANO CIEGO AISI 316	Plano	58	85
S35.001.A4	SOPORTE TUBO 90° SOLDAR CIEGO AISI 316	-	58	85



		Ø (mm)	H (mm)	L (mm)
S37.043.A4	SOPORTE TUBO 90° VARIABLE D43 AISI 316	Ø 43	74	75
S37.051.A4	SOPORTE TUBO 90° VARIABLE D51 AISI 316	Ø 50,8	74	75

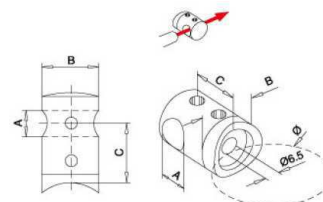


		Ø (mm)	D (mm)	H (mm)
S51.043.A4	SOPORTE TUBO SIMPLE D43 M8 AISI 316	Ø 43	43	5,4
S51.051.A4	SOPORTE TUBO SIMPLE D51 M8 AISI 316	Ø 50,8	50,8	8

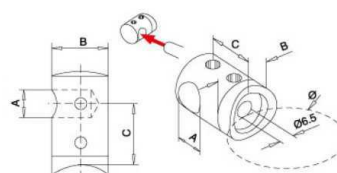


		Ø (mm)	D (mm)	H (mm)
S52.043.A4	SOPORTE TUBO ENCAJE D43/D43 AISI 316	Ø 43	43	11
S52.051.A4	SOPORTE TUBO ENCAJE D51/D51 AISI 316	Ø 50,8	50,8	16,5

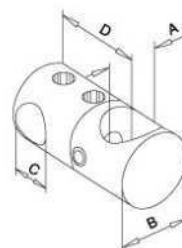
SOPORTES PARA VARILLAS/TUBOS



		Ø (mm)	A (mm)	B (mm)	C (mm)
R01.1243.A4	SOPORTE D43 VARILLA 12 PASANTE AISI 316	Ø 43	Ø 12	Ø 22	20
R01.1251.A4	SOPORTE D51 VARILLA 12 PASANTE AISI 316	Ø 50,8	Ø 12	Ø 22	20
R01.1200.A4	SOP. PLANO VARILLA 12 PASANTE. AISI 316	Plano	Ø 12	Ø 22	20
Disponible también para varilla diámetros D10, D14, D16 y en AISI 304 bajo pedido					

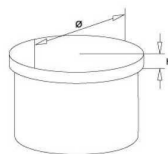


		Ø (mm)	A (mm)	B (mm)	C (mm)
R11.1243.A4	SOP. D43 VARILLA 12 CIEGA DCHA AISI 316	Ø 43	Ø 12	Ø 22	20
R11.1251.A4	SOP. D51 VARILLA 12 CIEGA DCHA AISI 316	Ø 50,8	Ø 12	Ø 22	20
R11.1200.A4	SOP. PLANO VARILLA 12 CIEGA DCHA AISI 316	Plano	Ø 12	Ø 22	20
Disponible también para varilla diámetros D10, D14, D16 y en AISI 304 bajo pedido					

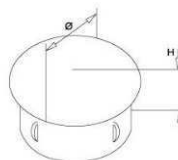


		A (mm)	C (mm)	B (mm)	D (mm)
R21.1212.A4	SOP. VARILLA/VARILLA 12/12 MM AISI 316	Ø 12	Ø 12	Ø 22	28
Disponible también para varilla diámetros D14 y en AISI 304 bajo pedido					

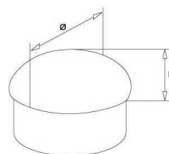
TERMINALES PARA TUBOS



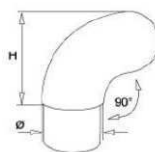
		Ø (mm)	H (mm)
T01.012.A4	TERMINAL PLANO D12 AISI 316	Ø 12	2,0
T01.040.A4	TERMINAL PLANO D40 AISI 316	Ø 40	3,0
T01.043.A4	TERMINAL PLANO D43 AISI 316	Ø 43	3,5
T01.043.A2	TERMINAL PLANO D43 AISI 304	Ø 43	3,5
T01.051.A4	TERMINAL PLANO D51 AISI 316	Ø 50,8	4



		Ø (mm)	H (mm)
T05.043.A4	TERMINAL LIGERO A PRESIÓN D43 AISI 316	Ø 43	6
T05.051.A4	TERMINAL LIGERO A PRESIÓN D51 AISI 316	Ø 50,8	8



		Ø (mm)	H (mm)
T11.043.A4	TERMINAL CUPULA D43 AISI 316	Ø 43	9,5
T11.051.A4	TERMINAL CUPULA D51 AISI 316	Ø 50,8	12

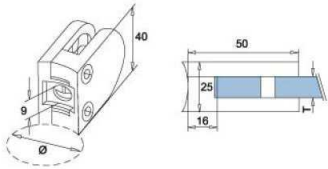




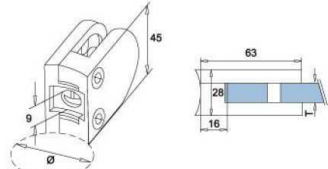

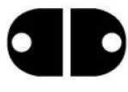
		Ø (mm)	H (mm)
T21.043.A4	TERMINAL CURVA D43 AISI 316	Ø 43	62
T21.051.A4	TERMINAL CURVA D51 AISI 316	Ø 50,8	70

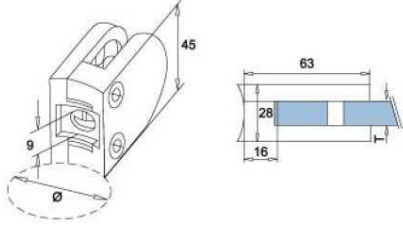




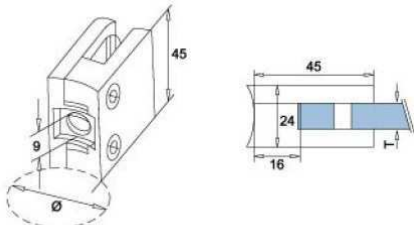


		(mm)
T61.4040.A4	TERMINAL CUADRADO 40X40 INOX 316	40x40
T61.4020.A4	TERMINAL RECTANGULAR 40X20 INOX 316	40X20

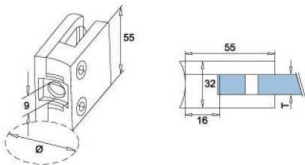


PINZAS PARA VIDRIO

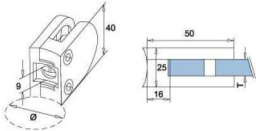


PINZA "D" 40X50 - VIDRIO 6-8-10			
			
P4050.043.A4	PINZA "D" 40X50 D43 VIDRIO 6-8-10 AISI 316	Ø 43	40X50x25
P4050.051.A4	PINZA "D" 40X50 D51 VIDRIO 6-8-10 AISI 316	Ø 50,8	40X50x25
P4050.100.A4	PINZA "D" 40X50 PLANA VIDRIO 6-8-10 AISI 316	Plana	40X50x25
		PARA VIDRIO	
D06.SM.RG	GOMA PINZA "D" 40X50 VIDRIO 6 MM	6 mm	
D08.SM.RG	GOMA PINZA "D" 40X50 VIDRIO 8 MM	8 mm	
D10.SM.RG	GOMA PINZA "D" 40X50 VIDRIO 10 MM	10 mm	

PINZA "D" 45X63 - VIDRIO 8-10-12			
			
P4563.043.A4	PINZA "D" 45X63 D43 VIDRIO 8-10-12 AISI 316	Ø 43	45X63X28
P4563.051.A4	PINZA "D" 45X63 D51 VIDRIO 8-10-12 AISI 316	Ø 50,8	45X63X28
P4563.100.A4	PINZA "D" 45X63 PLANA VIDRIO 8-10-12 AISI 316	Plana	45X63X28
		PARA VIDRIO	
D08.MD.RG	GOMA PINZA "D" 45X63 VIDRIO 8 MM	8 mm	
D10.MD.RG	GOMA PINZA "D" 45X63 VIDRIO 10 MM	10 mm	
D12.MD.RG	GOMA PINZA "D" 45X63 VIDRIO 12 MM	12 mm	

PINZA "D" 45X63 SEGURIDAD - VIDRIO 8-10-12			
			
PSEG.051.A4	PINZA "D" 45X63 D51 SEGURIDAD V. 8-10-12 AISI 316	Ø 50,8	45X63X28
		PARA VIDRIO	
D08.MD.RG	GOMA PINZA "D" 45X63 VIDRIO 8 MM	8 mm	
D10.MD.RG	GOMA PINZA "D" 45X63 VIDRIO 10 MM	10 mm	
D12.MD.RG	GOMA PINZA "D" 45X63 VIDRIO 12 MM	12 mm	

PINZA CUADRADA 45X45 VIDRIO 6-8-10			
			
P245.043.A4	PINZA CUADRADA 45X45 D43 V. 6-8-10 AISI 316	Ø 43	45X45x24
P245.051.A4	PINZA CUADRADA 45X45 D51 V. 6-8-10 AISI 316	Ø 50,8	45X45x24
P245.100.A4	PINZA CUADRADA 45X45 PLANA V. 6-8-10 AISI 316	Plana	45X45x24
		PARA VIDRIO	
Q06.SM.RG	GOMA PINZA CUADRADA 45X45 VIDRIO 6 MM	6 mm	
Q08.SM.RG	GOMA PINZA CUADRADA 45X45 VIDRIO 8 MM	8 mm	
Q10.SM.RG	GOMA PINZA CUADRADA 45X45 VIDRIO 10 MM	10 mm	

PINZA CUADRADA 55X55 VIDRIO 8-10-12			
			
P255.043.A4	PINZA CUADRADA 55X55 D43 V. 8-10-12 AISI 316	Ø 43	55X55X32
P255.051.A4	PINZA CUADRADA 55X55 D51 V. 8-10-12 AISI 316	Ø 50,8	55X55X32
P255.100.A4	PINZA CUADRADA 55X55 PLANA V. 8-10-12 AISI 316	Plana	55X55X32
		PARA VIDRIO	
Q08.MD.RG	GOMA PINZA CUADRADA 55X55 VIDRIO 8 MM	8 mm	
Q10.MD.RG	GOMA PINZA CUADRADA 55X55 VIDRIO 10 MM	10 mm	
Q12.MD.RG	GOMA PINZA CUADRADA 55X55 VIDRIO 12 MM	12 mm	

PINZA "D" PEQUEÑA VIDRIO 6-8-10 ZAMAK SATIN			
			
P4050.043.ZKS	PINZA "D" 40X50 D43 V. 6-8-10 ZAMAK SATIN	Ø 43	40X50x25
P4050.100.ZKS	PINZA "D" 40X50 PLANA V. 6-8-10 ZAMAK SATIN	Plana	40X50x25
		PARA VIDRIO	
D06.ZK.RG	GOMA PINZA "D" 40X50 ZAMAK VIDRIO 6 MM	6 mm	
D08.ZK.RG	GOMA PINZA "D" 40X50 ZAMAK VIDRIO 8 MM	8 mm	
D10.ZK.RG	GOMA PINZA "D" 40X50 ZAMAK VIDRIO 10 MM	10 mm	

PASAMANOS ENSAMBLADOS



	PAS.43.05	PASAMANOS D43 X 500 MM 2 SOPORTES AISI 316
	PAS.43.10	PASAMANOS D43 X 1000 MM 2 SOPORTES AISI 316
	PAS.51.10	PASAMANOS D51 X 1000 MM 2 SOPORTES AISI 316
	PAS.43.15	PASAMANOS D43 X 1500 MM 2 SOPORTES AISI 316
	PAS.51.15	PASAMANOS D51 X 1500 MM 2 SOPORTES AISI 316
	PAS.43.20	PASAMANOS D43 X 2000 MM 2 SOPORTES AISI 316
	PAS.51.20	PASAMANOS D51 X 2000 MM 2 SOPORTES AISI 316
	PAS.43.25	PASAMANOS D43 X 2500 MM 3 SOPORTES AISI 316
	PAS.51.25	PASAMANOS D51 X 2500 MM 3 SOPORTES AISI 316
	PAS.43.30	PASAMANOS D43 X 3000 MM 3 SOPORTES AISI 316
	PAS.51.30	PASAMANOS D51 X 3000 MM 3 SOPORTES AISI 316
OTRAS MEDIDAS BAJO PEDIDO		

TUBOS Y VARILLA

	TB.043.10	TUBO INOX 316 D43 X 1,5 MM	Ø 43	1000 mm
	TB.051.10	TUBO INOX 316 D51 X 1,5 MM	Ø 50,8	1000 mm
	VR.012.10	VARILLA INOX 316 D12 MM	Ø 12	1000 mm
	TB.043.12	TUBO INOX 316 D43 X 1,5 MM	Ø 43	1200 mm
	TB.051.12	TUBO INOX 316 D51 X 1,5 MM	Ø 50,8	1200 mm
	VR.012.12	VARILLA INOX 316 D12 MM	Ø 12	1200 mm
	TB.043.15	TUBO INOX 316 D43 X 1,5 MM	Ø 43	1500 mm
	TB.051.15	TUBO INOX 316 D51 X 1,5 MM	Ø 50,8	1500 mm
	VR.012.15	VARILLA INOX 316 D12 MM	Ø 12	1500 mm
	TB.043.20	TUBO INOX 316 D43 X 1,5 MM	Ø 43	2000 mm
	TB.051.20	TUBO INOX 316 D51 X 1,5 MM	Ø 50,8	2000 mm
	VR.012.20	VARILLA INOX 316 D12 MM	Ø 12	2000 mm
	TB.043.30	TUBO INOX 316 D43 X 1,5 MM	Ø 43	3000 mm
	TB.051.30	TUBO INOX 316 D51 X 1,5 MM	Ø 50,8	3000 mm
	VR.012.30	VARILLA INOX 316 D12 MM	Ø 12	3000 mm
	TB.043.60	TUBO INOX 316 D43 X 1,5 MM	Ø 43	6000 mm
	TB.051.60	TUBO INOX 316 D51 X 1,5 MM	Ø 50,8	6000 mm
	VR.012.60	VARILLA INOX 316 D12 MM	Ø 12	6000 mm

NOTAS IMPORTANTES

- En el caso de que el artículo que necesite no esté en nuestro catálogo, consúltenos, disponemos de un amplísimo elenco de productos no incluidos pero disponibles bajo pedido. Contacte con nosotros para más información.
- Nuestro catálogo se amplía periódicamente, incorporando nuevos artículos, nuevas medidas en artículos existentes o nuevos materiales y acabados superficiales.

